



SZABO SCANDIC

Part of Europa Biosite

Produktinformation



Forschungsprodukte & Biochemikalien



Zellkultur & Verbrauchsmaterial



Diagnostik & molekulare Diagnostik



Laborgeräte & Service

Weitere Information auf den folgenden Seiten!
See the following pages for more information!



Lieferung & Zahlungsart

siehe unsere [Liefer- und Versandbedingungen](#)

Zuschläge

- Mindermengenzuschlag
- Trockeneiszuschlag
- Gefahrgutzuschlag
- Expressversand

SZABO-SCANDIC HandelsgmbH

Quellenstraße 110, A-1100 Wien

T. +43(0)1 489 3961-0

F. +43(0)1 489 3961-7

mail@szabo-scandic.com

www.szabo-scandic.com

[linkedin.com/company/szaboscandic](https://www.linkedin.com/company/szaboscandic) 

LDHC monoclonal antibody (M01), clone 2C8

Catalog # : H00003948-M01

規格 : [100 ug]

[List All](#)

Specification

Product Description: Mouse monoclonal antibody raised against a partial recombinant LDHC.

Immunogen: LDHC (NP_002292.1, 71 a.a. ~ 160 a.a) partial recombinant protein with GST tag. MW of the GST tag alone is 26 KDa.

Sequence: FFSTSKITSGKDYSVSANSRIVVTAGARQQEGETRLALVQRNVAIMKSIIP
AIVHYSPDCKILVSNPVDILTYIYWKISGLPVTRVIG

Host: Mouse

Reactivity: Human

Isotype: IgG2a Kappa

Quality Control Testing: Antibody Reactive Against Recombinant Protein.

Storage Buffer: In 1x PBS, pH 7.4

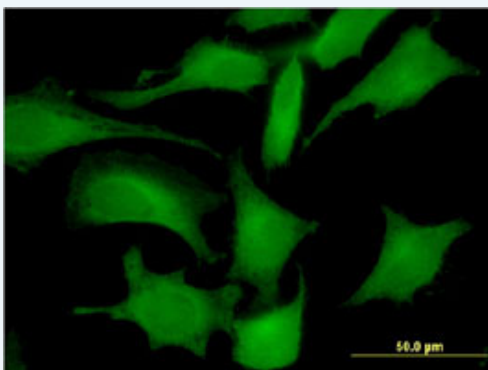
Storage Instruction: Store at -20°C or lower. Aliquot to avoid repeated freezing and thawing.

MSDS:  [Download](#)

Datasheet:  [Download](#)

Applications

Immunofluorescence



 [enlarge this image](#)

Immunofluorescence of monoclonal antibody to LDHC on HeLa cell . [antibody concentration 10 ug/ml]

 [Protocol Download](#)

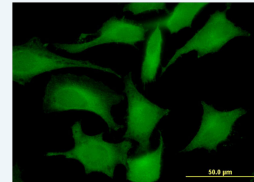
ELISA

Gene Information

Entrez GeneID: [3948](#)

Application Image

Immunofluorescence



 [enlarge](#)

ELISA

**GeneBank
Accession#:** [NM_002301](#)

**Protein
Accession#:** [NP_002292.1](#)

Gene Name: LDHC

Gene Alias: CT32,LDH3,LDHX,MGC111073

**Gene
Description:** lactate dehydrogenase C

Omim ID: [150150](#)

Gene Ontology: [Hyperlink](#)

Gene Summary: Lactate dehydrogenase C catalyzes the conversion of L-lactate and NAD to pyruvate and NADH in the final step of anaerobic glycolysis. LDHC is testis-specific and belongs to the lactate dehydrogenase family. Two transcript variants have been detected which differ in the 5' untranslated region. [provided by RefSeq]

**Other
Designations:** L-lactate dehydrogenase C,cancer/testis antigen 32

Gene Pathway

[Cysteine and methionine metabolism](#) [Glycolysis / Gluconeogenesis](#) [Metabolic pathways](#)
[Propanoate metabolism](#) [Pyruvate metabolism](#)

[服務條款](#) | [隱私權政策](#) | [著作及商標](#) | [網站地圖](#)

©2016 亞諾法生技股份有限公司 Abnova Corporation. 版權所有.