



SZABO SCANDIC

Part of Europa Biosite

Produktinformation



Forschungsprodukte & Biochemikalien



Zellkultur & Verbrauchsmaterial



Diagnostik & molekulare Diagnostik



Laborgeräte & Service

Weitere Information auf den folgenden Seiten!
See the following pages for more information!



Lieferung & Zahlungsart

siehe unsere [Liefer- und Versandbedingungen](#)

Zuschläge

- Mindermengenzuschlag
- Trockeneiszuschlag
- Gefahrgutzuschlag
- Expressversand

SZABO-SCANDIC HandelsgmbH

Quellenstraße 110, A-1100 Wien

T. +43(0)1 489 3961-0

F. +43(0)1 489 3961-7

mail@szabo-scandic.com

www.szabo-scandic.com

[linkedin.com/company/szaboscandic](https://www.linkedin.com/company/szaboscandic) 

LDHC (Human) IP-WB Antibody Pair

Catalog # : H00003948-PW2

規格 : [1 Set]

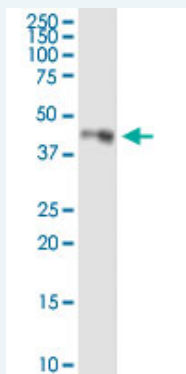
List All

Specification

Product Description: This IP-WB antibody pair set comes with one antibody for immunoprecipitation and another to detect the precipitated protein in western blot.

Reactivity: Human

Quality Control Testing: Immunoprecipitation-Western Blot (IP-WB)



Immunoprecipitation of LDHC transfected lysate using rabbit purified polyclonal anti-LDHC and Protein A Magnetic Bead ([U0007](#)), and immunoblotted with mouse purified polyclonal anti-LDHC.

Supplied Product: Antibody pair set content:
1. Antibody pair for IP: rabbit purified polyclonal anti-LDHC (300 ug)
2. Antibody pair for WB: mouse purified polyclonal anti-LDHC (50 ug)

Storage Instruction: Store reagents of the antibody pair set at -20°C or lower. Please aliquot to avoid repeated freeze thaw cycle. Reagents should be returned to -20°C storage immediately after use.

Applications

Immunoprecipitation-Western Blot

 [Protocol Download](#)

Gene Information

Entrez GeneID: [3948](#)

Gene Name: LDHC

Gene Alias: CT32,LDH3,LDHX,MGC111073

Gene Description: lactate dehydrogenase C

Omim ID: [150150](#)

Gene Ontology: [Hyperlink](#)

Gene Summary: Lactate dehydrogenase C catalyzes the conversion of L-lactate and

NAD to pyruvate and NADH in the final step of anaerobic glycolysis.
LDHC is testis-specific and belongs to the lactate dehydrogenase family. Two transcript variants have been detected which differ in the 5' untranslated region. [provided by RefSeq]

Other Designations: L-lactate dehydrogenase C,cancer/testis antigen 32

Gene Pathway

[Cysteine and methionine metabolism](#) [Glycolysis / Gluconeogenesis](#) [Metabolic pathways](#)
[Propanoate metabolism](#) [Pyruvate metabolism](#)

[服務條款](#) | [隱私權政策](#) | [著作及商標](#) | [網站地圖](#)

©2016 亞諾法生技股份有限公司 Abnova Corporation. 版權所有.