



SZABO SCANDIC

Part of Europa Biosite

Produktinformation



Forschungsprodukte & Biochemikalien



Zellkultur & Verbrauchsmaterial



Diagnostik & molekulare Diagnostik



Laborgeräte & Service

Weitere Information auf den folgenden Seiten!
See the following pages for more information!



Lieferung & Zahlungsart

siehe unsere [Liefer- und Versandbedingungen](#)

Zuschläge

- Mindermengenzuschlag
- Trockeneiszuschlag
- Gefahrgutzuschlag
- Expressversand

SZABO-SCANDIC HandelsgmbH

Quellenstraße 110, A-1100 Wien

T. +43(0)1 489 3961-0

F. +43(0)1 489 3961-7

mail@szabo-scandic.com

www.szabo-scandic.com

[linkedin.com/company/szaboscandic](https://www.linkedin.com/company/szaboscandic) 

LDHC 293T Cell Transient Overexpression Lysate(Denatured)

Catalog # : H00003948-T01

規格 : [100 uL]

[List All](#)

Specification

Transfected Cell Line: 293T

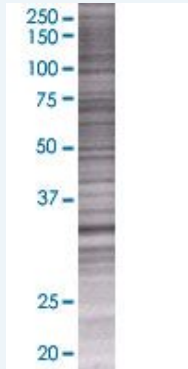
Plasmid: pCMV-LDHC full-length

Host: Human

Theoretical MW (kDa): 36.63

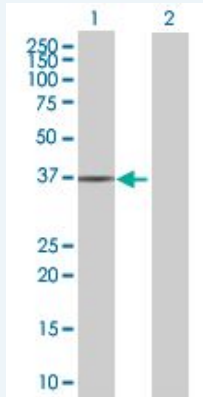
Quality Control Testing: Transient overexpression cell lysate was tested with Anti-LDHC antibody (H00003948-B01) by Western Blots.

SDS-PAGE Gel



LDHC transfected lysate.

Western Blot



Lane 1: LDHC transfected lysate (36.63 KDa)

Lane 2: Non-transfected lysate.

Storage Buffer: 1X Sample Buffer (50 mM Tris-HCl, 2% SDS, 10% glycerol, 300 mM 2-mercaptoethanol, 0.01% Bromophenol blue)

Storage Instruction: Store at -80°C. Aliquot to avoid repeated freezing and thawing.

MSDS:  [Download](#)

Applications

Application Image

Western Blot

Western Blot

Gene Information

Entrez GeneID: [3948](#)

GeneBank [NM_002301.2](#)
Accession#:

Protein [NP_002292.1](#)
Accession#:

Gene Name: LDHC

Gene Alias: CT32,LDH3,LDHX,MGC111073

Gene Description: lactate dehydrogenase C

Omim ID: [150150](#)

Gene Ontology: [Hyperlink](#)

Gene Summary: Lactate dehydrogenase C catalyzes the conversion of L-lactate and NAD to pyruvate and NADH in the final step of anaerobic glycolysis. LDHC is testis-specific and belongs to the lactate dehydrogenase family. Two transcript variants have been detected which differ in the 5' untranslated region. [provided by RefSeq]

Other Designations: L-lactate dehydrogenase C,cancer/testis antigen 32

Gene Pathway

[Cysteine and methionine metabolism](#) [Glycolysis / Gluconeogenesis](#) [Metabolic pathways](#)
[Propanoate metabolism](#) [Pyruvate metabolism](#)

[服務條款](#) | [隱私權政策](#) | [著作及商標](#) | [網站地圖](#)

©2016 亞諾法生技股份有限公司 Abnova Corporation. 版權所有.