



SZABO SCANDIC

Part of Europa Biosite

Produktinformation



Forschungsprodukte & Biochemikalien



Zellkultur & Verbrauchsmaterial



Diagnostik & molekulare Diagnostik



Laborgeräte & Service

Weitere Information auf den folgenden Seiten!
See the following pages for more information!



Lieferung & Zahlungsart

siehe unsere [Liefer- und Versandbedingungen](#)

Zuschläge

- Mindermengenzuschlag
- Trockeneiszuschlag
- Gefahrgutzuschlag
- Expressversand

SZABO-SCANDIC HandelsgmbH

Quellenstraße 110, A-1100 Wien

T. +43(0)1 489 3961-0

F. +43(0)1 489 3961-7

mail@szabo-scandic.com

www.szabo-scandic.com

[linkedin.com/company/szaboscandic](https://www.linkedin.com/company/szaboscandic) 

LDLR monoclonal antibody (M02), clone 5E6

Catalog # : H00003949-M02

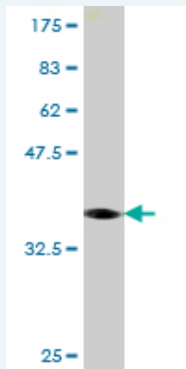
規格 : [100 ug]

[List All](#)

Specification

Product Description:	Mouse monoclonal antibody raised against a partial recombinant LDLR.
Immunogen:	LDLR (NP_000518, 105 a.a. ~ 205 a.a) partial recombinant protein with GST tag. MW of the GST tag alone is 26 KDa.
Sequence:	PPKTCSEQDEFRCRCHDGKICISRQFVCDSDRDCLDGSDEASCPVLTGCPAS FQCNSSTCIPQLWACDNDPDCEDGSDEWPQRCRGLYVFQGDSSPCSA FEFHCL
Host:	Mouse
Reactivity:	Human
Isotype:	IgG2a Kappa

Quality Control Testing: Antibody Reactive Against Recombinant Protein.



Western Blot detection against Immunogen (36.85 KDa) .

Storage Buffer: In 1x PBS, pH 7.4

Storage Instruction: Store at -20°C or lower. Aliquot to avoid repeated freezing and thawing.

MSDS: [Download](#)

Datasheet: [Download](#)

Applications

Western Blot (Recombinant protein)

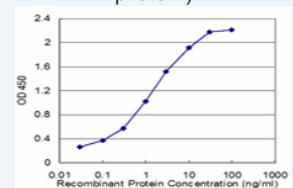
[Protocol Download](#)

Sandwich ELISA (Recombinant protein)

Application Image

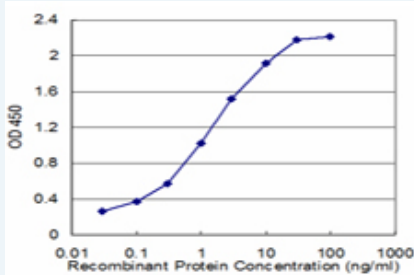
Western Blot (Recombinant protein)

Sandwich ELISA (Recombinant protein)



[enlarge](#)

ELISA



Detection limit for recombinant GST tagged LDLR is approximately 0.03ng/ml as a capture antibody.

 [Protocol Download](#)

ELISA

Gene Information

Entrez GeneID: [3949](#)

GeneBank [NM_000527](#)

Accession#:

Protein [NP_000518](#)

Accession#:

Gene Name: LDLR

Gene Alias: FH,FHC

Gene Description: low density lipoprotein receptor

Omim ID: [143890](#), [606945](#)

Gene Ontology: [Hyperlink](#)

Gene Summary: The low density lipoprotein receptor (LDLR) gene family consists of cell surface proteins involved in receptor-mediated endocytosis of specific ligands. Low density lipoprotein (LDL) is normally bound at the cell membrane and taken into the cell ending up in lysosomes where the protein is degraded and the cholesterol is made available for repression of microsomal enzyme 3-hydroxy-3-methylglutaryl coenzyme A (HMG CoA) reductase, the rate-limiting step in cholesterol synthesis. At the same time, a reciprocal stimulation of cholesterol ester synthesis takes place. Mutations in this gene cause the autosomal dominant disorder, familial hypercholesterolemia. [provided by RefSeq]

Other Designations: LDL receptor, low-density lipoprotein receptor class A domain-containing protein 3

Gene Pathway

[Endocytosis](#)

Related Disease

[Alzheimer Disease](#) [Alzheimer disease](#) [Amyotrophic Lateral Sclerosis](#)
[Amyotrophic lateral sclerosis](#) [Anemia, Sickle Cell Anemia, sickle cell](#) [Aortic Diseases](#)
[Arteriosclerosis](#) [Atherosclerosis](#) [Atherosclerosis](#) [Biliary Tract Neoplasms](#)
[Bone Diseases, Metabolic](#) [Brain Infarction](#) [Brain Ischemia](#) [Calcinosis](#)
[Cardiovascular Diseases](#) [Carotid Artery Diseases](#) [Cellulitis](#) [Cerebral Infarction](#)

... see more

