



SZABO SCANDIC

Part of Europa Biosite

Produktinformation



Forschungsprodukte & Biochemikalien



Zellkultur & Verbrauchsmaterial



Diagnostik & molekulare Diagnostik



Laborgeräte & Service

Weitere Information auf den folgenden Seiten!
See the following pages for more information!



Lieferung & Zahlungsart

siehe unsere [Liefer- und Versandbedingungen](#)

Zuschläge

- Mindermengenzuschlag
- Trockeneiszuschlag
- Gefahrgutzuschlag
- Expressversand

SZABO-SCANDIC HandelsgmbH

Quellenstraße 110, A-1100 Wien

T. +43(0)1 489 3961-0

F. +43(0)1 489 3961-7

mail@szabo-scandic.com

www.szabo-scandic.com

[linkedin.com/company/szaboscandic](https://www.linkedin.com/company/szaboscandic) 

LEP monoclonal antibody (M01), clone 3G1-1C9

Catalog # : H00003952-M01

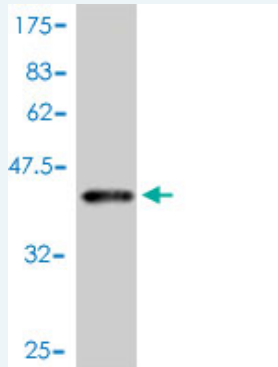
規格 : [100 ug]

[List All](#)

Specification

Product Description:	Mouse monoclonal antibody raised against a full length recombinant LEP.
Immunogen:	LEP (AAH60830.1, 22 a.a. ~ 167 a.a) full-length recombinant protein with GST tag. MW of the GST tag alone is 26 KDa.
Sequence:	VPIQKVQDDTKTLIKTIVTRINDISHTQSVSSKQKVTGLDFIPGLHPILTLSKMDQTLAVYQQILTSMPSRNVIQISNDLENLRDLLHVLAFSKSCHLPWASGLETLDLGGVLEASGYSTEVALSRLQGSLQDMLWQLDLSPGC
Host:	Mouse
Reactivity:	Human
Isotype:	IgG2b Kappa

Quality Control Testing: Antibody Reactive Against Recombinant Protein.



Western Blot detection against Immunogen (41.8 KDa) .

Storage Buffer: In 1x PBS, pH 7.4

Storage Instruction: Store at -20°C or lower. Aliquot to avoid repeated freezing and thawing.

MSDS: [Download](#)

Datasheet: [Download](#)

Applications

Western Blot (Recombinant protein)

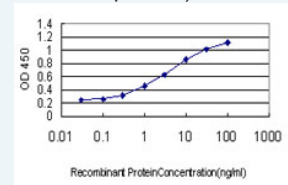
[Protocol Download](#)

Sandwich ELISA (Recombinant protein)

Application Image

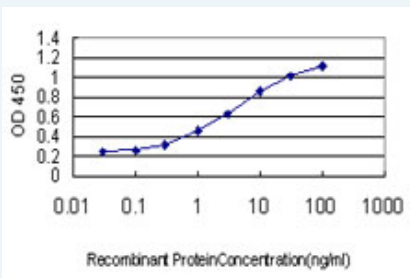
Western Blot (Recombinant protein)

Sandwich ELISA (Recombinant protein)



[enlarge](#)

ELISA



Detection limit for recombinant GST tagged LEP is approximately 0.1ng/ml as a capture antibody.

 [Protocol Download](#)

ELISA

Gene Information

Entrez GeneID: [3952](#)

GeneBank [BC060830](#)

Accession#:

Protein [AAH60830.1](#)

Accession#:

Gene Name: LEP

Gene Alias: FLJ94114,OB,OBS

Gene leptin

Description:

Omim ID: [164160](#)

Gene Ontology: [Hyperlink](#)

Gene Summary: This gene encodes a protein that is secreted by white adipocytes, and which plays a major role in the regulation of body weight. This protein, which acts through the leptin receptor, functions as part of a signaling pathway that can inhibit food intake and/or regulate energy expenditure to maintain constancy of the adipose mass. This protein also has several endocrine functions, and is involved in the regulation of immune and inflammatory responses, hematopoiesis, angiogenesis and wound healing. Mutations in this gene and/or its regulatory regions cause severe obesity, and morbid obesity with hypogonadism. This gene has also been linked to type 2 diabetes mellitus development. [provided by RefSeq]

Other Designations: leptin (murine obesity homolog),leptin (obesity homolog, mouse),obese, mouse, homolog of,obesity factor

Gene Pathway

[Adipocytokine signaling pathway](#) [Cytokine-cytokine receptor interaction](#)
[Jak-STAT signaling pathway](#) [Neuroactive ligand-receptor interaction](#)

Related Disease

[Adenocarcinoma](#) [Albuminuria](#) [Amyotrophic Lateral Sclerosis](#) [Amyotrophic lateral sclerosis](#)
[Anorexia Nervosa](#) [Anoxia](#) [Asthma](#) [Asthma](#) [Atherosclerosis](#) [Atherosclerosis](#)
[Attention Deficit Disorder with Hyperactivity](#) [Autistic Disorder](#) [Behcet Syndrome](#)
[Birth Weight](#) [Body Weight](#) [Breast cancer](#) [Breast Neoplasms](#) [Bulimia](#) [Carcinoma](#)

... see more

