



# SZABO SCANDIC

Part of Europa Biosite

## Produktinformation



Forschungsprodukte & Biochemikalien



Zellkultur & Verbrauchsmaterial



Diagnostik & molekulare Diagnostik



Laborgeräte & Service

Weitere Information auf den folgenden Seiten!  
See the following pages for more information!



### Lieferung & Zahlungsart

siehe unsere [Liefer- und Versandbedingungen](#)

### Zuschläge

- Mindermengenzuschlag
- Trockeneiszuschlag
- Gefahrgutzuschlag
- Expressversand

### SZABO-SCANDIC HandelsgmbH

Quellenstraße 110, A-1100 Wien

T. +43(0)1 489 3961-0

F. +43(0)1 489 3961-7

[mail@szabo-scandic.com](mailto:mail@szabo-scandic.com)

[www.szabo-scandic.com](http://www.szabo-scandic.com)

[linkedin.com/company/szaboscandic](https://www.linkedin.com/company/szaboscandic) 



## LEP monoclonal antibody (M02), clone M1

Catalog # : H00003952-M02

規格 : [ 100 ug ]

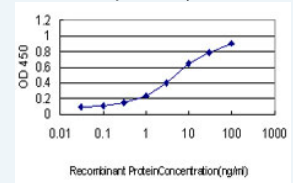
[List All](#)


### Specification

<b>Product Description:</b>	Mouse monoclonal antibody raised against a full length recombinant LEP.
<b>Immunogen:</b>	LEP (AAH60830.1, 22 a.a. ~ 167 a.a) full-length recombinant protein with GST tag. MW of the GST tag alone is 26 KDa.
<b>Sequence:</b>	VPIQKVQDDTKLTIKTIVTRINDISHTQSVSSKQKVTGLDFIPGLHPILTLSKMDQTLAVYQQILTSMPSRNVIQISNDLENLRDLLHVLAFLSKSCHLPWASGLETLDLGGVLEASGYSTEVALSRLQGSLQDMLWQLDLSPGC
<b>Host:</b>	Mouse
<b>Reactivity:</b>	Human
<b>Isotype:</b>	IgG1 Kappa
<b>Quality Control Testing:</b>	Antibody Reactive Against Recombinant Protein.
<b>Storage Buffer:</b>	In 1x PBS, pH 7.4
<b>Storage Instruction:</b>	Store at -20°C or lower. Aliquot to avoid repeated freezing and thawing.
<b>MSDS:</b>	 <a href="#">Download</a>
<b>Datasheet:</b>	 <a href="#">Download</a>

### Application Image

Sandwich ELISA (Recombinant protein)

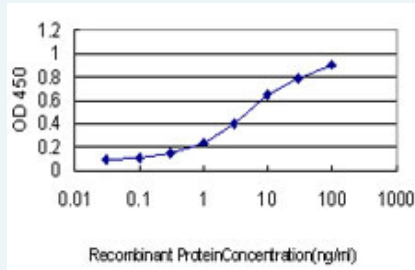


 [enlarge](#)


ELISA

### Applications

Sandwich ELISA (Recombinant protein)



Detection limit for recombinant GST tagged LEP is approximately 0.1ng/ml as a capture antibody.

 [Protocol Download](#)

ELISA

### Gene Information

Entrez GeneID: [3952](#)

GeneBank [BC060830](#)

**Accession#:****Protein** [AAH60830.1](#)**Accession#:****Gene Name:** LEP**Gene Alias:** FLJ94114,OB,OBS**Gene** leptin**Description:****Omim ID:** [164160](#)**Gene Ontology:** [Hyperlink](#)

**Gene Summary:** This gene encodes a protein that is secreted by white adipocytes, and which plays a major role in the regulation of body weight. This protein, which acts through the leptin receptor, functions as part of a signaling pathway that can inhibit food intake and/or regulate energy expenditure to maintain constancy of the adipose mass. This protein also has several endocrine functions, and is involved in the regulation of immune and inflammatory responses, hematopoiesis, angiogenesis and wound healing. Mutations in this gene and/or its regulatory regions cause severe obesity, and morbid obesity with hypogonadism. This gene has also been linked to type 2 diabetes mellitus development. [provided by RefSeq]

**Other Designations:** leptin (murine obesity homolog),leptin (obesity homolog, mouse),obese, mouse, homolog of,obesity factor

**Gene Pathway**

[Adipocytokine signaling pathway](#) [Cytokine-cytokine receptor interaction](#)  
[Jak-STAT signaling pathway](#) [Neuroactive ligand-receptor interaction](#)

**Related Disease**

[Adenocarcinoma](#) [Albuminuria](#) [Amyotrophic Lateral Sclerosis](#) [Amyotrophic lateral sclerosis](#)  
[Anorexia Nervosa](#) [Anoxia](#) [Asthma](#) [Asthma](#) [Atherosclerosis](#) [Atherosclerosis](#)  
[Attention Deficit Disorder with Hyperactivity](#) [Autistic Disorder](#) [Behcet Syndrome](#)  
[Birth Weight](#) [Body Weight](#) [Breast cancer](#) [Breast Neoplasms](#) [Bulimia](#) [Carcinoma](#)

... see more

[服務條款](#) | [隱私權政策](#) | [著作及商標](#) | [網站地圖](#)

©2016 亞諾法生技股份有限公司 Abnova Corporation. 版權所有.