



SZABO SCANDIC

Part of Europa Biosite

Produktinformation



Forschungsprodukte & Biochemikalien



Zellkultur & Verbrauchsmaterial



Diagnostik & molekulare Diagnostik



Laborgeräte & Service

Weitere Information auf den folgenden Seiten!
See the following pages for more information!



Lieferung & Zahlungsart

siehe unsere [Liefer- und Versandbedingungen](#)

Zuschläge

- Mindermengenzuschlag
- Trockeneiszuschlag
- Gefahrgutzuschlag
- Expressversand

SZABO-SCANDIC HandelsgmbH

Quellenstraße 110, A-1100 Wien

T. +43(0)1 489 3961-0

F. +43(0)1 489 3961-7

mail@szabo-scandic.com

www.szabo-scandic.com

[linkedin.com/company/szaboscandic](https://www.linkedin.com/company/szaboscandic) 

LETM1 purified MaxPab mouse polyclonal antibody (B01P) MaxPab®

Catalog # : H00003954-B01P

規格 : [50 ug]

[List All](#)

Specification

Product Description: Mouse polyclonal antibody raised against a full-length human LETM1 protein.

Immunogen: LETM1 (NP_036450.1, 1 a.a. ~ 739 a.a) full-length human protein.

Sequence:
 MASILLRSCRGRAPARLPPPPRYTVPRGSPGDPALHSCASTLGLRNCLN
 VPFGCCTPIHPVYTSSRGDHLGCWALRPECLRIVSRAPWTSTSVGFVAV
 GPQCLPVRGWHSRPRVDDSVVEKSLKSLKDKNKKLEEGGPVYSPPAE
 VVVKSLGQRVLDLKHYYHGFRLWIDTKIAARMLWRILNGHSLTRRER
 RQFLRICADLFRFLVPFLVFVWPFMEFLLPVAVKLFNMLPSTFETQSLK
 EERLKKELRVKLELAKFLQDTIEEMALKNKAAGSATKDFSVFFQKIRET
 GERPSNEEIMRFSKLFEDELTDNLTRPQLVALCKLLELSIGTNNFLRF
 QLTMLRRSIKADDKLAEEGVDSLNVKELQAACRARGMRALGVTEDRLR
 GQLKQWLDLHLHQEIPTSLILSRAMYPDTLSPADQLKSTLQTLPEIVAK
 EAQVKVAEVEGEQVDNKAKLEATLQEEAAIQEHREKELQKRSEVAKDF
 EPERVVAAPQRPGTEPQPEMPDVLQSETLKDTAPVLEGLKEEEITKEEI
 DILSDACSKLQEQQKSLTKEKEELELLKEDVQDYSEDLQEIKKELSKTGE
 EKYVEESKASKRLTKRVQMQMIGQIDGLISQLEMDQQAGKLAPANGMPTG
 ENVISVAELINAMKQVKHIPESKLTSLAAALDENKDGKVNIDDLVKVIELVVK
 EDVHISTSQVAEIVATLEKEEKVEEKEKAKEKAEKEVAEVKS

Host: Mouse

Reactivity: Human

Quality Control Testing: Antibody reactive against mammalian transfected lysate.

Storage Buffer: In 1x PBS, pH 7.4

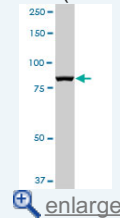
Storage Instruction: Store at -20°C or lower. Aliquot to avoid repeated freezing and thawing.


MSDS:  [Download](#)

Datasheet:  [Download](#)

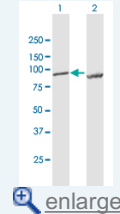
Application Image


Western Blot (Tissue lysate)



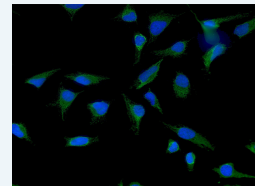
 [enlarge](#)

Western Blot (Transfected lysate)



 [enlarge](#)

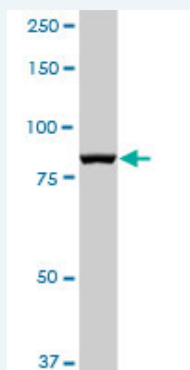
Immunofluorescence



 [enlarge](#)

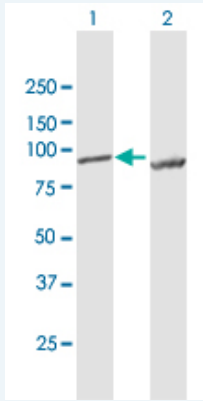
Applications

Western Blot (Tissue lysate)



LETM1 MaxPab polyclonal antibody. Western Blot analysis of LETM1 expression in human

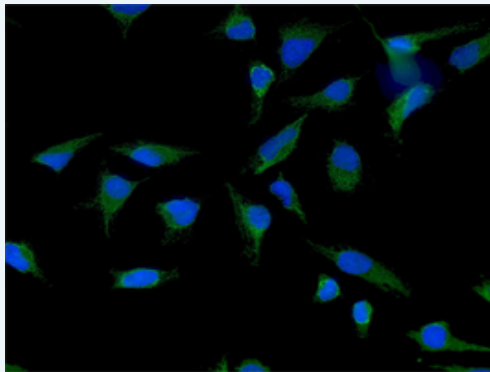
Western Blot (Transfected lysate)




Western Blot analysis of LETM1 expression in transfected 293T cell line ([H00003954-T01](#)) by LETM1 MaxPab polyclonal antibody.

Lane 1: LETM1 transfected lysate(81.29 KDa).
Lane 2: Non-transfected lysate.

Immunofluorescence



 [enlarge this image](#)

Immunofluorescence of purified MaxPab antibody to LETM1 on HeLa cell. [antibody concentration 10 ug/ml]

Gene Information

Entrez GeneID: [3954](#)

GeneBank [NM_012318.1](#)
Accession#:

Protein [NP_036450.1](#)
Accession#:

Gene Name: LETM1

Gene Alias: -

Gene Description: leucine zipper-EF-hand containing transmembrane protein 1

Omim ID: [604407](#)

Gene Ontology: [Hyperlink](#)

Other Designations: -

[服務條款](#) | [隱私權政策](#) | [著作及商標](#) | [網站地圖](#)

©2016 亞諾法生技股份有限公司 Abnova Corporation. 版權所有.