



SZABO SCANDIC

Part of Europa Biosite

Produktinformation



Forschungsprodukte & Biochemikalien



Zellkultur & Verbrauchsmaterial



Diagnostik & molekulare Diagnostik



Laborgeräte & Service

Weitere Information auf den folgenden Seiten!
See the following pages for more information!



Lieferung & Zahlungsart

siehe unsere [Liefer- und Versandbedingungen](#)

Zuschläge

- Mindermengenzuschlag
- Trockeneiszuschlag
- Gefahrgutzuschlag
- Expressversand

SZABO-SCANDIC HandelsgmbH

Quellenstraße 110, A-1100 Wien

T. +43(0)1 489 3961-0

F. +43(0)1 489 3961-7

mail@szabo-scandic.com

www.szabo-scandic.com

[linkedin.com/company/szaboscandic](https://www.linkedin.com/company/szaboscandic) 

LETM1 purified MaxPab rabbit polyclonal antibody (D01P) MaxPab®

Catalog # : H00003954-D01P

規格 : [100 ug]

[List All](#)

Specification

Product Description: Rabbit polyclonal antibody raised against a full-length human LETM1 protein.

Immunogen: LETM1 (NP_036450.1, 1 a.a. ~ 739 a.a) full-length human protein.

Sequence:
 MASILLRSCRGRAPARLPPPPRYTVPRGSPGPAHLSCASTLGLRNCLN
 VPFGCCTPIHPVYTSSRGDHLGCWALRPECLRIVSRAPWTSTSVGFVAV
 GPQCLPVRGWHSRPRVDDSVVEKSLKSLKDKNKKLEEGPVIYSPPAE
 VVVKSLGQRVLDLKHYYHGFRLWIDTKIAARMLWRILNGHSLTRRER
 RQFLRICADLFRLLVFPFLVFWVPMFLLPVAVKLFNMLPSTFETQSLK
 EERLKKELRVKLELAKFLQDTIEEMALKNKAAGSATKDFSVFFQKIRET
 GERPSNEEIMRFSKLFEDLTDNLTRPQLVALCKLLELSIGTNNFLRF
 QLTMLRLRSIKADDKLIAEEGVDSLNVKELQAACRARGMRALGVTEDRLR
 GQLKQWLDLHLHQEIPSTLLILSRAMYPDTLSPADQLKSTLQTLPEIVAK
 EAQVVAEVEGEQVDNKAKLEATLQEEAAIQEHREKELQKRSEVAKDF
 EPERVVAAPQRPGTEPQPEMPDVLQSETLKDTAPVLEGLKEEITKEEI
 DILSDACSKLQEKKSLTKEKEELELLKEDVQDYSEDLQEIKKELSKTGE
 EKYVEESKASKRLTKRVQMQMIGQIDGLISQLEMDQQAGKLAPANGMPTG
 ENVISVAELINAMKQVKHIPESKLTSLAAALDENKDGKVNIDDLVKVIELVDK
 EDVHISTSQVAEIVATLEKEEKVEEKEKAKEKAKEVAEVEVKS

Host: Rabbit

Reactivity: Human, Mouse

Quality Control Testing: Antibody reactive against mammalian transfected lysate.

Storage Buffer: In 1x PBS, pH 7.4

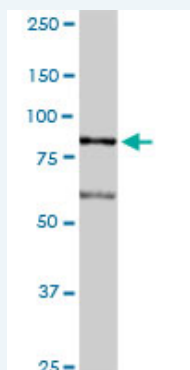
Storage Instruction: Store at -20°C or lower. Aliquot to avoid repeated freezing and thawing.

MSDS:  [Download](#)

Datasheet:  [Download](#)

Applications

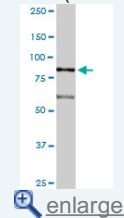
Western Blot (Tissue lysate)



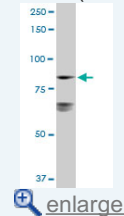
LETM1 MaxPab rabbit polyclonal antibody. Western Blot analysis of LETM1 expression in

Application Image

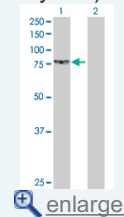
Western Blot (Tissue lysate)



Western Blot (Cell lysate)



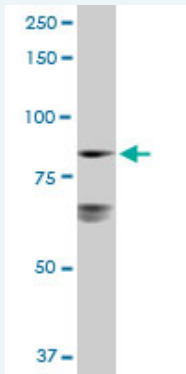
Western Blot (Transfected lysate)



mouse kidney.

 [Protocol Download](#)

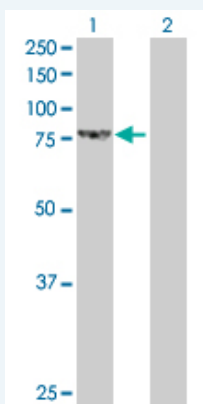
Western Blot (Cell lysate)



LETM1 MaxPab rabbit polyclonal antibody. Western Blot analysis of LETM1 expression in A-431.

 [Protocol Download](#)


Western Blot (Transfected lysate)



Western Blot analysis of LETM1 expression in transfected 293T cell line ([H00003954-T01](#)) by LETM1 MaxPab polyclonal antibody.

Lane 1: LETM1 transfected lysate(83.40 KDa).

Lane 2: Non-transfected lysate.

 [Protocol Download](#)

Gene Information

Entrez GeneID: [3954](#)

GeneBank [NM_012318.1](#)

Accession#:

Protein [NP_036450.1](#)

Accession#:

Gene Name: LETM1

Gene Alias: -

Gene Description: leucine zipper-EF-hand containing transmembrane protein 1

Omim ID: [604407](#)

Gene Ontology: [Hyperlink](#)

Other Designations: -

[服務條款](#) | [隱私權政策](#) | [著作及商標](#) | [網站地圖](#)

©2016 亞諾法生技股份有限公司 Abnova Corporation. 版權所有.