



# SZABO SCANDIC

Part of Europa Biosite

## Produktinformation



Forschungsprodukte & Biochemikalien



Zellkultur & Verbrauchsmaterial



Diagnostik & molekulare Diagnostik



Laborgeräte & Service

Weitere Information auf den folgenden Seiten!  
See the following pages for more information!



### Lieferung & Zahlungsart

siehe unsere [Liefer- und Versandbedingungen](#)

### Zuschläge

- Mindermengenzuschlag
- Trockeneiszuschlag
- Gefahrgutzuschlag
- Expressversand

### SZABO-SCANDIC HandelsgmbH

Quellenstraße 110, A-1100 Wien

T. +43(0)1 489 3961-0

F. +43(0)1 489 3961-7

[mail@szabo-scandic.com](mailto:mail@szabo-scandic.com)

[www.szabo-scandic.com](http://www.szabo-scandic.com)

[linkedin.com/company/szaboscandic](https://www.linkedin.com/company/szaboscandic) 

## LGALS1 purified MaxPab mouse polyclonal antibody (B01P) MaxPab®

Catalog # : H00003956-B01P

規格 : [ 50 ug ]

[List All](#)

### Specification

**Product Description:** Mouse polyclonal antibody raised against a full-length human LGALS1 protein.

**Immunogen:** LGALS1 (NP\_002296.1, 1 a.a. ~ 135 a.a) full-length human protein.

**Sequence:** MACGLVASNLNLKPGECLRVRGEVAPDAKSFVLNLGKDSNNLCLHFNPR  
FNAHGDANTVCNSKDGGAWGTEQREAVFPFQPGSVAEVCITFDQANLT  
VKLPDGYEFKFPNRLNLEAINYMAADGDFKIKCVAFD

**Host:** Mouse

**Reactivity:** Human

**Quality Control Testing:** Antibody reactive against mammalian transfected lysate.

**Storage Buffer:** In 1x PBS, pH 7.4

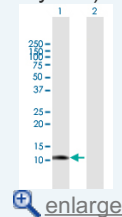
**Storage Instruction:** Store at -20°C or lower. Aliquot to avoid repeated freezing and thawing.

**MSDS:**  [Download](#)

**Datasheet:**  [Download](#)

### Application Image

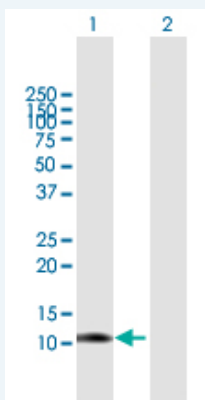
Western Blot (Transfected lysate)



 [enlarge](#)

### Applications

Western Blot (Transfected lysate)



Western Blot analysis of LGALS1 expression in transfected 293T cell line ([H00003956-T02](#)) by LGALS1 MaxPab polyclonal antibody.

Lane 1: LGALS1 transfected lysate(14.70 KDa).

Lane 2: Non-transfected lysate.

 [Protocol Download](#)

### Gene Information

**Entrez GeneID:** [3956](#)

**GeneBank** [NM\\_002305](#)

**Accession#:**

**Protein** [NP\\_002296.1](#)

**Accession#:**

**Gene Name:** LGALS1

**Gene Alias:** DKFZp686E23103,GAL1,GBP

**Gene** lectin, galactoside-binding, soluble, 1

**Description:**

**Omim ID:** [150570](#)

**Gene Ontology:** [Hyperlink](#)

**Gene Summary:** The galectins are a family of beta-galactoside-binding proteins implicated in modulating cell-cell and cell-matrix interactions. This gene product may act as an autocrine negative growth factor that regulates cell proliferation. [provided by RefSeq]

**Other** OTTHUMP00000028982,S-Lac lectin 1,beta-galactoside-binding lectin

**Designations:** L-14-l,galaptin,galectin 1,galectin-1,lactose-binding lectin 1

#### **Related Disease**

[Cardiovascular Diseases](#) [Diabetes Mellitus, Type 2](#) [Edema](#)

[Genetic Predisposition to Disease](#) [Myasthenia Gravis](#) [Thyroid Neoplasms](#)

[服務條款](#) | [隱私權政策](#) | [著作及商標](#) | [網站地圖](#)

©2016 亞諾法生技股份有限公司 Abnova Corporation. 版權所有.