



SZABO SCANDIC

Part of Europa Biosite

Produktinformation



Forschungsprodukte & Biochemikalien



Zellkultur & Verbrauchsmaterial



Diagnostik & molekulare Diagnostik



Laborgeräte & Service

Weitere Information auf den folgenden Seiten!
See the following pages for more information!



Lieferung & Zahlungsart

siehe unsere [Liefer- und Versandbedingungen](#)

Zuschläge

- Mindermengenzuschlag
- Trockeneiszuschlag
- Gefahrgutzuschlag
- Expressversand

SZABO-SCANDIC HandelsgmbH

Quellenstraße 110, A-1100 Wien

T. +43(0)1 489 3961-0

F. +43(0)1 489 3961-7

mail@szabo-scandic.com

www.szabo-scandic.com

[linkedin.com/company/szaboscandic](https://www.linkedin.com/company/szaboscandic) 

LGALS1 purified MaxPab rabbit polyclonal antibody (D01P) MaxPab®

Catalog # : H00003956-D01P

規格 : [100 ug]

[List All](#)

Specification

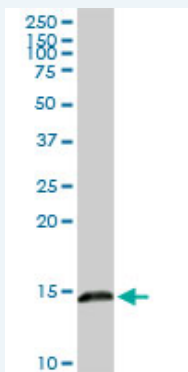
Product Description:	Rabbit polyclonal antibody raised against a full-length human LGALS1 protein.
Immunogen:	LGALS1 (NP_002296.1, 1 a.a. ~ 135 a.a) full-length human protein.
Sequence:	MACGLVASNLNLKPGECLRVRGEVAPDAKSFVLNLGKDSNNLCLHFNPR FNAHGDANTIVCNSKDGGAWGTEQREAVFPFQPGSVAEVCITFDQANLT VKLPDGYEFKFPNRLNLEAINYMAADGDFKIKCVAFD
Host:	Rabbit
Reactivity:	Human, Mouse
Quality Control Testing:	Antibody reactive against mammalian transfected lysate.
Storage Buffer:	In 1x PBS, pH 7.4
Storage Instruction:	Store at -20°C or lower. Aliquot to avoid repeated freezing and thawing.
MSDS:	Download
Datasheet:	Download

Publication Reference

1. [Transgenic overexpression of the \$\alpha\$ 7 integrin reduces muscle pathology and improves viability in the dyW mouse model of merosin-deficient congenital muscular dystrophy type 1A.](#)
Doe JA, Wuebbles RD, Allred ET, Rooney JE, Elorza M, Burkin DJ. J Cell Sci. 2011 Jul 1;124(Pt 13):2287-97. Epub 2011 Jun 7.

Applications

Western Blot (Tissue lysate)

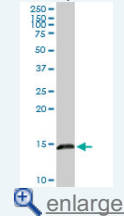


LGALS1 MaxPab rabbit polyclonal antibody. Western Blot analysis of LGALS1 expression in human kidney.

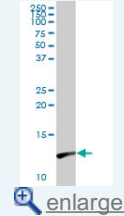
[Protocol Download](#)

Application Image

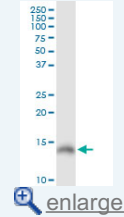
Western Blot (Tissue lysate)



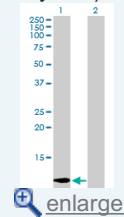
Western Blot (Tissue lysate)



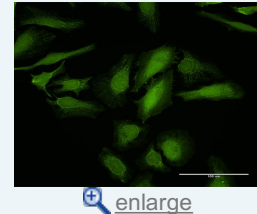
Western Blot (Cell lysate)



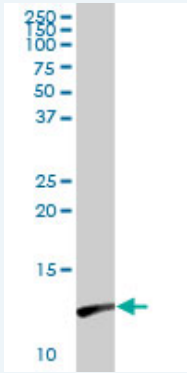
Western Blot (Transfected lysate)




Immunofluorescence



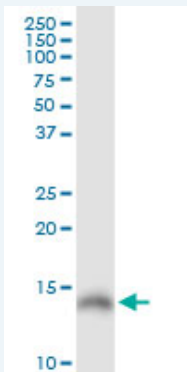
Western Blot (Tissue lysate)



LGALS1 MaxPab rabbit polyclonal antibody. Western Blot analysis of LGALS1 expression in mouse spleen.

 [Protocol Download](#)

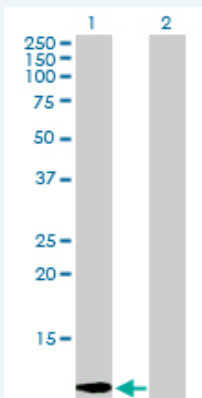
Western Blot (Cell lysate)



LGALS1 MaxPab rabbit polyclonal antibody. Western Blot analysis of LGALS1 expression in HeLa.

 [Protocol Download](#)

Western Blot (Transfected lysate)



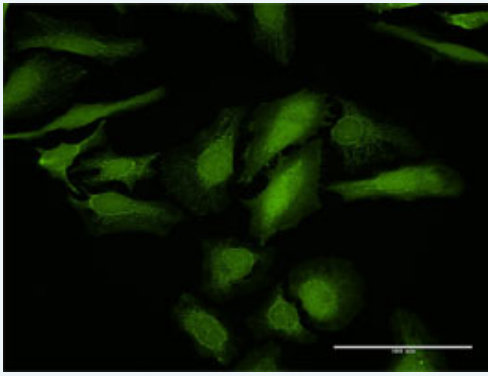
Western Blot analysis of LGALS1 expression in transfected 293T cell line ([H00003956-T01](#)) by LGALS1 MaxPab polyclonal antibody.

Lane 1: LGALS1 transfected lysate(14.70 KDa).

Lane 2: Non-transfected lysate.


 [Protocol Download](#)

Immunofluorescence



[enlarge this image](#)

Immunofluorescence of purified MaxPab antibody to LGALS1 on HeLa cell. [antibody concentration 10 ug/ml]

 [Protocol Download](#)

Gene Information

Entrez GeneID: [3956](#)

**GeneBank
Accession#:** [NM_002305](#)

**Protein
Accession#:** [NP_002296.1](#)

Gene Name: LGALS1

Gene Alias: DKFZp686E23103,GAL1,GBP

**Gene
Description:** lectin, galactoside-binding, soluble, 1

Omim ID: [150570](#)

Gene Ontology: [Hyperlink](#)

Gene Summary: The galectins are a family of beta-galactoside-binding proteins implicated in modulating cell-cell and cell-matrix interactions. This gene product may act as an autocrine negative growth factor that regulates cell proliferation. [provided by RefSeq]

**Other
Designations:** OTTHUMP00000028982,S-Lac lectin 1,beta-galactoside-binding lectin L-14-I,galaptin,galectin 1,galectin-1,lactose-binding lectin 1

Related Disease

[Cardiovascular Diseases](#) [Diabetes Mellitus, Type 2](#) [Edema](#)
[Genetic Predisposition to Disease](#) [Myasthenia Gravis](#) [Thyroid Neoplasms](#)

[服務條款](#) | [隱私權政策](#) | [著作及商標](#) | [網站地圖](#)

©2016 亞諾法生技股份有限公司 Abnova Corporation. 版權所有.