



# SZABO SCANDIC

Part of Europa Biosite

## Produktinformation



Forschungsprodukte & Biochemikalien



Zellkultur & Verbrauchsmaterial



Diagnostik & molekulare Diagnostik



Laborgeräte & Service

Weitere Information auf den folgenden Seiten!  
See the following pages for more information!



### Lieferung & Zahlungsart

siehe unsere [Liefer- und Versandbedingungen](#)

### Zuschläge

- Mindermengenzuschlag
- Trockeneiszuschlag
- Gefahrgutzuschlag
- Expressversand

### SZABO-SCANDIC HandelsgmbH

Quellenstraße 110, A-1100 Wien

T. +43(0)1 489 3961-0

F. +43(0)1 489 3961-7

[mail@szabo-scandic.com](mailto:mail@szabo-scandic.com)

[www.szabo-scandic.com](http://www.szabo-scandic.com)

[linkedin.com/company/szaboscandic](https://www.linkedin.com/company/szaboscandic) 

## LGALS1 monoclonal antibody (M03), clone 1A8

Catalog # : H00003956-M03

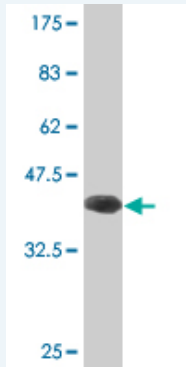
規格 : [ 100 ug ]

List All

### Specification

<b>Product Description:</b>	Mouse monoclonal antibody raised against a partial recombinant LGALS1.
<b>Immunogen:</b>	LGALS1 (NP_002296, 1 a.a. ~ 100 a.a) partial recombinant protein with GST tag. MW of the GST tag alone is 26 KDa.
<b>Sequence:</b>	MACGLVASNLNLKPGECLRVRGEVAPDAKSFVLNLGKDSNNLCLHFNPR FNAHGDANTIVCNSKDGGAWGTEQREAVFPFQPGSVAEVCITFDQANLT VK
<b>Host:</b>	Mouse
<b>Reactivity:</b>	Human
<b>Isotype:</b>	IgG2b Kappa

**Quality Control Testing:** Antibody Reactive Against Recombinant Protein.



Western Blot detection against Immunogen (36.74 KDa) .

**Storage Buffer:** In 1x PBS, pH 7.4

**Storage Instruction:** Store at -20°C or lower. Aliquot to avoid repeated freezing and thawing.

**MSDS:** [Download](#)

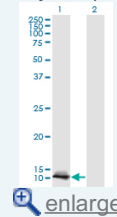
**Datasheet:** [Download](#)

### Applications

Western Blot (Transfected lysate)

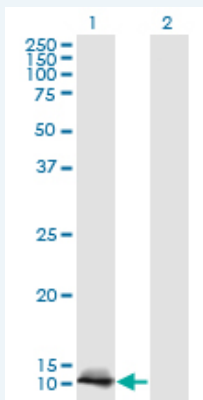
### Application Image

Western Blot (Transfected lysate)



Western Blot (Recombinant protein)

ELISA




Western Blot analysis of LGALS1 expression in transfected 293T cell line by LGALS1 monoclonal antibody (M03), clone 1A8.

Lane 1: LGALS1 transfected lysate(14.7 KDa).  
Lane 2: Non-transfected lysate.

 [Protocol Download](#)

### Western Blot (Recombinant protein)

 [Protocol Download](#)

### ELISA

### Gene Information

Entrez GeneID: [3956](#)

GeneBank [NM\\_002305](#)  
Accession#:

Protein [NP\\_002296](#)  
Accession#:

Gene Name: LGALS1

Gene Alias: DKFZp686E23103,GAL1,GBP

Gene Description: lectin, galactoside-binding, soluble, 1

Omim ID: [150570](#)

Gene Ontology: [Hyperlink](#)

**Gene Summary:** The galectins are a family of beta-galactoside-binding proteins implicated in modulating cell-cell and cell-matrix interactions. This gene product may act as an autocrine negative growth factor that regulates cell proliferation. [provided by RefSeq]

**Other Designations:** OTTHUMP00000028982,S-Lac lectin 1,beta-galactoside-binding lectin L-14-I,galaptin,galectin 1,galectin-1,lactose-binding lectin 1

### Related Disease

[Cardiovascular Diseases](#) [Diabetes Mellitus, Type 2](#) [Edema](#)  
[Genetic Predisposition to Disease](#) [Myasthenia Gravis](#) [Thyroid Neoplasms](#)