



SZABO SCANDIC

Part of Europa Biosite

Produktinformation



Forschungsprodukte & Biochemikalien



Zellkultur & Verbrauchsmaterial



Diagnostik & molekulare Diagnostik



Laborgeräte & Service

Weitere Information auf den folgenden Seiten!
See the following pages for more information!



Lieferung & Zahlungsart

siehe unsere [Liefer- und Versandbedingungen](#)

Zuschläge

- Mindermengenzuschlag
- Trockeneiszuschlag
- Gefahrgutzuschlag
- Expressversand

SZABO-SCANDIC HandelsgmbH

Quellenstraße 110, A-1100 Wien

T. +43(0)1 489 3961-0

F. +43(0)1 489 3961-7

mail@szabo-scandic.com

www.szabo-scandic.com

[linkedin.com/company/szaboscandic](https://www.linkedin.com/company/szaboscandic) 

LGALS3 polyclonal antibody (A01)

Catalog # : H00003958-A01

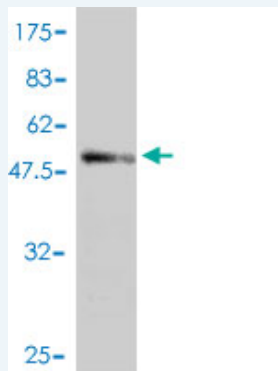
規格 : [50 uL]

List All

Specification

Product Description:	Mouse polyclonal antibody raised against a full-length recombinant LGALS3.
Immunogen:	LGALS3 (AAH01120, 1 a.a. ~ 250 a.a) full-length recombinant protein with GST tag.
Sequence:	MADNFSLHDALSGSGNPNPQGWPWAWGNQAPAGGGYPGASYPGAYP GQAPPGAYPGQAPPAYPGAPGAYPGAPAGVYPPSPGAYPSSG QPSATGAYPATGPYAGAPGLIVPYNLPLPGGVVPRMLITILGTVKPNAN RIALDFQRGNDVAFHFNPRFNENRRVIVCNTKLDNNWGREERQSVFPF ESGKPFKIQVLVEPDHFKVAVNDAHLLQYNHRVKKLNEISKLGISGDIDLTS ASYTMI
Host:	Mouse
Reactivity:	Human

Quality Control Testing: Antibody Reactive Against Recombinant Protein.



Western Blot detection against Immunogen (53.61 KDa) .

Storage Buffer: 50 % glycerol

Storage Instruction: Store at -20°C or lower. Aliquot to avoid repeated freezing and thawing.

MSDS: [Download](#)

Datasheet: [Download](#)

Applications

Western Blot (Recombinant protein)

[Protocol Download](#)

ELISA

Gene Information

Entrez GeneID: [3958](#)

Application Image

Western Blot (Recombinant protein)

ELISA

GeneBank [BC001120](#)

Accession#:

Protein [AAH01120](#)

Accession#:

Gene Name: LGALS3

Gene Alias: CBP35,GAL3,GALBP,GALIG,LGALS2,MAC2

Gene lectin, galactoside-binding, soluble, 3

Description:

Omim ID: [153619](#)

Gene Ontology: [Hyperlink](#)

Other IgE-binding protein,MAC-2 antigen,carbohydrate-binding protein

Designations: 35,galactose-specific lectin 3,galectin 3,galectin-3 internal,laminin-binding protein

Related Disease

[Carcinoma, Papillary](#) [Cardiovascular Diseases](#) [Diabetes Mellitus, Type 1](#)

[Diabetes Mellitus, Type 2](#) [Diabetic Nephropathies](#) [Edema](#)

[Genetic Predisposition to Disease](#) [Thyroid Neoplasms](#)

[服務條款](#) | [隱私權政策](#) | [著作及商標](#) | [網站地圖](#)

©2016 亞諾法生技股份有限公司 Abnova Corporation. 版權所有.