



SZABO SCANDIC

Part of Europa Biosite

Produktinformation



Forschungsprodukte & Biochemikalien



Zellkultur & Verbrauchsmaterial



Diagnostik & molekulare Diagnostik



Laborgeräte & Service

Weitere Information auf den folgenden Seiten!
See the following pages for more information!



Lieferung & Zahlungsart

siehe unsere [Liefer- und Versandbedingungen](#)

Zuschläge

- Mindermengenzuschlag
- Trockeneiszuschlag
- Gefahrgutzuschlag
- Expressversand

SZABO-SCANDIC HandelsgmbH

Quellenstraße 110, A-1100 Wien

T. +43(0)1 489 3961-0

F. +43(0)1 489 3961-7

mail@szabo-scandic.com

www.szabo-scandic.com

[linkedin.com/company/szaboscandic](https://www.linkedin.com/company/szaboscandic) 



LGALS3 purified MaxPab rabbit polyclonal antibody (D01P) MaxPab®

Catalog # : H00003958-D01P

規格 : [100 ug]

List All

Specification

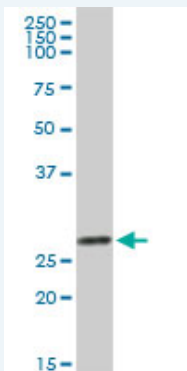
Product Description:	Rabbit polyclonal antibody raised against a full-length human LGALS3 protein.
Immunogen:	LGALS3 (AAH53667.1, 1 a.a. ~ 250 a.a) full-length human protein.
Sequence:	MADNFSLHDALSGSGNPNPQGWPAGWGNQPAGAGGYPGASYPGAYP GQAPPGAYPGQAPPAYHGAPGAYPGAPAPGVYGPSPGAYPSSG QPSAPGAYPATGPYAGAPAGPLVYPYNLPLGGVVRMLITILGTVKPNAN RIALDFQRGNDVAFHFNPRFNENRRVIVCNTKLDNMWGREERQSVFPF ESGKPFKIQVLVEPDHFKVAVND AHL LQYNHRVKKLNEISKLGISGDIDLTS ASYTMI
Host:	Rabbit
Reactivity:	Human, Mouse
Quality Control Testing:	Antibody reactive against mammalian transfected lysate.
Storage Buffer:	In 1x PBS, pH 7.4
Storage Instruction:	Store at -20°C or lower. Aliquot to avoid repeated freezing and thawing.
MSDS:	 Download
Datasheet:	 Download

Publication Reference

1. [A crucial role of anti-RPLP0 and anti-galectin-3 antibodies in the development of skin lesions in systemic lupus erythematosus.](#)
Shi ZR, Tan GZ, Meng Z, Yu M, Li KW, Yin J, Wei KH, Luo YJ, Jia SQ, Zhang SJ, Wu J, Mi XB, Wang L *Arthritis Rheumatol.* 2014 Oct 10. doi: 10.1002/art.38891.

Applications

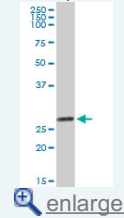
Western Blot (Tissue lysate)



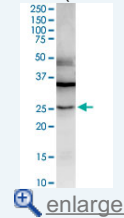
LGALS3 MaxPab rabbit polyclonal antibody. Western Blot analysis of LGALS3 expression in human colon.

Application Image

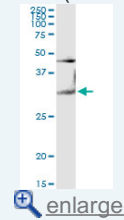
Western Blot (Tissue lysate)



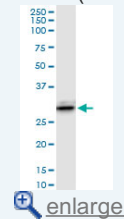
Western Blot (Tissue lysate)



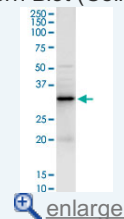
Western Blot (Tissue lysate)



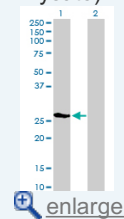
Western Blot (Cell lysate)



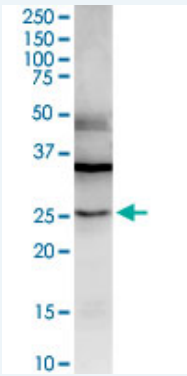
Western Blot (Cell lysate)



Western Blot (Transfected lysate)

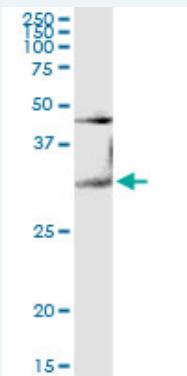


Western Blot (Tissue lysate)



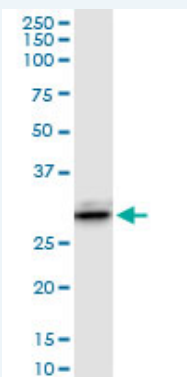
LGALS3 MaxPab rabbit polyclonal antibody. Western Blot analysis of LGALS3 expression in human stomach.

Western Blot (Tissue lysate)



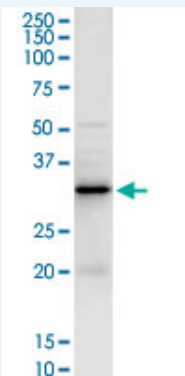
LGALS3 MaxPab rabbit polyclonal antibody. Western Blot analysis of LGALS3 expression in mouse brain.

Western Blot (Cell lysate)



LGALS3 MaxPab rabbit polyclonal antibody. Western Blot analysis of LGALS3 expression in HeLa S3 NE.

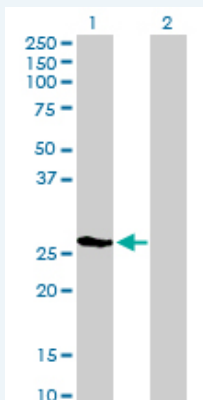
Western Blot (Cell lysate)



LGALS3 MaxPab rabbit polyclonal antibody. Western Blot analysis of LGALS3 expression in Raw 264.7.

 [Protocol Download](#)

Western Blot (Transfected lysate)



Western Blot analysis of LGALS3 expression in transfected 293T cell line ([H00003958-T01](#)) by LGALS3 MaxPab polyclonal antibody.

Lane 1: LGALS3 transfected lysate(26.20 KDa).

Lane 2: Non-transfected lysate.

 [Protocol Download](#)

Gene Information

Entrez GeneID: [3958](#)

GeneBank [NM_002306.1](#)

Accession#:

Protein [AAH53667.1](#)

Accession#:

Gene Name: LGALS3

Gene Alias: CBP35,GAL3,GALBP,GALIG,LGALS2,MAC2

Gene lectin, galactoside-binding, soluble, 3

Description:

Omim ID: [153619](#)

Gene Ontology: [Hyperlink](#)

Other IgE-binding protein,MAC-2 antigen,carbohydrate-binding protein

Designations: 35,galactose-specific lectin 3,galectin 3,galectin-3 internal,laminin-binding protein

Related Disease

[Carcinoma, Papillary Cardiovascular Diseases Diabetes Mellitus, Type 1](#)

[服務條款](#) | [隱私權政策](#) | [著作及商標](#) | [網站地圖](#)

©2016 亞諾法生技股份有限公司 Abnova Corporation. 版權所有.