



# SZABO SCANDIC

Part of Europa Biosite

## Produktinformation



Forschungsprodukte & Biochemikalien



Zellkultur & Verbrauchsmaterial



Diagnostik & molekulare Diagnostik



Laborgeräte & Service

Weitere Information auf den folgenden Seiten!  
See the following pages for more information!



### Lieferung & Zahlungsart

siehe unsere [Liefer- und Versandbedingungen](#)

### Zuschläge

- Mindermengenzuschlag
- Trockeneiszuschlag
- Gefahrgutzuschlag
- Expressversand

### SZABO-SCANDIC HandelsgmbH

Quellenstraße 110, A-1100 Wien

T. +43(0)1 489 3961-0

F. +43(0)1 489 3961-7

[mail@szabo-scandic.com](mailto:mail@szabo-scandic.com)

[www.szabo-scandic.com](http://www.szabo-scandic.com)

[linkedin.com/company/szaboscandic](https://www.linkedin.com/company/szaboscandic) 

## LGALS3 monoclonal antibody (M03), clone 3G8

Catalog # : H00003958-M03

規格 : [ 100 ug ]

[List All](#)

### Specification

**Product Description:** Mouse monoclonal antibody raised against a full-length recombinant LGALS3.

**Immunogen:** LGALS3 (AAH01120, 1 a.a. ~ 250 a.a) full-length recombinant protein with GST tag. MW of the GST tag alone is 26 KDa.

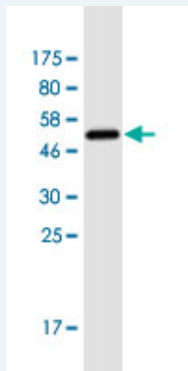
**Sequence:**  
 MADNFSLHDALSGSGNPNPQGWPAGWGNQPAGAGGYPGASYPGAYP  
 GQAPPGAYPGQAPPAYPGAPGAYPGAPAGVYPPSPGAYPSSG  
 QPSATGAYPATGPYAGAPGLIVPYNLPLPGGVVPRMLITILGTVKPNAN  
 RIALDFQRGNDVAFHFNPRFNENRRVIVCNTKLDNNWGREERQSVFPF  
 ESGKPFKIQVLVEPDHFKVAVNDAHLLQYNHRVKKLNEISKLGISGDIDLTS  
 ASYTM

**Host:** Mouse

**Reactivity:** Human

**Isotype:** IgG2a Kappa

**Quality Control Testing:** Antibody Reactive Against Recombinant Protein.



Western Blot detection against Immunogen (53.24 KDa) .

**Storage Buffer:** In 1x PBS, pH 7.4

**Storage Instruction:** Store at -20°C or lower. Aliquot to avoid repeated freezing and thawing.

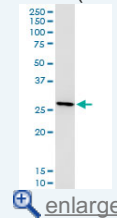
**Datasheet:**  [Download](#)

### Applications

**Western Blot (Cell lysate)**

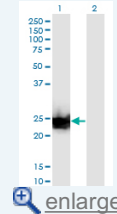
### Application Image

Western Blot (Cell lysate)



[enlarge](#)

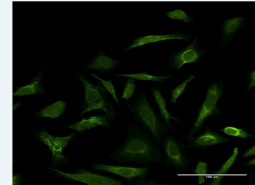
Western Blot (Transfected lysate)



[enlarge](#)

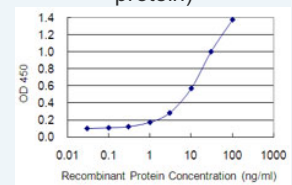
Western Blot (Recombinant protein)

Immunofluorescence



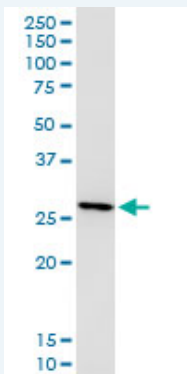
[enlarge](#)

Sandwich ELISA (Recombinant protein)



[enlarge](#)

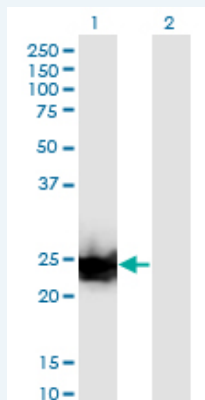
ELISA



LGALS3 monoclonal antibody (M03), clone 3G8. Western Blot analysis of LGALS3 expression in HeLa S3 NE.

[Protocol Download](#)

#### Western Blot (Transfected lysate)



Western Blot analysis of LGALS3 expression in transfected 293T cell line by LGALS3 monoclonal antibody (M03), clone 3G8.

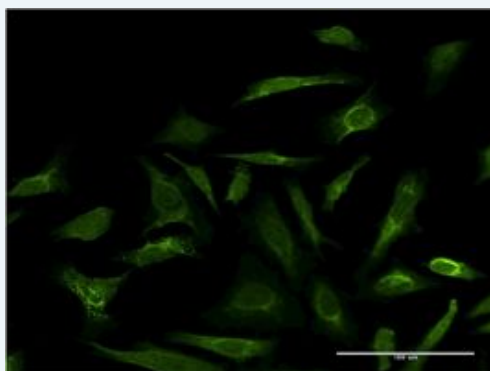
Lane 1: LGALS3 transfected lysate (Predicted MW: 26.2 kDa).  
Lane 2: Non-transfected lysate.

[Protocol Download](#)

#### Western Blot (Recombinant protein)

[Protocol Download](#)

#### Immunofluorescence

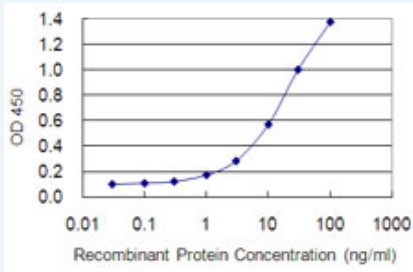


[enlarge this image](#)


Immunofluorescence of monoclonal antibody to LGALS3 on HeLa cell . [antibody concentration 10 ug/ml]

[Protocol Download](#)

#### Sandwich ELISA (Recombinant protein)



Detection limit for recombinant GST tagged LGALS3 is 0.3 ng/ml as a capture antibody.

 [Protocol Download](#)

## ELISA

### Gene Information

Entrez GeneID: [3958](#)

GeneBank [BC001120](#)

Accession#:

Protein [AAH01120](#)

Accession#:

Gene Name: LGALS3

Gene Alias: CBP35,GAL3,GALBP,GALIG,LGALS2,MAC2

Gene Description: lectin, galactoside-binding, soluble, 3

Omim ID: [153619](#)

Gene Ontology: [Hyperlink](#)

Other Designations: IgE-binding protein,MAC-2 antigen,carbohydrate-binding protein 35,galactose-specific lectin 3,galectin 3,galectin-3 internal,laminin-binding protein

### Related Disease

[Carcinoma, Papillary](#) [Cardiovascular Diseases](#) [Diabetes Mellitus, Type 1](#)  
[Diabetes Mellitus, Type 2](#) [Diabetic Nephropathies](#) [Edema](#)  
[Genetic Predisposition to Disease](#) [Thyroid Neoplasms](#)

[服務條款](#) | [隱私權政策](#) | [著作及商標](#) | [網站地圖](#)

©2016 亞諾法生技股份有限公司 Abnova Corporation. 版權所有.