



# SZABO SCANDIC

Part of Europa Biosite

## Produktinformation



Forschungsprodukte & Biochemikalien



Zellkultur & Verbrauchsmaterial



Diagnostik & molekulare Diagnostik



Laborgeräte & Service

Weitere Information auf den folgenden Seiten!  
See the following pages for more information!



### Lieferung & Zahlungsart

siehe unsere [Liefer- und Versandbedingungen](#)

### Zuschläge

- Mindermengenzuschlag
- Trockeneiszuschlag
- Gefahrgutzuschlag
- Expressversand

### SZABO-SCANDIC HandelsgmbH

Quellenstraße 110, A-1100 Wien

T. +43(0)1 489 3961-0

F. +43(0)1 489 3961-7

[mail@szabo-scandic.com](mailto:mail@szabo-scandic.com)

[www.szabo-scandic.com](http://www.szabo-scandic.com)

[linkedin.com/company/szaboscandic](https://www.linkedin.com/company/szaboscandic) 

## LIF purified MaxPab mouse polyclonal antibody (B01P) MaxPab®

Catalog # : H00003976-B01P

規格 : [ 50 ug ]

[List All](#)

### Specification

**Product Description:** Mouse polyclonal antibody raised against a full-length human LIF protein.

**Immunogen:** LIF (NP\_002300.1, 1 a.a. ~ 202 a.a) full-length human protein.

**Sequence:**  
 MKVLAAGVVPLLLVLHWKHGAGSPLPITPVNATCAIRHPCHNLMNQIRS  
 QLAQLNGSANALFILYYTAQGEPPNLDKLCGPNVDFPPFHANGTEK  
 AKLVELYRIVVYLGTSLGNITRDQKILNPSALSLHSKLNATADILRGLLSNVL  
 CRLCSKYHVGHVDVTYGPDTSGKDVFQKKKLGQCQLLGKYKQIIAVLAQA  
 F

**Host:** Mouse

**Reactivity:** Human

**Quality Control Testing:** Antibody reactive against mammalian transfected lysate.

**Storage Buffer:** In 1x PBS, pH 7.4

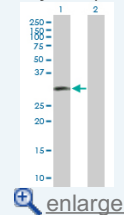
**Storage Instruction:** Store at -20°C or lower. Aliquot to avoid repeated freezing and thawing.

**MSDS:**  [Download](#)

**Datasheet:**  [Download](#)

### Application Image

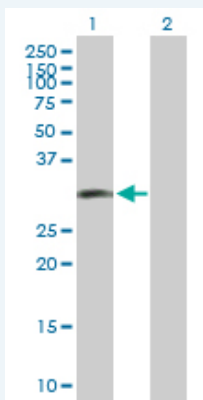
Western Blot (Transfected lysate)



 [enlarge](#)

### Applications

Western Blot (Transfected lysate)



Western Blot analysis of LIF expression in transfected 293T cell line (H00003976-T01) by LIF MaxPab polyclonal antibody.

Lane 1: LIF transfected lysate(22.22 KDa).

Lane 2: Non-transfected lysate.

 [Protocol Download](#)

### Gene Information

Entrez GeneID: [3976](#)

GeneBank [NM\\_002309](#)  
Accession#:

Protein [NP\\_002300.1](#)  
Accession#:

Gene Name: LIF

Gene Alias: CDF,DIA,HILDA

Gene Description: leukemia inhibitory factor (cholinergic differentiation factor)

Omim ID: [159540](#)

Gene Ontology: [Hyperlink](#)

**Gene Summary:** The protein encoded by this gene is a pleiotropic cytokine with roles in several different systems. It is involved in the induction of hematopoietic differentiation in normal and myeloid leukemia cells, induction of neuronal cell differentiation, regulator of mesenchymal to epithelial conversion during kidney development, and may also have a role in immune tolerance at the maternal-fetal interface. [provided by RefSeq]

**Other Designations:** D factor, cholinergic differentiation factor, differentiation inhibitory activity, differentiation stimulating factor

#### Gene Pathway

[Cytokine-cytokine receptor interaction](#) [Jak-STAT signaling pathway](#)

#### Related Disease

[Abortion, Spontaneous](#) [Arthritis, Rheumatoid](#) [Brain Ischemia](#) [Cardiovascular Diseases](#) [Cerebrovascular Accident](#) [Dementia, Vascular](#) [Diabetes Mellitus, Type 2](#) [Edema](#) [Endometriosis](#) [Genetic Predisposition to Disease](#) [Infertility, Female](#) [Memory, Short-Term](#) [Mental Disorders](#) [Multiple Sclerosis](#) [Neuropsychological Tests](#) [Obesity](#) [Ovarian Failure, Premature](#) [Polycystic Ovary Syndrome](#) [Puberty, Delayed](#)

... see more