



# SZABO SCANDIC

Part of Europa Biosite

## Produktinformation



Forschungsprodukte & Biochemikalien



Zellkultur & Verbrauchsmaterial



Diagnostik & molekulare Diagnostik



Laborgeräte & Service

Weitere Information auf den folgenden Seiten!  
See the following pages for more information!



### Lieferung & Zahlungsart

siehe unsere [Liefer- und Versandbedingungen](#)

### Zuschläge

- Mindermengenzuschlag
- Trockeneiszuschlag
- Gefahrgutzuschlag
- Expressversand

### SZABO-SCANDIC HandelsgmbH

Quellenstraße 110, A-1100 Wien

T. +43(0)1 489 3961-0

F. +43(0)1 489 3961-7

[mail@szabo-scandic.com](mailto:mail@szabo-scandic.com)

[www.szabo-scandic.com](http://www.szabo-scandic.com)

[linkedin.com/company/szaboscandic](https://www.linkedin.com/company/szaboscandic) 

## LIG1 polyclonal antibody (A01)

Catalog # : H00003978-A01

規格 : [ 50 uL ]

List All

### Specification

**Product Description:** Mouse polyclonal antibody raised against a partial recombinant LIG1.

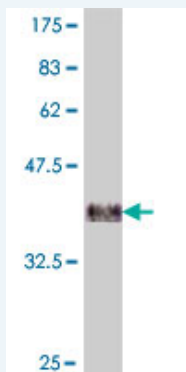
**Immunogen:** LIG1 (NP\_000225, 810 a.a. ~ 919 a.a) partial recombinant protein with GST tag.

**Sequence:** QSLKALVLPSPRPYVRIDGAVIPDHWLDPSAWWEVKCADLSLSPIYPAAR  
GLVDSKGLSLRFRPRFIRVREDKQPEQATTSQVACLRYRQSQIQNQQG  
EDSGSDPEDTY

**Host:** Mouse

**Reactivity:** Human

**Quality Control Testing:** Antibody Reactive Against Recombinant Protein.



Western Blot detection against Immunogen (38.21 KDa) .

**Storage Buffer:** 50 % glycerol

**Storage Instruction:** Store at -20°C or lower. Aliquot to avoid repeated freezing and thawing.

**MSDS:** [Download](#)

**Datasheet:** [Download](#)

### Applications

**Western Blot (Recombinant protein)**

[Protocol Download](#)

**ELISA**

### Gene Information

**Entrez GeneID:** [3978](#)

**GeneBank Accession#:** [NM\\_000234](#)

### Application Image

Western Blot (Recombinant protein)

ELISA

**Protein Accession#:** [NP\\_000225](#)

**Gene Name:** [LIG1](#)

**Gene Alias:** [MGC117397](#), [MGC130025](#)

**Gene Description:** [ligase I, DNA, ATP-dependent](#)

**Omim ID:** [126391](#)

**Gene Ontology:** [Hyperlink](#)

**Gene Summary:** [LIG1 encodes DNA ligase I, with functions in DNA replication and the base excision repair process. Mutations in LIG1 that lead to DNA ligase I deficiency result in immunodeficiency and increased sensitivity to DNA-damaging agents. \[provided by RefSeq\]](#)

**Other Designations:** [DNA ligase I](#)

### Gene Pathway

[Base excision repair](#) [DNA replication](#) [Mismatch repair](#) [Nucleotide excision repair](#)

### Related Disease

[Adenocarcinoma](#) [Ataxia telangiectasia](#) [Brain Neoplasms](#) [Breast cancer](#) [Breast Neoplasms](#) [Carcinoma, Small Cell](#) [Carcinoma, Squamous Cell](#) [Cardiovascular Diseases](#) [Colorectal Neoplasms](#) [Diabetes Mellitus, Type 2](#) [DNA Damage](#) [Edema](#) [Esophageal Neoplasms](#) [Genetic Predisposition to Disease](#) [Glioma](#) [Graft vs Host Disease](#) [Head and Neck Neoplasms](#) [Hematologic Diseases](#) [Hodgkin Disease](#)

... see more