



SZABO SCANDIC

Part of Europa Biosite

Produktinformation



Forschungsprodukte & Biochemikalien



Zellkultur & Verbrauchsmaterial



Diagnostik & molekulare Diagnostik



Laborgeräte & Service

Weitere Information auf den folgenden Seiten!
See the following pages for more information!



Lieferung & Zahlungsart

siehe unsere [Liefer- und Versandbedingungen](#)

Zuschläge

- Mindermengenzuschlag
- Trockeneiszuschlag
- Gefahrgutzuschlag
- Expressversand

SZABO-SCANDIC HandelsgmbH

Quellenstraße 110, A-1100 Wien

T. +43(0)1 489 3961-0

F. +43(0)1 489 3961-7

mail@szabo-scandic.com

www.szabo-scandic.com

[linkedin.com/company/szaboscandic](https://www.linkedin.com/company/szaboscandic) 

LIG1 MaxPab mouse polyclonal antibody (B01) MaxPab®

Catalog # : H00003978-B01

規格 : [50 uL]

[List All](#)

Specification

Product Description: Mouse polyclonal antibody raised against a full-length human LIG1 protein.

Immunogen: LIG1 (NP_000225.1, 1 a.a. ~ 919 a.a) full-length human protein.

Sequence:
 MQRSIMSFFHPKKEGKAKKPEKEASNSSRETEPPPKAALKEWNGVWSES
 DSPVKRPGRKAARVLGSEGEEDDEALSPAKGQKPALDCSQVSPRPAT
 SPENNASLSDTSPMDSSPSGIPKRRTARKQLPKRTIQEVLEEQSEDEDRE
 AKRKKEEEEEETPKESLTEAEVATEKEGEDGDQPTTPPKPLKTSKAETP
 TESVSEPEVATKQELQEEEEQTKPPRRAPKTLSSFFTPRKPVKKEVKE
 EEPGAPGKEGAAEGPLDPSGYNPAKNYHPVEDACWKPGQKVPYLAVA
 RTFEKIEVSARLRMVETLSNLLRSVVALSPPDLLPVLYLSLNLHGPPQQ
 GLELGVGVDGVLKAVAQATGRQLESVRAEAAEKGDVGLVAENSRSTQR
 LMLPPPPLTASGVFSKFRDIARLTGSASTAKKIDIIKGLFVACRHSEARFIA
 RLSLGRRLRLGLAEQSVLAALSQAVSLTPPGQEFPPAMVDAGKGTAEAE
 RKTWLEEQGMILKQTFCEVPDLDRIPVLEHGLERLPEHCKLSPGIPLKP
 MLAHPTRGISEVLKRFEEAAFTCEYKYDGGQRAQIHALEGGEVKIFSRNQE
 DNTGKYPDIISRIPKIKLPSVTSFILDTEAVAWDREKKQIQPFQVLTTRKRK
 EVDASEIQVQVCLYAFDLIYLNAGESLVREPLSRRRQLLRENFVETEGEFV
 FATSLDTKDIEQIAEFLEQSVKDSCEGLMVKTLDVDATYEIAKRSHNWLKL
 KKDYL DGVGDTLDLWIGAYLGRGKRAGRYGGFLLASYDEDSEELQAIC
 KLGTGFSDEELEEHHQSLKALVLPSPRPYVRIDGAVIPDHWLDPSAVWEV
 KCADLSLSPIYPAARGLVDSKGISLRFPRFIRVREDKQPEQATTSQVA
 CLYRKQSQIQNQGGEDSGSDPEDTY

Host: Mouse

Reactivity: Human

Quality Control Testing: Antibody reactive against mammalian transfected lysate.

Storage Buffer: No additive

Storage Instruction: Store at -20°C or lower. Aliquot to avoid repeated freezing and thawing.

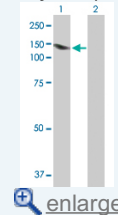
Note: For IHC and IF applications, antibody purification with Protein A will be needed prior to use.

MSDS: [Download](#)

Datasheet: [Download](#)

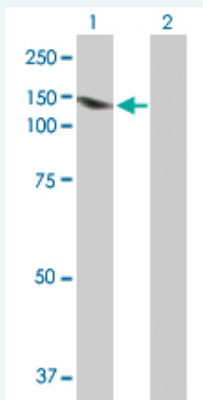
Application Image

Western Blot (Transfected lysate)



Applications


Western Blot (Transfected lysate)



Western Blot analysis of LIG1 expression in transfected 293T cell line ([H00003978-T02](#)) by LIG1 MaxPab polyclonal antibody.

Lane 1: LIG1 transfected lysate(101.70 KDa).

Lane 2: Non-transfected lysate.

 [Protocol Download](#)

Gene Information

Entrez GeneID: [3978](#)

GeneBank [NM_000234](#)

Accession#:

Protein [NP_000225.1](#)

Accession#:

Gene Name: LIG1

Gene Alias: MGC117397,MGC130025

Gene ligase I, DNA, ATP-dependent

Description:

Omim ID: [126391](#)

Gene Ontology: [Hyperlink](#)

Gene Summary: LIG1 encodes DNA ligase I, with functions in DNA replication and the base excision repair process. Mutations in LIG1 that lead to DNA ligase I deficiency result in immunodeficiency and increased sensitivity to DNA-damaging agents. [provided by RefSeq]

Other DNA ligase I

Designations:

Gene Pathway

[Base excision repair](#) [DNA replication](#) [Mismatch repair](#) [Nucleotide excision repair](#)

Related Disease

[Adenocarcinoma](#) [Ataxia telangiectasia](#) [Brain Neoplasms](#) [Breast cancer](#) [Breast Neoplasms](#) [Carcinoma, Small Cell](#) [Carcinoma, Squamous Cell](#) [Cardiovascular Diseases](#) [Colorectal Neoplasms](#) [Diabetes Mellitus, Type 2](#) [DNA Damage](#) [Edema](#) [Esophageal Neoplasms](#) [Genetic Predisposition to Disease](#) [Glioma](#) [Graft vs Host Disease](#) [Head and Neck Neoplasms](#) [Hematologic Diseases](#) [Hodgkin Disease](#)

... see more

