



SZABO SCANDIC

Part of Europa Biosite

Produktinformation



Forschungsprodukte & Biochemikalien



Zellkultur & Verbrauchsmaterial



Diagnostik & molekulare Diagnostik



Laborgeräte & Service

Weitere Information auf den folgenden Seiten!
See the following pages for more information!



Lieferung & Zahlungsart

siehe unsere [Liefer- und Versandbedingungen](#)

Zuschläge

- Mindermengenzuschlag
- Trockeneiszuschlag
- Gefahrgutzuschlag
- Expressversand

SZABO-SCANDIC HandelsgmbH

Quellenstraße 110, A-1100 Wien

T. +43(0)1 489 3961-0

F. +43(0)1 489 3961-7

mail@szabo-scandic.com

www.szabo-scandic.com

[linkedin.com/company/szaboscandic](https://www.linkedin.com/company/szaboscandic) 

LIG1 monoclonal antibody (M01), clone AG12

Catalog # : H00003978-M01

規格 : [100 ug]

[List All](#)

Specification

Product Description: Mouse monoclonal antibody raised against a partial recombinant LIG1.

Immunogen: LIG1 (NP_000225, 810 a.a. ~ 919 a.a) partial recombinant protein with GST tag. MW of the GST tag alone is 26 KDa.

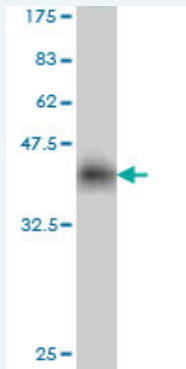
Sequence: QSLKALVLPSPRPYVRIDGAVIPDHWLDPSAWWEVKCADLSLSPIYPAAR
GLVDSKIGISLRFPRFIRVREDKQPEQATTSQVACLRYKQSQIQNQQG
EDSGSDPEDTY

Host: Mouse

Reactivity: Human

Isotype: IgG2a Kappa

Quality Control Testing: Antibody Reactive Against Recombinant Protein.



Western Blot detection against Immunogen (37.84 KDa) .

Storage Buffer: In 1x PBS, pH 7.4

Storage Instruction: Store at -20°C or lower. Aliquot to avoid repeated freezing and thawing.

MSDS: [Download](#)

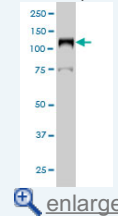
Datasheet: [Download](#)

Applications

Western Blot (Cell lysate)

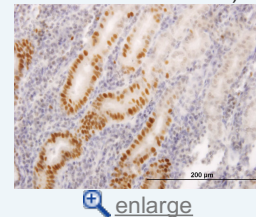
Application Image

Western Blot (Cell lysate)

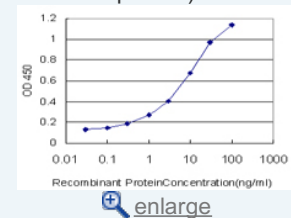


Western Blot (Recombinant protein)

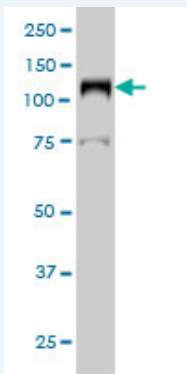
Immunohistochemistry (Formalin/PFA-fixed paraffin-embedded sections)



Sandwich ELISA (Recombinant protein)



ELISA



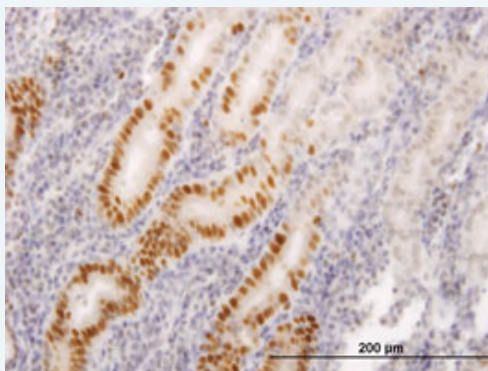
LIG1 monoclonal antibody (M01), clone AG12 Western Blot analysis of LIG1 expression in HeLa S3 NE (Cat # L013V3).

[Protocol Download](#)

Western Blot (Recombinant protein)

[Protocol Download](#)

Immunohistochemistry (Formalin/PFA-fixed paraffin-embedded sections)

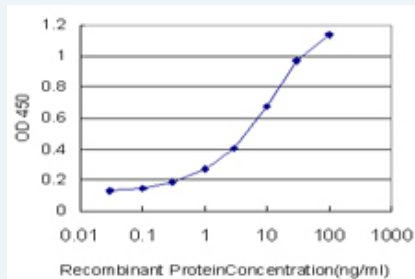


[enlarge this image](#)

Immunoperoxidase of monoclonal antibody to LIG1 on formalin-fixed paraffin-embedded human stomach. [antibody concentration 1.2 ug/ml]

[Protocol Download](#)

Sandwich ELISA (Recombinant protein)



Detection limit for recombinant GST tagged LIG1 is approximately 0.3ng/ml as a capture antibody.

[Protocol Download](#)

ELISA

Gene Information

Entrez GeneID: [3978](#)

GeneBank [NM_000234](#)
Accession#:

Protein [NP_000225](#)
Accession#:

Gene Name: LIG1

Gene Alias: MGC117397, MGC130025

Gene ligase I, DNA, ATP-dependent

Description:

Omim ID: [126391](#)

Gene Ontology: [Hyperlink](#)

Gene Summary: [LIG1](#) encodes DNA ligase I, with functions in DNA replication and the base excision repair process. Mutations in [LIG1](#) that lead to DNA ligase I deficiency result in immunodeficiency and increased sensitivity to DNA-damaging agents. [provided by RefSeq]

Other DNA ligase I

Designations:

Gene Pathway

[Base excision repair](#) [DNA replication](#) [Mismatch repair](#) [Nucleotide excision repair](#)

Related Disease

[Adenocarcinoma](#) [Ataxia telangiectasia](#) [Brain Neoplasms](#) [Breast cancer](#) [Breast Neoplasms](#) [Carcinoma, Small Cell](#) [Carcinoma, Squamous Cell](#) [Cardiovascular Diseases](#) [Colorectal Neoplasms](#) [Diabetes Mellitus, Type 2](#) [DNA Damage](#) [Edema](#) [Esophageal Neoplasms](#) [Genetic Predisposition to Disease](#) [Glioma](#) [Graft vs Host Disease](#) [Head and Neck Neoplasms](#) [Hematologic Diseases](#) [Hodgkin Disease](#)

... see more