



SZABO SCANDIC

Part of Europa Biosite

Produktinformation



Forschungsprodukte & Biochemikalien



Zellkultur & Verbrauchsmaterial



Diagnostik & molekulare Diagnostik



Laborgeräte & Service

Weitere Information auf den folgenden Seiten!
See the following pages for more information!



Lieferung & Zahlungsart

siehe unsere [Liefer- und Versandbedingungen](#)

Zuschläge

- Mindermengenzuschlag
- Trockeneiszuschlag
- Gefahrgutzuschlag
- Expressversand

SZABO-SCANDIC HandelsgmbH

Quellenstraße 110, A-1100 Wien

T. +43(0)1 489 3961-0

F. +43(0)1 489 3961-7

mail@szabo-scandic.com

www.szabo-scandic.com

[linkedin.com/company/szaboscandic](https://www.linkedin.com/company/szaboscandic) 

LIG3 polyclonal antibody (A01)

Catalog # : H00003980-A01

規格 : [50 uL]

List All

Specification

Product Description: Mouse polyclonal antibody raised against a partial recombinant LIG3.

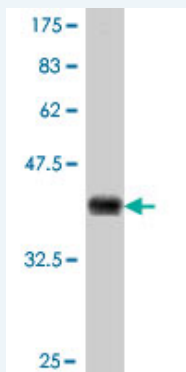
Immunogen: LIG3 (NP_039269, 823 a.a. ~ 922 a.a) partial recombinant protein with GST tag.

Sequence: TKSSPVKVG EK RKA ADE T L C Q T K V L L D I F T G V R L Y L P P S T P D F S R L R R Y F V A F D G D L V Q E F D M T S A T H V L G S R D K N P A A Q Q V S P E W W A C I R K R R L V A P C

Host: Mouse

Reactivity: Human

Quality Control Testing: Antibody Reactive Against Recombinant Protein.



Western Blot detection against Immunogen (37.11 kDa) .

Storage Buffer: 50 % glycerol

Storage Instruction: Store at -20°C or lower. Aliquot to avoid repeated freezing and thawing.

MSDS: [Download](#)

Datasheet: [Download](#)

Applications

Western Blot (Recombinant protein)

[Protocol Download](#)

ELISA

Gene Information

Entrez GeneID: [3980](#)

GeneBank Accession#: [NM_013975](#)

Protein Accession#: [NP_039269](#)

Gene Name: LIG3

Gene Alias: LIG2

Gene Description: ligase III, DNA, ATP-dependent

Omim ID: [600940](#)

Gene Ontology: [Hyperlink](#)

Gene Summary: This gene is a member of the DNA ligase family. Each member of this family encodes a protein that catalyzes the joining of DNA ends but they each have a distinct role in DNA metabolism. The protein encoded by this gene is involved in excision repair and is located in both the mitochondria and nucleus, with translation initiation from the upstream start codon allowing for transport to the mitochondria and translation initiation from a downstream start codon allowing for transport to the nucleus. Additionally, alternate transcriptional splice variants, encoding different isoforms, have been characterized. [provided by RefSeq]

Other Designations: ligase II, DNA, ATP-dependent, polydeoxyribonucleotide synthase

Gene Pathway

[Base excision repair](#)

Related Disease

[Adenocarcinoma](#) [Arrhythmias](#) [Cardiac Ataxia telangiectasia](#) [Breast cancer](#)
[Breast Neoplasms](#) [Carcinoma, Non-Small-Cell Lung](#) [Carcinoma, Squamous Cell](#)
[Colorectal Neoplasms](#) [Death, Sudden, Cardiac](#) [DNA Damage](#) [Esophageal Neoplasms](#)
[Genetic Predisposition to Disease](#) [Graft vs Host Disease](#) [Head and Neck Neoplasms](#)
[Hematologic Diseases](#) [Hodgkin Disease](#) [Kidney Failure, Chronic](#) [Laryngeal Neoplasms](#)
[Lung Neoplasms](#)

... see more