



# SZABO SCANDIC

Part of Europa Biosite

## Produktinformation



Forschungsprodukte & Biochemikalien



Zellkultur & Verbrauchsmaterial



Diagnostik & molekulare Diagnostik



Laborgeräte & Service

Weitere Information auf den folgenden Seiten!  
See the following pages for more information!



### Lieferung & Zahlungsart

siehe unsere [Liefer- und Versandbedingungen](#)

### Zuschläge

- Mindermengenzuschlag
- Trockeneiszuschlag
- Gefahrgutzuschlag
- Expressversand

### SZABO-SCANDIC HandelsgmbH

Quellenstraße 110, A-1100 Wien

T. +43(0)1 489 3961-0

F. +43(0)1 489 3961-7

[mail@szabo-scandic.com](mailto:mail@szabo-scandic.com)

[www.szabo-scandic.com](http://www.szabo-scandic.com)

[linkedin.com/company/szaboscandic](https://www.linkedin.com/company/szaboscandic) 

## LIG4 monoclonal antibody (M02), clone 2D2

Catalog # : H00003981-M02

規格 : [ 100 ug ]

[List All](#)

### Specification

**Product Description:** Mouse monoclonal antibody raised against a partial recombinant LIG4.

**Immunogen:** LIG4 (AAH37491, 802 a.a. ~ 911 a.a) partial recombinant protein with GST tag. MW of the GST tag alone is 26 KDa.

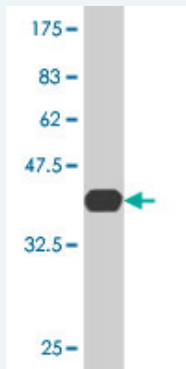
**Sequence:** RYSWDCSPLSMFRRHTVYLDYSYAVINDLSTKNEGTRLAIKALELRFHGAK  
VVSCLAEGVSHVIIGEDHSRVADFKAFRRTFKRKFILKESWVTDSIDKCE  
LQEENQYLI

**Host:** Mouse

**Reactivity:** Human

**Isotype:** IgG2a Kappa

**Quality Control Testing:** Antibody Reactive Against Recombinant Protein.



Western Blot detection against Immunogen (37.73 KDa) .

**Storage Buffer:** In 1x PBS, pH 7.4

**Storage Instruction:** Store at -20°C or lower. Aliquot to avoid repeated freezing and thawing.

**MSDS:** [Download](#)

**Datasheet:** [Download](#)

### Applications

**Western Blot (Recombinant protein)**

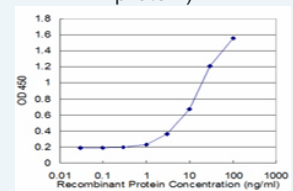
[Protocol Download](#)

**Sandwich ELISA (Recombinant protein)**

### Application Image

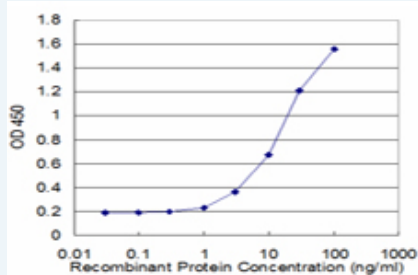
Western Blot (Recombinant protein)

Sandwich ELISA (Recombinant protein)



[enlarge](#)

ELISA



Detection limit for recombinant GST tagged LIG4 is approximately 1ng/ml as a capture antibody.

 [Protocol Download](#)

## ELISA

### Gene Information

Entrez GeneID: [3981](#)

GeneBank [BC037491](#)

Accession#:

Protein [AAH37491](#)

Accession#:

Gene Name: LIG4

Gene Alias: -

Gene Description: ligase IV, DNA, ATP-dependent

Omim ID: [254500](#), [601837](#), [606593](#)

Gene Ontology: [Hyperlink](#)

**Gene Summary:** The protein encoded by this gene is a DNA ligase that joins single-strand breaks in a double-stranded polydeoxynucleotide in an ATP-dependent reaction. This protein is essential for V(D)J recombination and DNA double-strand break (DSB) repair through nonhomologous end joining (NHEJ). This protein forms a complex with the X-ray repair cross complementing protein 4 (XRCC4), and further interacts with the DNA-dependent protein kinase (DNA-PK). Both XRCC4 and DNA-PK are known to be required for NHEJ. The crystal structure of the complex formed by this protein and XRCC4 has been resolved. Defects in this gene are the cause of LIG4 syndrome. Alternatively spliced transcript variants encoding the same protein have been observed. [provided by RefSeq]

**Other Designations:** DNA joinase, DNA ligase IV, DNA repair enzyme, polydeoxyribonucleotide synthase [ATP] 4, polynucleotide ligase, sealase

### Gene Pathway

[Non-homologous end-joining](#)

### Related Disease

[Adenocarcinoma](#) [Ascariasis](#) [Asthma](#) [Asthma](#) [Ataxia telangiectasia](#) [Brain Neoplasms](#) [Breast cancer](#) [Breast Neoplasms](#) [Carcinoma, Basal Cell](#) [Carcinoma, Non-Small-Cell Lung](#) [Carcinoma, Papillary](#) [Carcinoma, Squamous Cell](#) [Colorectal Neoplasms](#) [DNA Damage](#) [Esophageal Neoplasms](#) [Genetic Predisposition to Disease](#) [Genomic Instability](#) [Glioma](#) [Head and Neck Neoplasms](#)

... see more

---

---

[服務條款](#) | [隱私權政策](#) | [著作及商標](#) | [網站地圖](#)

©2016 亞諾法生技股份有限公司 Abnova Corporation. 版權所有.