



SZABO SCANDIC

Part of Europa Biosite

Produktinformation



Forschungsprodukte & Biochemikalien



Zellkultur & Verbrauchsmaterial



Diagnostik & molekulare Diagnostik



Laborgeräte & Service

Weitere Information auf den folgenden Seiten!
See the following pages for more information!



Lieferung & Zahlungsart

siehe unsere [Liefer- und Versandbedingungen](#)

Zuschläge

- Mindermengenzuschlag
- Trockeneiszuschlag
- Gefahrgutzuschlag
- Expressversand

SZABO-SCANDIC HandelsgmbH

Quellenstraße 110, A-1100 Wien

T. +43(0)1 489 3961-0

F. +43(0)1 489 3961-7

mail@szabo-scandic.com

www.szabo-scandic.com

[linkedin.com/company/szaboscandic](https://www.linkedin.com/company/szaboscandic) 

ABLIM1 polyclonal antibody (A01)

Catalog # : H00003983-A01

規格 : [50 uL]

List All

Specification

Product Description: Mouse polyclonal antibody raised against a partial recombinant ABLIM1.

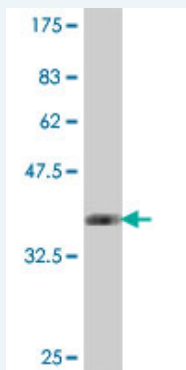
Immunogen: ABLIM1 (NP_002304, 637 a.a. ~ 736 a.a) partial recombinant protein with GST tag.

Sequence: RYDSPINSASHIPSSKTASLPGYGRNGLHRPVSTDFAQYNSYGDVSGGV
RDYQTLPDGHMPAMRMDRGVSMPNMLEPKIFPYEMLMVTNRGRNKILR
EVD

Host: Mouse

Reactivity: Human

Quality Control Testing: Antibody Reactive Against Recombinant Protein.



Western Blot detection against Immunogen (37.11 kDa) .

Storage Buffer: 50 % glycerol

Storage Instruction: Store at -20°C or lower. Aliquot to avoid repeated freezing and thawing.

MSDS: [Download](#)

Datasheet: [Download](#)

Applications

Western Blot (Recombinant protein)

[Protocol Download](#)

ELISA

Gene Information

Entrez GeneID: [3983](#)

GeneBank Accession#: [NM_002313](#)

Application Image

Western Blot (Recombinant protein)

ELISA

Protein Accession#: [NP_002304](#)

Gene Name: ABLIM1

Gene Alias: ABLIM,DKFZp781D0148,FLJ14564,KIAA0059,LIMAB1,LIMATIN,MGC1224

Gene Description: actin binding LIM protein 1

Omim ID: [602330](#)

Gene Ontology: [Hyperlink](#)

Gene Summary: This gene encodes a cytoskeletal LIM protein that binds to actin filaments via a domain that is homologous to erythrocyte dematin. LIM domains, found in over 60 proteins, play key roles in the regulation of developmental pathways. LIM domains also function as protein-binding interfaces, mediating specific protein-protein interactions. The protein encoded by this gene could mediate such interactions between actin filaments and cytoplasmic targets. Alternatively spliced transcript variants encoding different isoforms have been identified. [provided by RefSeq]

Other Designations: LIM actin-binding protein
1,OTTHUMP00000020530,OTTHUMP00000020531,OTTHUMP00000020536,actin-binding LIM protein 1,actin-binding double-zinc-finger protein

Gene Pathway

[Axon guidance](#)

Related Disease

[Alzheimer Disease](#) [Arthritis, Rheumatoid](#) [Bipolar Disorder](#) [Coronary Artery Disease](#)
[Crohn Disease](#) [Diabetes Mellitus, Type 1](#) [Diabetes Mellitus, Type 2](#)
[Genetic Predisposition to Disease](#) [Hypertension](#)

[服務條款](#) | [隱私權政策](#) | [著作及商標](#) | [網站地圖](#)

©2016 亞諾法生技股份有限公司 Abnova Corporation. 版權所有.