



# SZABO SCANDIC

Part of Europa Biosite

## Produktinformation



Forschungsprodukte & Biochemikalien



Zellkultur & Verbrauchsmaterial



Diagnostik & molekulare Diagnostik



Laborgeräte & Service

Weitere Information auf den folgenden Seiten!  
See the following pages for more information!



### Lieferung & Zahlungsart

siehe unsere [Liefer- und Versandbedingungen](#)

### Zuschläge

- Mindermengenzuschlag
- Trockeneiszuschlag
- Gefahrgutzuschlag
- Expressversand

### SZABO-SCANDIC HandelsgmbH

Quellenstraße 110, A-1100 Wien

T. +43(0)1 489 3961-0

F. +43(0)1 489 3961-7

[mail@szabo-scandic.com](mailto:mail@szabo-scandic.com)

[www.szabo-scandic.com](http://www.szabo-scandic.com)

[linkedin.com/company/szaboscandic](https://www.linkedin.com/company/szaboscandic) 

## ABLIM1 MaxPab mouse polyclonal antibody (B01) MaxPab®

Catalog # : H00003983-B01

規格 : [ 50 uL ]

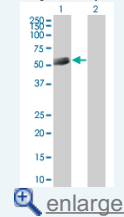
[List All](#)

### Specification

<b>Product Description:</b>	Mouse polyclonal antibody raised against a full-length human ABLIM1 protein.
<b>Immunogen:</b>	ABLIM1 (AAH02448.1, 1 a.a. ~ 401 a.a) full-length human protein.
<b>Sequence:</b>	MFTEGEEMYLQGSTVWHPDCKQSTKTEEKLRAKVDNEILDYKDAAIPK VKAIYDIERPDLITYEPFYTSGYDDKQERQSLGESPRTLSPTPSAEGYQD VRDRMIHRSTSQGSINSPVYSRHSYPTTSRSPQHFHRPDQGINIYRKPP YKQHAALAAQSKSSEDIKFSKFPAAQAPDPSETPKIETDHWPGPPSF AVVGPDMKRRSSGREEDDEELLRRRQLQEEQLMKLNSGLGQLILKEEMEK ESRERSLLASRYDSPINSASHIPSSKTASLPGYGRNGLHRPVSTDF AQYNSYGDVSGGVVDYQTLDPGHMPAMRMDRGVSMNMLEPKIFPYEMLM VTNRGRNKILREVDRTLRERHLAPEVFREIFGMSIQEFDRLPLWRRNDMK KKAKLF
<b>Host:</b>	Mouse
<b>Reactivity:</b>	Human
<b>Quality Control Testing:</b>	Antibody reactive against mammalian transfected lysate.
<b>Storage Buffer:</b>	No additive
<b>Storage Instruction:</b>	Store at -20°C or lower. Aliquot to avoid repeated freezing and thawing.
<b>Note:</b>	For IHC and IF applications, antibody purification with Protein A will be needed prior to use.
<b>MSDS:</b>	<a href="#">Download</a>
<b>Datasheet:</b>	<a href="#">Download</a>

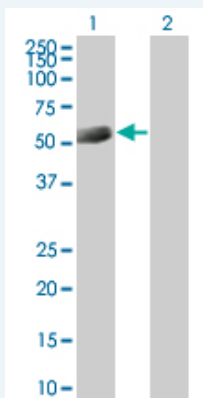
### Application Image

Western Blot (Transfected lysate)



### Applications

Western Blot (Transfected lysate)



Western Blot analysis of ABLIM1 expression in transfected 293T cell line (H00003983-T01) by ABLIM1 MaxPab polyclonal antibody.

Lane 1: ABLIM1 transfected lysate(44.11 KDa).  
Lane 2: Non-transfected lysate.

 [Protocol Download](#)

---

## Gene Information

---

**Entrez GeneID:** [3983](#)

**GeneBank  
Accession#:** [BC002448.2](#)

**Protein  
Accession#:** [AAH02448.1](#)

**Gene Name:** ABLIM1

**Gene Alias:** ABLIM,DKFZp781D0148,FLJ14564,KIAA0059,LIMAB1,LIMATIN,MGC1224

**Gene  
Description:** actin binding LIM protein 1

**Omim ID:** [602330](#)

**Gene Ontology:** [Hyperlink](#)

**Gene Summary:** This gene encodes a cytoskeletal LIM protein that binds to actin filaments via a domain that is homologous to erythrocyte dematin. LIM domains, found in over 60 proteins, play key roles in the regulation of developmental pathways. LIM domains also function as protein-binding interfaces, mediating specific protein-protein interactions. The protein encoded by this gene could mediate such interactions between actin filaments and cytoplasmic targets. Alternatively spliced transcript variants encoding different isoforms have been identified. [provided by RefSeq]

**Other  
Designations:** LIM actin-binding protein  
1,OTTHUMP00000020530,OTTHUMP00000020531,OTTHUMP00000020536,actin-binding LIM protein 1,actin-binding double-zinc-finger protein

---

## Gene Pathway

---

[Axon guidance](#)

---

## Related Disease

---

[Alzheimer Disease](#) [Arthritis](#) [Rheumatoid](#) [Bipolar Disorder](#) [Coronary Artery Disease](#)  
[Crohn Disease](#) [Diabetes Mellitus, Type 1](#) [Diabetes Mellitus, Type 2](#)  
[Genetic Predisposition to Disease](#) [Hypertension](#)

---

[服務條款](#) | [隱私權政策](#) | [著作及商標](#) | [網站地圖](#)

©2016 亞諾法生技股份有限公司 Abnova Corporation. 版權所有.