



SZABO SCANDIC

Part of Europa Biosite

Produktinformation



Forschungsprodukte & Biochemikalien



Zellkultur & Verbrauchsmaterial



Diagnostik & molekulare Diagnostik



Laborgeräte & Service

Weitere Information auf den folgenden Seiten!
See the following pages for more information!



Lieferung & Zahlungsart

siehe unsere [Liefer- und Versandbedingungen](#)

Zuschläge

- Mindermengenzuschlag
- Trockeneiszuschlag
- Gefahrgutzuschlag
- Expressversand

SZABO-SCANDIC HandelsgmbH

Quellenstraße 110, A-1100 Wien

T. +43(0)1 489 3961-0

F. +43(0)1 489 3961-7

mail@szabo-scandic.com

www.szabo-scandic.com

[linkedin.com/company/szaboscandic](https://www.linkedin.com/company/szaboscandic) 

ABLIM1 purified MaxPab mouse polyclonal antibody (B01P) MaxPab®

Catalog # : H00003983-B01P

規格 : [50 ug]

[List All](#)

Specification

Product Description: Mouse polyclonal antibody raised against a full-length human ABLIM1 protein.

Immunogen: ABLIM1 (AAH02448.1, 1 a.a. ~ 401 a.a) full-length human protein.

Sequence:
 MFTEGEEMYLQGSTVWHPDCKQSTKTEEKLRAKVDNEILDYKDAAIPK
 VKAIYDIERPDLITYEPFYTSYGYDDKQERQSLGESPRTLSPTPSAEGYQD
 VRDRMIHRSTSQGSINSPVYSRHSYPTTSRSPQHFHRPDQGINIYRKPP
 YKQHAALAAQSKSSEDIKFSKFPAAQAPDPSETPKIETDHWPGPPSF
 AVVGPDMKRRSSGREEDDEELLRRRQLQEEQLMKLNSGLGQLILKEEMEK
 ESRERSSLLASRYDSPINSASHIPSSKTASLPGYGRNGLHRPVSTDF
 AQYNSYGDVSGGVVDYQTLDPDGHMPAMRMDRGVSMNMLEPKIFPYEMLM
 VTNRGRNKILREVDRTLRERHLAPEVFRIFGMSIQEFDRLPLWRRNDMK
 KKAKLF

Host: Mouse

Reactivity: Human

Quality Control Testing: Antibody reactive against mammalian transfected lysate.

Storage Buffer: In 1x PBS, pH 7.4

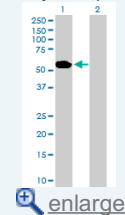
Storage Instruction: Store at -20°C or lower. Aliquot to avoid repeated freezing and thawing.

MSDS: [Download](#)

Datasheet: [Download](#)

Application Image

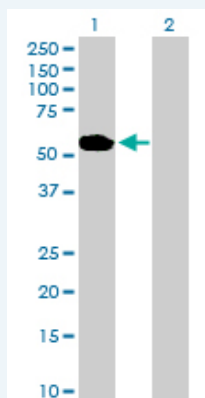
Western Blot (Transfected lysate)



[enlarge](#)

Applications

Western Blot (Transfected lysate)



Western Blot analysis of ABLIM1 expression in transfected 293T cell line (H00003983-T01) by ABLIM1 MaxPab polyclonal antibody.

Lane 1: ABLIM1 transfected lysate(44.11 KDa).

Lane 2: Non-transfected lysate.

Gene Information

Entrez GeneID: [3983](#)

GeneBank Accession#: [BC002448.2](#)

Protein Accession#: [AAH02448.1](#)

Gene Name: ABLIM1

Gene Alias: ABLIM,DKFZp781D0148,FLJ14564,KIAA0059,LIMAB1,LIMATIN,MGC1224

Gene Description: actin binding LIM protein 1

Omim ID: [602330](#)

Gene Ontology: [Hyperlink](#)

Gene Summary: This gene encodes a cytoskeletal LIM protein that binds to actin filaments via a domain that is homologous to erythrocyte dematin. LIM domains, found in over 60 proteins, play key roles in the regulation of developmental pathways. LIM domains also function as protein-binding interfaces, mediating specific protein-protein interactions. The protein encoded by this gene could mediate such interactions between actin filaments and cytoplasmic targets. Alternatively spliced transcript variants encoding different isoforms have been identified. [provided by RefSeq]

Other Designations: LIM actin-binding protein
1,OTTHUMP00000020530,OTTHUMP00000020531,OTTHUMP00000020536,actin-binding LIM protein 1,actin-binding double-zinc-finger protein

Gene Pathway

[Axon guidance](#)

Related Disease

[Alzheimer Disease](#) [Arthritis](#) [Rheumatoid](#) [Bipolar Disorder](#) [Coronary Artery Disease](#)
[Crohn Disease](#) [Diabetes Mellitus, Type 1](#) [Diabetes Mellitus, Type 2](#)
[Genetic Predisposition to Disease](#) [Hypertension](#)