



SZABO SCANDIC

Part of Europa Biosite

Produktinformation



Forschungsprodukte & Biochemikalien



Zellkultur & Verbrauchsmaterial



Diagnostik & molekulare Diagnostik



Laborgeräte & Service

Weitere Information auf den folgenden Seiten!
See the following pages for more information!



Lieferung & Zahlungsart

siehe unsere [Liefer- und Versandbedingungen](#)

Zuschläge

- Mindermengenzuschlag
- Trockeneiszuschlag
- Gefahrgutzuschlag
- Expressversand

SZABO-SCANDIC HandelsgmbH

Quellenstraße 110, A-1100 Wien

T. +43(0)1 489 3961-0

F. +43(0)1 489 3961-7

mail@szabo-scandic.com

www.szabo-scandic.com

[linkedin.com/company/szaboscandic](https://www.linkedin.com/company/szaboscandic) 

ABLIM1 monoclonal antibody (M06), clone 2C6

Catalog # : H00003983-M06

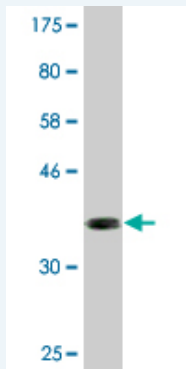
規格 : [100 ug]

List All

Specification

Product Description:	Mouse monoclonal antibody raised against a partial recombinant ABLIM1.
Immunogen:	ABLIM1 (NP_002304, 637 a.a. ~ 736 a.a) partial recombinant protein with GST tag. MW of the GST tag alone is 26 KDa.
Sequence:	RYDSPINSASHIPSSKTASLPGYGRNGLHRPVSTDFAQYNSYGDVSGGV RDYQTLPDGHPAMRMDRGVSMPNMLEPKIFPYEMLMVTNRGRNKILR EVD
Host:	Mouse
Reactivity:	Human
Isotype:	IgG2a Kappa

Quality Control Testing: Antibody Reactive Against Recombinant Protein.



Western Blot detection against Immunogen (36.74 KDa) .

Storage Buffer: In 1x PBS, pH 7.4

Storage Instruction: Store at -20°C or lower. Aliquot to avoid repeated freezing and thawing.

MSDS: [Download](#)

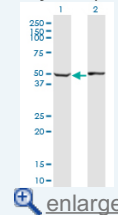
Datasheet: [Download](#)

Applications

Western Blot (Transfected lysate)

Application Image

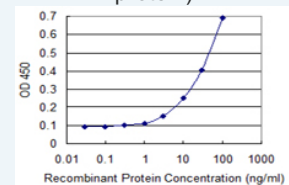
Western Blot (Transfected lysate)



[enlarge](#)

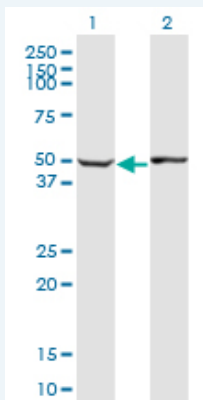
Western Blot (Recombinant protein)

Sandwich ELISA (Recombinant protein)



[enlarge](#)

ELISA



Western Blot analysis of ABLIM1 expression in transfected 293T cell line by ABLIM1 monoclonal antibody (M06), clone 2C6.

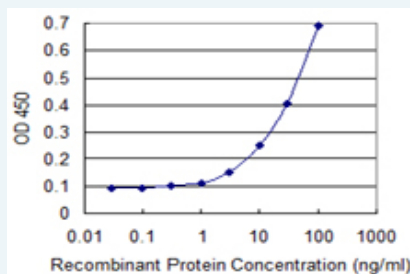
Lane 1: ABLIM1 transfected lysate(46.1 kDa).
Lane 2: Non-transfected lysate.

[Protocol Download](#)

Western Blot (Recombinant protein)

[Protocol Download](#)

Sandwich ELISA (Recombinant protein)



Detection limit for recombinant GST tagged ABLIM1 is 1 ng/ml as a capture antibody.

[Protocol Download](#)

ELISA

Gene Information

Entrez GeneID: [3983](#)

GeneBank [NM_002313](#)

Accession#:

Protein [NP_002304](#)

Accession#:

Gene Name: ABLIM1

Gene Alias: ABLIM,DKFZp781D0148,FLJ14564,KIAA0059,LIMAB1,LIMATIN,MGC1224

Gene Description: actin binding LIM protein 1

Omim ID: [602330](#)

Gene Ontology: [Hyperlink](#)

Gene Summary: This gene encodes a cytoskeletal LIM protein that binds to actin filaments via a domain that is homologous to erythrocyte dematin. LIM domains, found in over 60 proteins, play key roles in the regulation of developmental pathways. LIM domains also function as protein-binding interfaces, mediating specific protein-protein interactions. The protein

encoded by this gene could mediate such interactions between actin filaments and cytoplasmic targets. Alternatively spliced transcript variants encoding different isoforms have been identified. [provided by RefSeq]

Other LIM actin-binding protein
Designations: 1,OTTHUMP00000020530,OTTHUMP00000020531,OTTHUMP00000020536,actin-binding LIM protein 1,actin-binding double-zinc-finger protein

Gene Pathway

[Axon guidance](#)

Related Disease

[Alzheimer Disease](#) [Arthritis, Rheumatoid](#) [Bipolar Disorder](#) [Coronary Artery Disease](#)
[Crohn Disease](#) [Diabetes Mellitus, Type 1](#) [Diabetes Mellitus, Type 2](#)
[Genetic Predisposition to Disease](#) [Hypertension](#)

[服務條款](#) | [隱私權政策](#) | [著作及商標](#) | [網站地圖](#)

©2016 亞諾法生技股份有限公司 Abnova Corporation. 版權所有.