



# SZABO SCANDIC

Part of Europa Biosite

## Produktinformation



Forschungsprodukte & Biochemikalien



Zellkultur & Verbrauchsmaterial



Diagnostik & molekulare Diagnostik



Laborgeräte & Service

Weitere Information auf den folgenden Seiten!  
See the following pages for more information!



### Lieferung & Zahlungsart

siehe unsere [Liefer- und Versandbedingungen](#)

### Zuschläge

- Mindermengenzuschlag
- Trockeneiszuschlag
- Gefahrgutzuschlag
- Expressversand

### SZABO-SCANDIC HandelsgmbH

Quellenstraße 110, A-1100 Wien

T. +43(0)1 489 3961-0

F. +43(0)1 489 3961-7

[mail@szabo-scandic.com](mailto:mail@szabo-scandic.com)

[www.szabo-scandic.com](http://www.szabo-scandic.com)

[linkedin.com/company/szaboscandic](https://www.linkedin.com/company/szaboscandic) 

## LIMK1 MaxPab mouse polyclonal antibody (B01) MaxPab®

Catalog # : H00003984-B01

規格 : [ 50 uL ]

[List All](#)

### Specification

**Product Description:** Mouse polyclonal antibody raised against a full-length human LIMK1 protein.

**Immunogen:** LIMK1 (AAI52983.1, 1 a.a. ~ 647 a.a) full-length human protein.

**Sequence:**  
 MRLTLLCCTWREERMGEEGSELPVCASCGQRIYDGQYLQALNADWHA  
 DCFRCCDCSASLSHQYYEKDGLFCCKDYWARYGESCHGCSEQITKGL  
 VMVAGELKYHPECFICLTCGTFIGDGDYTLVEHSKLYCGHCYYQTWV  
 PVIEQILPDSFGSHLPHTVTLVSIASSHGKRGLSVSDPPHGPPGCGTEH  
 SHTVRVQGVDPGCMSPDVKNSIHVGDRILEINGTPIRNVPLDEIDLLIQETS  
 RLLQLTLEHDPHDTLGHGLGPETSPLSSPAYTPSGEAGSSARQKPVLR  
 CSIDRSPGAGSLGSPASQRKDLGRSESLRVVCRPHRIFRPSDLIHGEVLG  
 KGCFGQAIKVTHRETGEVMMKELIRFDEETQRTFLKEVKVMRCLEHPN  
 VLKFIGVLYKDKRLNFITEYIKGGTLRGIKSMDSQYPWSQRVSAKDIASG  
 MAYLHSMNIIHRDLNSHNCLVRENKNVVADFGLARLMVDEKTQPEGLRS  
 LKKPDRKKRYTVVGNPYWMAPEMINGRSYDEKVDVFSFGLCEIIGRVN  
 ADPDYLPRTMDFGLNVRGFLDRYCPCPPSFFPITVRCCDLDPKRP  
 FVKLEHWLETLRMHLAGHLPLGPQLEQLDRGFWETYYRRGESGLPAHPE  
 VPD

**Host:** Mouse

**Reactivity:** Human

**Quality Control Testing:** Antibody reactive against mammalian transfected lysate.

**Storage Buffer:** No additive

**Storage Instruction:** Store at -20°C or lower. Aliquot to avoid repeated freezing and thawing.

**Note:** For IHC and IF applications, antibody purification with Protein A will be needed prior to use.

**MSDS:**  [Download](#)

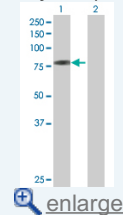
**Datasheet:**  [Download](#)

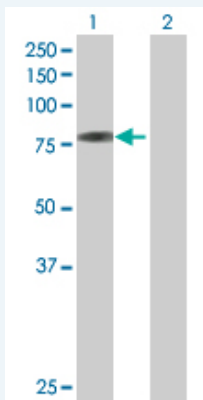
### Applications

**Western Blot (Transfected lysate)**

### Application Image

Western Blot (Transfected lysate)





Western Blot analysis of LIMK1 expression in transfected 293T cell line (H00003984-T01) by LIMK1 MaxPab polyclonal antibody.

Lane 1: LIMK1 transfected lysate(71.17 KDa).

Lane 2: Non-transfected lysate.

 Protocol Download

## Gene Information

**Entrez GeneID:** [3984](#)

**GeneBank** [BC152982](#)

**Accession#:**

**Protein** [AAI52983.1](#)

**Accession#:**

**Gene Name:** LIMK1

**Gene Alias:** LIMK

**Gene** LIM domain kinase 1

**Description:**

**Omim ID:** [601329](#)

**Gene Ontology:** [Hyperlink](#)

**Gene Summary:** There are approximately 40 known eukaryotic LIM proteins, so named for the LIM domains they contain. LIM domains are highly conserved cysteine-rich structures containing 2 zinc fingers. Although zinc fingers usually function by binding to DNA or RNA, the LIM motif probably mediates protein-protein interactions. LIM kinase-1 and LIM kinase-2 belong to a small subfamily with a unique combination of 2 N-terminal LIM motifs and a C-terminal protein kinase domain. LIMK1 is likely to be a component of an intracellular signaling pathway and may be involved in brain development. LIMK1 hemizyosity is implicated in the impaired visuospatial constructive cognition of Williams syndrome. [provided by RefSeq]

**Other** LIM motif-containing protein kinase,OTTHUMP00000025066

**Designations:**

## Gene Pathway

[Axon guidance](#) [Fc gamma R-mediated phagocytosis](#) [Regulation of actin cytoskeleton](#)

## Related Disease

[Brain Ischemia](#) [Cerebral Hemorrhage](#) [Cleft Lip](#) [Cleft Palate](#)

[Genetic Predisposition to Disease](#) [Intracranial Aneurysm](#) [Metabolic Syndrome X](#)

[Renal Insufficiency](#), [Chronic Stroke](#) [Werner syndrome](#)

