



SZABO SCANDIC

Part of Europa Biosite

Produktinformation



Forschungsprodukte & Biochemikalien



Zellkultur & Verbrauchsmaterial



Diagnostik & molekulare Diagnostik



Laborgeräte & Service

Weitere Information auf den folgenden Seiten!
See the following pages for more information!



Lieferung & Zahlungsart

siehe unsere [Liefer- und Versandbedingungen](#)

Zuschläge

- Mindermengenzuschlag
- Trockeneiszuschlag
- Gefahrgutzuschlag
- Expressversand

SZABO-SCANDIC HandelsgmbH

Quellenstraße 110, A-1100 Wien

T. +43(0)1 489 3961-0

F. +43(0)1 489 3961-7

mail@szabo-scandic.com

www.szabo-scandic.com

[linkedin.com/company/szaboscandic](https://www.linkedin.com/company/szaboscandic) 

LIMK1 purified MaxPab rabbit polyclonal antibody (D01P) MaxPab®

Catalog # : H00003984-D01P

規格 : [100 ug]

[List All](#)

Specification

Product Description: Rabbit polyclonal antibody raised against a full-length human LIMK1 protein.

Immunogen: LIMK1 (AAI52983.1, 1 a.a. ~ 647 a.a) full-length human protein.

Sequence:
 MRLTLLCCTWREERMGEEGSELPVCASCGQRIYDGQYLQALNADWHA
 DCFRCCDCSASLSHQYYEKDGLFCCKDYWARYGESCHGCSEQITKGL
 VMVAGELKYHPECFICLTCGTFIGDGDYTLVEHSKLYCGHCYYQTWV
 PVIEQILPDSFGSHLPHTVTLVSIASSHGKRGLSVSDPPHGPPGCGTEH
 SHTVRVQGVDPGCMSPDVKNSIHVGDRILEINGTPIRNVPLDEIDLIQETS
 RLLQLTLEHDPHDTLGHGLGPETSPSSPAYTPSGEAGSSARQKPVLS
 CSIDRSPGAGSLGSPASQRKDLGRSESLRVVCRPHRIFRPSDLIHGEVLG
 KGCFGQAIKVTHRETGEVMMKELIRFDEETQRTFLKEVKVMRCLEHPN
 VLKFIGVLYKDKRLNFITEYIKGGTLRGIKSMDSQYPWSQRVSAKDIASG
 MAYLHSMNIIHRDLNSHNCLVRENKNVWADFGLARLMVDEKTQPEGLRS
 LKKPDRKKRYTVGNPYWMAPEMINGRSYDEKVDVFSFGVLCCEIIGRVN
 ADPDYLPRTMDFGLNVRGFLDRYCPPNCPSPFFPITVRCCDLDPKRP
 FVKLEHWLETLRMHLAGHLPLGPQLEQLDRGFWETYRRGESGLPAHPE
 VPD

Host: Rabbit

Reactivity: Human, Mouse

Quality Control Testing: Antibody reactive against mammalian transfected lysate.

Storage Buffer: In 1x PBS, pH 7.4

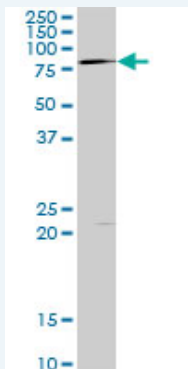
Storage Instruction: Store at -20°C or lower. Aliquot to avoid repeated freezing and thawing.

MSDS:  [Download](#)

Datasheet:  [Download](#)

Applications

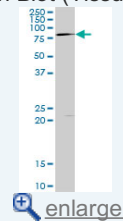
Western Blot (Tissue lysate)



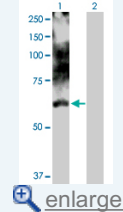
LIMK1 MaxPab rabbit polyclonal antibody. Western Blot analysis of LIMK1 expression in mouse brain.

Application Image

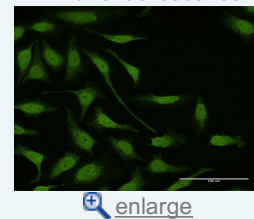
Western Blot (Tissue lysate)



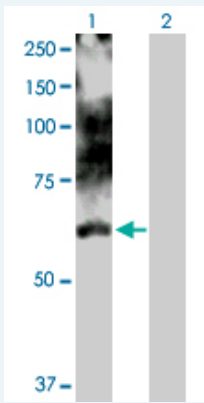
Western Blot (Transfected lysate)



Immunofluorescence



Western Blot (Transfected lysate)

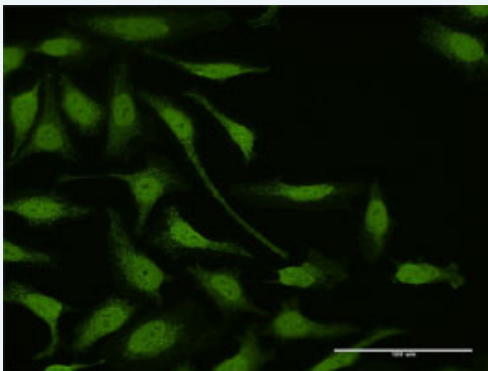



Western Blot analysis of LIMK1 expression in transfected 293T cell line ([H00003984-T01](#)) by LIMK1 MaxPab polyclonal antibody.

Lane 1: LIMK1 transfected lysate(71.17 KDa).

Lane 2: Non-transfected lysate.

Immunofluorescence



 enlarge this image

Immunofluorescence of purified MaxPab antibody to LIMK1 on HeLa cell. [antibody concentration 10 ug/ml]

Gene Information

Entrez GeneID: [3984](#)

GeneBank [BC152982](#)
Accession#:

Protein [AAI52983.1](#)
Accession#:

Gene Name: LIMK1

Gene Alias: LIMK

Gene Description: LIM domain kinase 1

Omim ID: [601329](#)

Gene Ontology: [Hyperlink](#)

Gene Summary: There are approximately 40 known eukaryotic LIM proteins, so named for the LIM domains they contain. LIM domains are highly conserved cysteine-rich structures containing 2 zinc fingers. Although zinc fingers usually function by binding to DNA or RNA, the LIM motif probably

mediates protein-protein interactions. LIM kinase-1 and LIM kinase-2 belong to a small subfamily with a unique combination of 2 N-terminal LIM motifs and a C-terminal protein kinase domain. LIMK1 is likely to be a component of an intracellular signaling pathway and may be involved in brain development. LIMK1 hemizyosity is implicated in the impaired visuospatial constructive cognition of Williams syndrome. [provided by RefSeq]

Other Designations: LIM motif-containing protein kinase, OTTHUMP00000025066

Gene Pathway

[Axon guidance](#) [Fc gamma R-mediated phagocytosis](#) [Regulation of actin cytoskeleton](#)

Related Disease

[Brain Ischemia](#) [Cerebral Hemorrhage](#) [Cleft Lip](#) [Cleft Palate](#)
[Genetic Predisposition to Disease](#) [Intracranial Aneurysm](#) [Metabolic Syndrome X](#)
[Renal Insufficiency](#) [Chronic Stroke](#) [Werner syndrome](#)

[服務條款](#) | [隱私權政策](#) | [著作及商標](#) | [網站地圖](#)

©2016 亞諾法生技股份有限公司 Abnova Corporation. 版權所有.