



# SZABO SCANDIC

Part of Europa Biosite

## Produktinformation



Forschungsprodukte & Biochemikalien



Zellkultur & Verbrauchsmaterial



Diagnostik & molekulare Diagnostik



Laborgeräte & Service

Weitere Information auf den folgenden Seiten!  
See the following pages for more information!



### Lieferung & Zahlungsart

siehe unsere [Liefer- und Versandbedingungen](#)

### Zuschläge

- Mindermengenzuschlag
- Trockeneiszuschlag
- Gefahrgutzuschlag
- Expressversand

### SZABO-SCANDIC HandelsgmbH

Quellenstraße 110, A-1100 Wien

T. +43(0)1 489 3961-0

F. +43(0)1 489 3961-7

[mail@szabo-scandic.com](mailto:mail@szabo-scandic.com)

[www.szabo-scandic.com](http://www.szabo-scandic.com)

[linkedin.com/company/szaboscandic](https://www.linkedin.com/company/szaboscandic) 

## LIMK1 monoclonal antibody (M01), clone 1A8

Catalog # : H00003984-M01

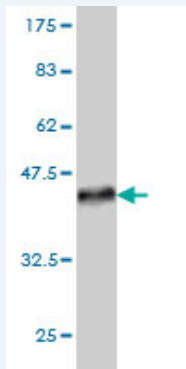
規格 : [ 100 ug ]

List All

### Specification

<b>Product Description:</b>	Mouse monoclonal antibody raised against a partial recombinant LIMK1.
<b>Immunogen:</b>	LIMK1 (NP_002305, 548 a.a. ~ 647 a.a) partial recombinant protein with GST tag. MW of the GST tag alone is 26 KDa.
<b>Sequence:</b>	ADPDYLPRTMDFGLNVRGFLDRYCPPNCPPSFFPITVRCCDLDPKRP FVKLEHWLETLRMHLAHLPLGPQLEQLDRGFWETYYRRGESGLPAHPE VPD
<b>Host:</b>	Mouse
<b>Reactivity:</b>	Human, Mouse, Rat
<b>Isotype:</b>	IgG2a Kappa

**Quality Control Testing:** Antibody Reactive Against Recombinant Protein.



Western Blot detection against Immunogen (36.74 KDa) .

**Storage Buffer:** In 1x PBS, pH 7.4

**Storage Instruction:** Store at -20°C or lower. Aliquot to avoid repeated freezing and thawing.

**MSDS:** [Download](#)

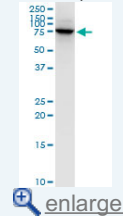
**Datasheet:** [Download](#)

### Applications

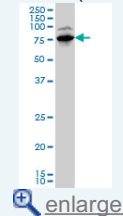
Western Blot (Cell lysate)

### Application Image

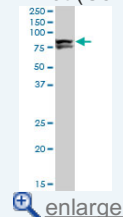
Western Blot (Cell lysate)



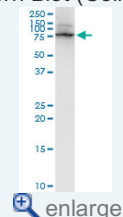
Western Blot (Cell lysate)



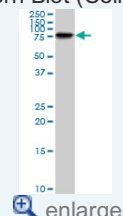
Western Blot (Cell lysate)



Western Blot (Cell lysate)

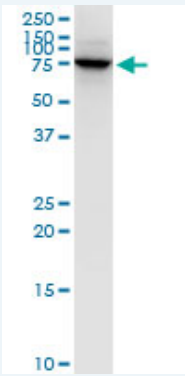


Western Blot (Cell lysate)



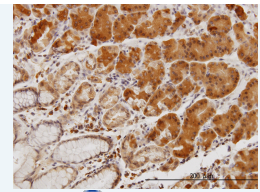
Western Blot (Recombinant protein)


Immunohistochemistry  
(Formalin/PFA-fixed paraffin-embedded sections)



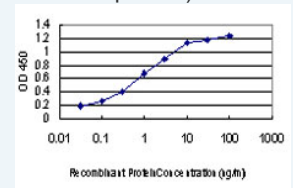
LIMK1 monoclonal antibody (M01), clone 1A8. Western Blot analysis of LIMK1 expression in PC-12(Cat # L012V1 ).


 [Protocol Download](#)



 [enlarge](#)

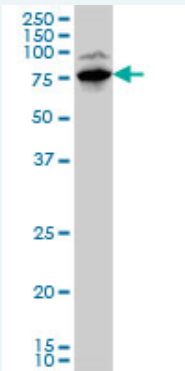
Sandwich ELISA (Recombinant protein)



 [enlarge](#)

ELISA

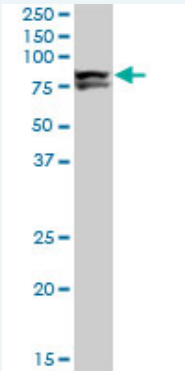
#### Western Blot (Cell lysate)



LIMK1 monoclonal antibody (M01), clone 1A8 Western Blot analysis of LIMK1 expression in HepG2 ( Cat # L019V1 ).

 [Protocol Download](#)

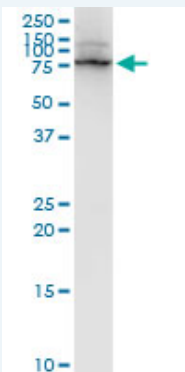
#### Western Blot (Cell lysate)



LIMK1 monoclonal antibody (M01), clone 1A8. Western Blot analysis of LIMK1 expression in SW-13 ( Cat # L005V1 ).

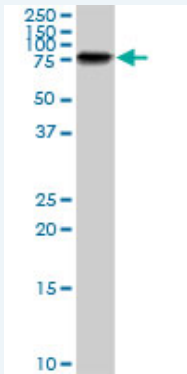
 [Protocol Download](#)

#### Western Blot (Cell lysate)



LIMK1 monoclonal antibody (M01), clone 1A8. Western Blot analysis of LIMK1 expression in Raw 264.7(Cat # L024V1 ).

### Western Blot (Cell lysate)



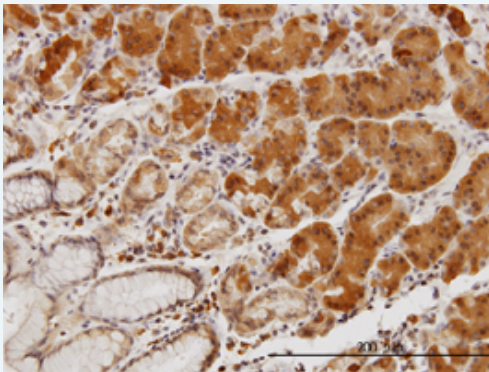
LIMK1 monoclonal antibody (M01), clone 1A8. Western Blot analysis of LIMK1 expression in NIH/3T3 ( Cat # L018V1 ).

 [Protocol Download](#)

### Western Blot (Recombinant protein)


 [Protocol Download](#)

### Immunohistochemistry (Formalin/PFA-fixed paraffin-embedded sections)

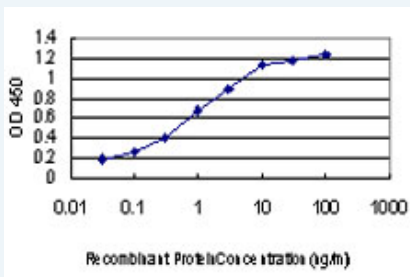


 [enlarge this image](#)

Immunoperoxidase of monoclonal antibody to LIMK1 on formalin-fixed paraffin-embedded human stomach. [antibody concentration 3 ug/ml]

 [Protocol Download](#)

### Sandwich ELISA (Recombinant protein)



Detection limit for recombinant GST tagged LIMK1 is approximately 0.03ng/ml as a capture antibody.

 [Protocol Download](#)

### ELISA

### Gene Information

Entrez GeneID: [3984](#)

GeneBank [NM\\_002314](#)  
Accession#:

Protein [NP\\_002305](#)  
Accession#:

**Gene Name:** LIMK1

**Gene Alias:** LIMK

**Gene Description:** LIM domain kinase 1

**Omim ID:** [601329](#)

**Gene Ontology:** [Hyperlink](#)

**Gene Summary:** There are approximately 40 known eukaryotic LIM proteins, so named for the LIM domains they contain. LIM domains are highly conserved cysteine-rich structures containing 2 zinc fingers. Although zinc fingers usually function by binding to DNA or RNA, the LIM motif probably mediates protein-protein interactions. LIM kinase-1 and LIM kinase-2 belong to a small subfamily with a unique combination of 2 N-terminal LIM motifs and a C-terminal protein kinase domain. LIMK1 is likely to be a component of an intracellular signaling pathway and may be involved in brain development. LIMK1 hemizyosity is implicated in the impaired visuospatial constructive cognition of Williams syndrome. [provided by RefSeq]

**Other Designations:** LIM motif-containing protein kinase,OTTHUMP0000025066

#### Gene Pathway

[Axon guidance](#) [Fc gamma R-mediated phagocytosis](#) [Regulation of actin cytoskeleton](#)

#### Related Disease

[Brain Ischemia](#) [Cerebral Hemorrhage](#) [Cleft Lip](#) [Cleft Palate](#)  
[Genetic Predisposition to Disease](#) [Intracranial Aneurysm](#) [Metabolic Syndrome X](#)  
[Renal Insufficiency](#) [Chronic Stroke](#) [Werner syndrome](#)

[服務條款](#) | [隱私權政策](#) | [著作及商標](#) | [網站地圖](#)

©2016 亞諾法生技股份有限公司 Abnova Corporation. 版權所有.