



SZABO SCANDIC

Part of Europa Biosite

Produktinformation



Forschungsprodukte & Biochemikalien



Zellkultur & Verbrauchsmaterial



Diagnostik & molekulare Diagnostik



Laborgeräte & Service

Weitere Information auf den folgenden Seiten!
See the following pages for more information!



Lieferung & Zahlungsart

siehe unsere [Liefer- und Versandbedingungen](#)

Zuschläge

- Mindermengenzuschlag
- Trockeneiszuschlag
- Gefahrgutzuschlag
- Expressversand

SZABO-SCANDIC HandelsgmbH

Quellenstraße 110, A-1100 Wien

T. +43(0)1 489 3961-0

F. +43(0)1 489 3961-7

mail@szabo-scandic.com

www.szabo-scandic.com

[linkedin.com/company/szaboscandic](https://www.linkedin.com/company/szaboscandic) 

LIMK1 monoclonal antibody (M02), clone 1B2

Catalog # : H00003984-M02

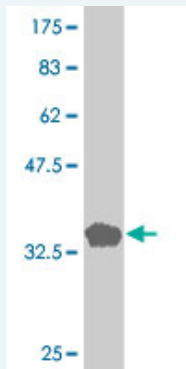
規格 : [50 ug]

[List All](#)

Specification

Product Description:	Mouse monoclonal antibody raised against a partial recombinant LIMK1.
Immunogen:	LIMK1 (NP_002305, 548 a.a. ~ 647 a.a) partial recombinant protein with GST tag. MW of the GST tag alone is 26 KDa.
Sequence:	ADPDYLPRTMDFGLNVRGFLDRYCPPNCPSPFFPITVRCCDLDPKRP FVKLEHWLETLRMHLAHLPLGPQLEQLDRGFWETRYRRGESGLPAHPE VPD
Host:	Mouse
Reactivity:	Human
Isotype:	IgG1 Kappa

Quality Control Testing: Antibody Reactive Against Recombinant Protein.



Western Blot detection against Immunogen (36.74 KDa) .

Storage Buffer: In 1x PBS, pH 7.4

Storage Instruction: Store at -20°C or lower. Aliquot to avoid repeated freezing and thawing.

MSDS: [Download](#)

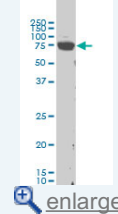
Datasheet: [Download](#)

Applications

Western Blot (Cell lysate)

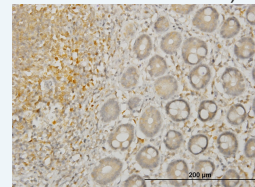
Application Image

Western Blot (Cell lysate)

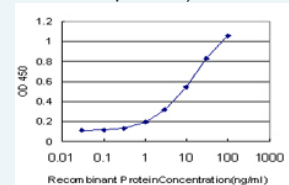


Western Blot (Recombinant protein)

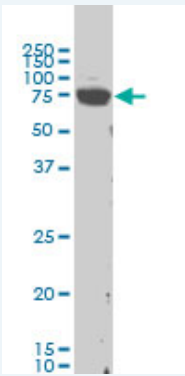
Immunohistochemistry (Formalin/PFA-fixed paraffin-embedded sections)



Sandwich ELISA (Recombinant protein)



ELISA



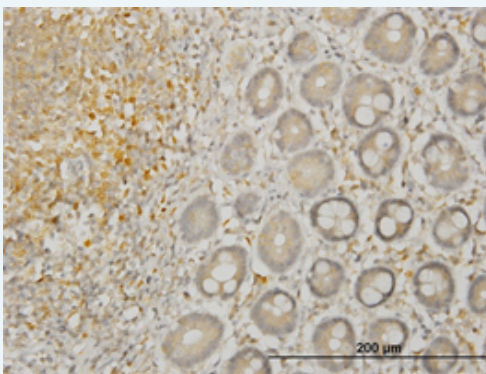
LIMK1 monoclonal antibody (M02), clone 1B2 Western Blot analysis of LIMK1 expression in HeLa S3 NE (Cat # L013V3).

[Protocol Download](#)

Western Blot (Recombinant protein)

[Protocol Download](#)

Immunohistochemistry (Formalin/PFA-fixed paraffin-embedded sections)

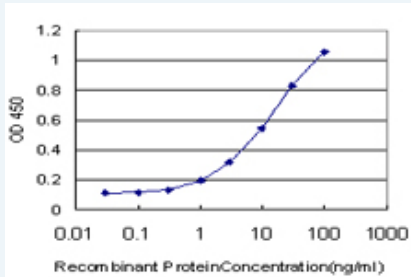


[enlarge this image](#)

Immunoperoxidase of monoclonal antibody to LIMK1 on formalin-fixed paraffin-embedded human colon. [antibody concentration 1.5 ug/ml]

[Protocol Download](#)

Sandwich ELISA (Recombinant protein)



Detection limit for recombinant GST tagged LIMK1 is approximately 0.3ng/ml as a capture antibody.

[Protocol Download](#)

ELISA

Gene Information

Entrez GeneID: [3984](#)

GeneBank [NM_002314](#)
Accession#:

Protein [NP_002305](#)
Accession#:

Gene Name: LIMK1

Gene Alias: LIMK

Gene LIM domain kinase 1

Description:

Omim ID: [601329](#)

Gene Ontology: [Hyperlink](#)

Gene Summary: There are approximately 40 known eukaryotic LIM proteins, so named for the LIM domains they contain. LIM domains are highly conserved cysteine-rich structures containing 2 zinc fingers. Although zinc fingers usually function by binding to DNA or RNA, the LIM motif probably mediates protein-protein interactions. LIM kinase-1 and LIM kinase-2 belong to a small subfamily with a unique combination of 2 N-terminal LIM motifs and a C-terminal protein kinase domain. LIMK1 is likely to be a component of an intracellular signaling pathway and may be involved in brain development. LIMK1 hemizyosity is implicated in the impaired visuospatial constructive cognition of Williams syndrome. [provided by RefSeq]

Other Designations: LIM motif-containing protein kinase,OTTHUMP0000025066

Gene Pathway

[Axon guidance](#) [Fc gamma R-mediated phagocytosis](#) [Regulation of actin cytoskeleton](#)

Related Disease

[Brain Ischemia](#) [Cerebral Hemorrhage](#) [Cleft Lip](#) [Cleft Palate](#)
[Genetic Predisposition to Disease](#) [Intracranial Aneurysm](#) [Metabolic Syndrome X](#)
[Renal Insufficiency](#) [Chronic Stroke](#) [Werner syndrome](#)

[服務條款](#) | [隱私權政策](#) | [著作及商標](#) | [網站地圖](#)

©2016 亞諾法生技股份有限公司 Abnova Corporation. 版權所有.