



SZABO SCANDIC

Part of Europa Biosite

Produktinformation



Forschungsprodukte & Biochemikalien



Zellkultur & Verbrauchsmaterial



Diagnostik & molekulare Diagnostik



Laborgeräte & Service

Weitere Information auf den folgenden Seiten!
See the following pages for more information!



Lieferung & Zahlungsart

siehe unsere [Liefer- und Versandbedingungen](#)

Zuschläge

- Mindermengenzuschlag
- Trockeneiszuschlag
- Gefahrgutzuschlag
- Expressversand

SZABO-SCANDIC HandelsgmbH

Quellenstraße 110, A-1100 Wien

T. +43(0)1 489 3961-0

F. +43(0)1 489 3961-7

mail@szabo-scandic.com

www.szabo-scandic.com

[linkedin.com/company/szaboscandic](https://www.linkedin.com/company/szaboscandic) 

LIMK1 monoclonal antibody (M03), clone 3D10

Catalog # : H00003984-M03

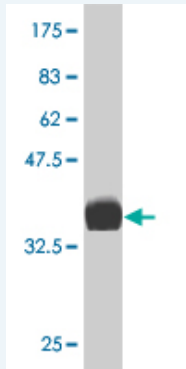
規格 : [100 ug]

[List All](#)

Specification

Product Description:	Mouse monoclonal antibody raised against a partial recombinant LIMK1.
Immunogen:	LIMK1 (NP_002305, 548 a.a. ~ 647 a.a) partial recombinant protein with GST tag. MW of the GST tag alone is 26 KDa.
Sequence:	ADPDYLPRTMDFGLNVRGFLDRYCPPNCPPSFFPITVRCCDLDPKRP FVKLEHWLETLRMHLAGHLPLGPQLEQLDRGFWETYRRGESGLPAHPE VPD
Host:	Mouse
Reactivity:	Human
Isotype:	IgG2a Kappa

Quality Control Testing: Antibody Reactive Against Recombinant Protein.



Western Blot detection against Immunogen (36.74 KDa) .

Storage Buffer: In 1x PBS, pH 7.4

Storage Instruction: Store at -20°C or lower. Aliquot to avoid repeated freezing and thawing.

MSDS: [Download](#)

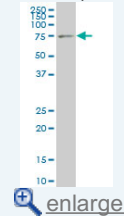
Datasheet: [Download](#)

Applications

Western Blot (Cell lysate)

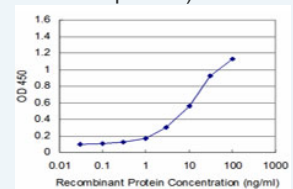
Application Image

Western Blot (Cell lysate)

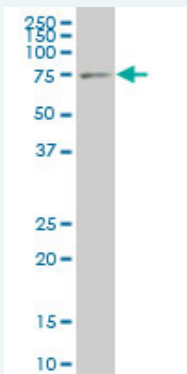


Western Blot (Recombinant protein)

Sandwich ELISA (Recombinant protein)



ELISA



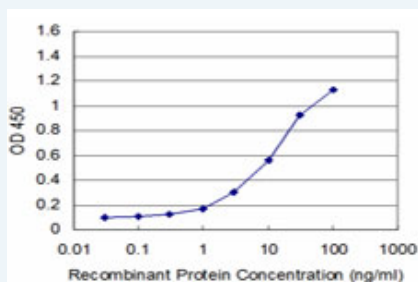
LIMK1 monoclonal antibody (M03), clone 3D10 Western Blot analysis of LIMK1 expression in IMR-32 (Cat # L008V1).

[Protocol Download](#)

Western Blot (Recombinant protein)

[Protocol Download](#)

Sandwich ELISA (Recombinant protein)



Detection limit for recombinant GST tagged LIMK1 is approximately 1ng/ml as a capture antibody.

[Protocol Download](#)

ELISA

Gene Information

Entrez GeneID: [3984](#)

GeneBank [NM_002314](#)

Accession#:

Protein [NP_002305](#)

Accession#:

Gene Name: LIMK1

Gene Alias: LIMK

Gene Description: LIM domain kinase 1

Description:

Omim ID: [601329](#)

Gene Ontology: [Hyperlink](#)

Gene Summary: There are approximately 40 known eukaryotic LIM proteins, so named for the LIM domains they contain. LIM domains are highly conserved cysteine-rich structures containing 2 zinc fingers. Although zinc fingers usually function by binding to DNA or RNA, the LIM motif probably mediates protein-protein interactions. LIM kinase-1 and LIM kinase-2 belong to a small subfamily with a unique combination of 2 N-terminal LIM motifs and a C-terminal protein kinase domain. LIMK1 is likely to be a component of an intracellular signaling pathway and may be involved in brain development. LIMK1 hemizyosity is implicated in the impaired

visuospatial constructive cognition of Williams syndrome. [provided by RefSeq]

Other Designations: LIM motif-containing protein kinase, OTTHUMP00000025066

Gene Pathway

[Axon guidance](#) [Fc gamma R-mediated phagocytosis](#) [Regulation of actin cytoskeleton](#)

Related Disease

[Brain Ischemia](#) [Cerebral Hemorrhage](#) [Cleft Lip](#) [Cleft Palate](#)
[Genetic Predisposition to Disease](#) [Intracranial Aneurysm](#) [Metabolic Syndrome X](#)
[Renal Insufficiency](#) [Chronic Stroke](#) [Werner syndrome](#)

[服務條款](#) | [隱私權政策](#) | [著作及商標](#) | [網站地圖](#)

©2016 亞諾法生技股份有限公司 Abnova Corporation. 版權所有.