



# SZABO SCANDIC

Part of Europa Biosite

## Produktinformation



Forschungsprodukte & Biochemikalien



Zellkultur & Verbrauchsmaterial



Diagnostik & molekulare Diagnostik



Laborgeräte & Service

Weitere Information auf den folgenden Seiten!  
See the following pages for more information!



### Lieferung & Zahlungsart

siehe unsere [Liefer- und Versandbedingungen](#)

### Zuschläge

- Mindermengenzuschlag
- Trockeneiszuschlag
- Gefahrgutzuschlag
- Expressversand

### SZABO-SCANDIC HandelsgmbH

Quellenstraße 110, A-1100 Wien

T. +43(0)1 489 3961-0

F. +43(0)1 489 3961-7

[mail@szabo-scandic.com](mailto:mail@szabo-scandic.com)

[www.szabo-scandic.com](http://www.szabo-scandic.com)

[linkedin.com/company/szaboscandic](https://www.linkedin.com/company/szaboscandic) 

## LLGL2 (Human) Matched Antibody Pair

Catalog # : H00003993-AP51

規格 : [ 1 Set ]

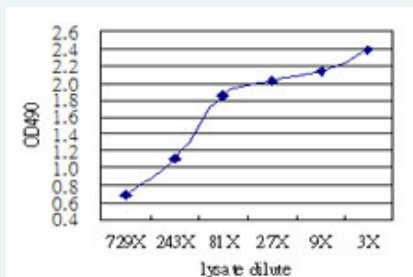
[List All](#)

### Specification

**Product Description:** This antibody pair set comes with matched antibody pair to detect and quantify protein level of human LLGL2.

**Reactivity:** Human

**Quality Control Testing:** Standard curve using LLGL2 293T overexpression lysate (non-denatured) as an analyte.



Sandwich ELISA detection sensitivity ranging from approximately 729x to 3x dilution of the LLGL2 293T overexpression lysate (non-denatured).

**Supplied Product:** Antibody pair set content:  
 1. Capture antibody: mouse monoclonal anti-LLGL2, IgG2a Kappa (100 ug)  
 2. Detection antibody: rabbit purified polyclonal anti-LLGL2 (50 ug)  
 \*Reagents are sufficient for at least 3-5 x 96 well plates using recommended protocols.

**Storage Instruction:** Store reagents of the antibody pair set at -20°C or lower. Please aliquot to avoid repeated freeze thaw cycle. Reagents should be returned to -20°C storage immediately after use.

**MSDS:**  [Download](#)

### Applications

ELISA Pair (Transfected lysate)

 [Protocol Download](#)

### Gene Information

**Entrez GeneID:** [3993](#)

**Gene Name:** LLGL2

**Gene Alias:** HGL,LGL2

**Gene Description:** lethal giant larvae homolog 2 (Drosophila)

**Gene Ontology:** [Hyperlink](#)

**Gene Summary:** The lethal (2) giant larvae protein of Drosophila plays a role in asymmetric cell division, epithelial cell polarity, and cell migration. This

human gene encodes a protein similar to lethal (2) giant larvae of Drosophila. In fly, the protein's ability to localize cell fate determinants is regulated by the atypical protein kinase C (aPKC). In human, this protein interacts with aPKC-containing complexes and is cortically localized in mitotic cells. Alternative splicing results in multiple transcript variants encoding different isoforms. [provided by RefSeq]

---

**Other Designations:** human giant larvae homolog,lethal giant larvae homolog 2

---

#### Gene Pathway

---

[Tight junction](#)

#### Related Disease

---

[Atherosclerosis](#) [Brain Ischemia](#) [Cerebral Hemorrhage](#) [Genetic Predisposition to Disease](#) [Hypertension](#) [Intracranial Hemorrhages](#) [Stroke](#) [Subarachnoid Hemorrhage](#)

---

[服務條款](#) | [隱私權政策](#) | [著作及商標](#) | [網站地圖](#)

©2016 亞諾法生技股份有限公司 Abnova Corporation. 版權所有.