



SZABO SCANDIC

Part of Europa Biosite

Produktinformation



Forschungsprodukte & Biochemikalien



Zellkultur & Verbrauchsmaterial



Diagnostik & molekulare Diagnostik



Laborgeräte & Service

Weitere Information auf den folgenden Seiten!
See the following pages for more information!



Lieferung & Zahlungsart

siehe unsere [Liefer- und Versandbedingungen](#)

Zuschläge

- Mindermengenzuschlag
- Trockeneiszuschlag
- Gefahrgutzuschlag
- Expressversand

SZABO-SCANDIC HandelsgmbH

Quellenstraße 110, A-1100 Wien

T. +43(0)1 489 3961-0

F. +43(0)1 489 3961-7

mail@szabo-scandic.com

www.szabo-scandic.com

[linkedin.com/company/szaboscandic](https://www.linkedin.com/company/szaboscandic)

LLGL2 purified MaxPab rabbit polyclonal antibody (D01P) MaxPab®

Catalog # : H00003993-D01P

規格 : [100 ug]

[List All](#)

Specification

Product Description: Rabbit polyclonal antibody raised against a full-length human LLGL2 protein.

Immunogen: LLGL2 (AAH64994.1, 1 a.a. ~ 1020 a.a) full-length human protein.

Sequence:
 MRRFLRPGHDPVRELRKRDLFQFNKTVEHGFPHQPSALGYSPSLRILAI
 GTRSGAIKLYGAPGVEFMGLHQENNAVQIHLPLGQCQLVTLDDNSLH
 LWSLKVKGGASELQEDESFTLRGPPGAAPSATQITVVLPHSSCELLYLG
 TESGNVFWQLPAFRALEDRTISSDAVLQRLPEEARHRRVFEMVEALQE
 HPRDPNQILIGYSRGLVVIWDLQGSRVLYHFLSSQLENIWWQRDGRLL
 VSCHSDGSYCQWPVSSEAQQPEPLRSLVPYGPFPCKAITRILWLTTRQG
 LPFTIFQGGMPRASYGDRHCISVIHDGQQTAFDFTSRVIGFTVLTADPA
 ATFDDPYALVLAEEELVIDLQTAGWPPVQLPYLASHCSAITCSHHVS
 NIPLKLWERIIAAGSRQNAHFSTMEWPIDGGTSLTPAPPQRDLLLLGHED
 GTVRFWDASGVCLRLLYKLVSTVRFVFLDTPNENLSAQGEDEWPPLRK
 VGSFDPYSDDPRLGIQKIFLCKYSGYLAVAGTAGQVLVLELNDEAAEQAV
 EQVEADLLQDQEGYRWKGHERLAARSGPVRFEFGFQPFVLVQCQPPA
 VVTSALHSEWRLVAFGTSHGFGLFDHQRRQVFVKCTLHPSDQLALE
 GPLSRVKSLKSLRQSFRRMRRSRVSSRKRHPAGPPGEAQEGSAKAER
 PGLQNMELAPVQRKIEARSAEDSFTGFVRTLYFADTYLKDSSRHCPSLW
 AGTNGGTIYAFSLRVPPAERRMDESVRAEQAKEIQLMHRAPVVGILVLDG
 HSVPLPEPLEVAHDLKSPDMQGSQQLLVSEEQKVFVTLPKVSAKLLK
 LTALEGSRVRRVSAHF GSRRRAEDYGEHHLAVLTNLGDIQVSLPLLKP
 QVRYSCIRREDVSGIASCVFVKYQGGFYLIISPSEFERFSLSTKWLVEPRC
 LVDSAETKNHRPENGAGPKKAPSRARNSGTQSDGEEKQPLVMERALL
 SDERVLKEIQSTLEGDRGSGNWRSHRAAVGCSSLNNGGAE

Host: Rabbit

Reactivity: Human

Quality Control Testing: Antibody reactive against mammalian transfected lysate.

Storage Buffer: In 1x PBS, pH 7.4

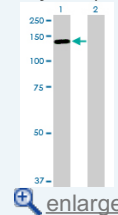
Storage Instruction: Store at -20°C or lower. Aliquot to avoid repeated freezing and thawing.

MSDS: [Download](#)

Datasheet: [Download](#)

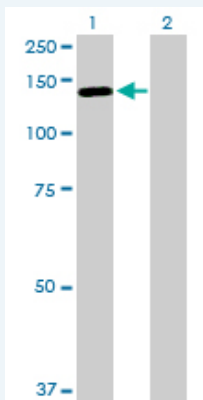
Application Image

Western Blot (Transfected lysate)



Applications

Western Blot (Transfected lysate)



Western Blot analysis of LLGL2 expression in transfected 293T cell line ([H00003993-T01](#)) by LLGL2 MaxPab polyclonal antibody.

Lane 1: LLGL2 transfected lysate(113.40 kDa).
Lane 2: Non-transfected lysate.

 [Protocol Download](#)

Gene Information

Entrez GeneID: [3993](#)

GeneBank Accession#: [BC064994.1](#)

Protein Accession#: [AAH64994.1](#)

Gene Name: LLGL2

Gene Alias: HGL,LGL2

Gene Description: lethal giant larvae homolog 2 (Drosophila)

Gene Ontology: [Hyperlink](#)

Gene Summary: The lethal (2) giant larvae protein of Drosophila plays a role in asymmetric cell division, epithelial cell polarity, and cell migration. This human gene encodes a protein similar to lethal (2) giant larvae of Drosophila. In fly, the protein's ability to localize cell fate determinants is regulated by the atypical protein kinase C (aPKC). In human, this protein interacts with aPKC-containing complexes and is cortically localized in mitotic cells. Alternative splicing results in multiple transcript variants encoding different isoforms. [provided by RefSeq]

Other Designations: human giant larvae homolog,lethal giant larvae homolog 2

Gene Pathway

[Tight junction](#)

Related Disease

[Atherosclerosis](#) [Brain Ischemia](#) [Cerebral Hemorrhage](#) [Genetic Predisposition to Disease](#) [Hypertension](#) [Intracranial Hemorrhages](#) [Stroke](#) [Subarachnoid Hemorrhage](#)