



SZABO SCANDIC

Part of Europa Biosite

Produktinformation



Forschungsprodukte & Biochemikalien



Zellkultur & Verbrauchsmaterial



Diagnostik & molekulare Diagnostik



Laborgeräte & Service

Weitere Information auf den folgenden Seiten!
See the following pages for more information!



Lieferung & Zahlungsart

siehe unsere [Liefer- und Versandbedingungen](#)

Zuschläge

- Mindermengenzuschlag
- Trockeneiszuschlag
- Gefahrgutzuschlag
- Expressversand

SZABO-SCANDIC HandelsgmbH

Quellenstraße 110, A-1100 Wien

T. +43(0)1 489 3961-0

F. +43(0)1 489 3961-7

mail@szabo-scandic.com

www.szabo-scandic.com

[linkedin.com/company/szaboscandic](https://www.linkedin.com/company/szaboscandic)

LLGL2 monoclonal antibody (M06), clone 4G2

Catalog # : H00003993-M06

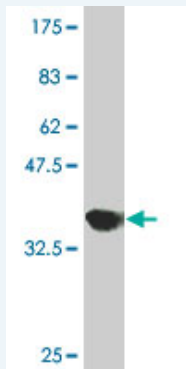
規格 : [100 ug]

[List All](#)

Specification

Product Description:	Mouse monoclonal antibody raised against a partial recombinant LLGL2.
Immunogen:	LLGL2 (NP_004515, 101 a.a. ~ 199 a.a) partial recombinant protein with GST tag. MW of the GST tag alone is 26 KDa.
Sequence:	SLKVKGGASELQEDESFTLRGPPGAAPSATQITVVLPHSSCELLYLGTE SGNVFVQLPAFRALEDRTISSDAVLQRLPEEARHRRVFEMVEALQEHP R
Host:	Mouse
Reactivity:	Human
Isotype:	IgG2a Kappa

Quality Control Testing: Antibody Reactive Against Recombinant Protein.



Western Blot detection against Immunogen (36.63 KDa) .

Storage Buffer: In 1x PBS, pH 7.4

Storage Instruction: Store at -20°C or lower. Aliquot to avoid repeated freezing and thawing.

MSDS: [Download](#)

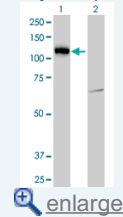
Datasheet: [Download](#)

Publication Reference

1. [A conserved polybasic domain mediates plasma membrane targeting of Lgl and its regulation by hypoxia.](#)
Dong W, Zhang X, Liu W, Chen YJ, Huang J, Austin E1, Celotto AM, Jiang WZ, Palladino MJ, Jiang Y, Hammond GR, Hong Y. J Cell Biol. 2015 Oct 26;211(2):273-86.
2. [Distinguishing Barrett gastric foveolar dysplasia from reactive cardiac mucosa in gastroesophageal reflux disease.](#)
Patil DT, Bennett AE, Mahajan D, Bronner MP. Hum Pathol. 2013 Jan 17. doi:pii: S0046-8177(12)00368-1. 10.1016/j.humpath.2012.10.004. [Epub ahead of print]
3. [Hugl1 and hugl2 in mammary epithelial cells: polarity, proliferation, and differentiation.](#)

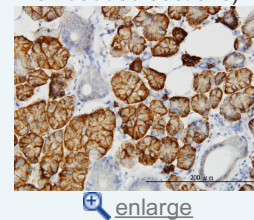
Application Image

Western Blot (Transfected lysate)

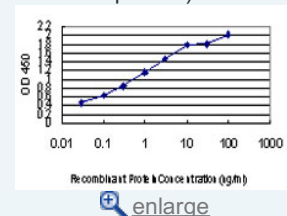


Western Blot (Recombinant protein)

Immunohistochemistry (Formalin/PFA-fixed paraffin-embedded sections)



Sandwich ELISA (Recombinant protein)



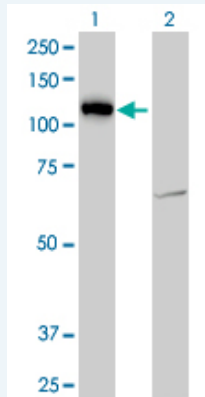
ELISA

Russ A, Louderbough JM, Zarnescu D, Schroeder JA. PLoS One. 2012;7(10):e47734. doi: 10.1371/journal.pone.0047734. Epub 2012 Oct 23.

4. Loss of Scribble causes cell competition in mammalian cells.
Norman M, Wisniewska KA, Lawrenson K, Garcia-Miranda P, Tada M, Kajita M, Mano H, Ishikawa S, Ikegawa M, Shimada T, Fujita Y. J Cell Sci. 2012 Jan 1;125(Pt 1):59-66. Epub 2012 Jan 16.
5. Involvement of Lgl and Mahjong/VprBP in cell competition.
Tamori Y, Bialucha CU, Tian AG, Kajita M, Huang YC, Norman M, Harrison N, Poulton J, Ivanovitch K, Disch L, Liu T, Deng WM, Fujita Y. PLoS Biol. 2010 Jul 13;8(7):e1000422.
6. ASPP2 Regulates Epithelial Cell Polarity through the PAR Complex.
Cong W, Hirose T, Harita Y, Yamashita A, Mizuno K, Hirano H, Ohno S. Curr Biol. 2010 Jul 7. [Epub ahead of print]

Applications

Western Blot (Transfected lysate)



Western Blot analysis of LLGL2 expression in transfected 293T cell line by LLGL2 monoclonal antibody (M06), clone 4G2.

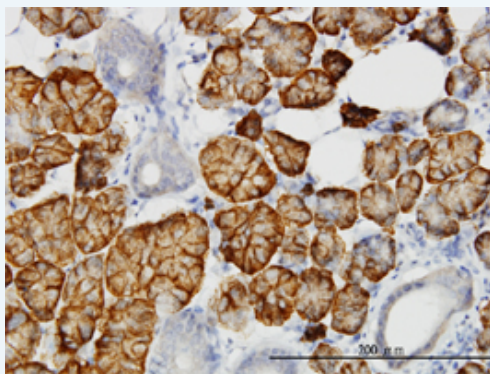
Lane 1: LLGL2 transfected lysate (113 kDa).
Lane 2: Non-transfected lysate.


 [Protocol Download](#)

Western Blot (Recombinant protein)


 [Protocol Download](#)

Immunohistochemistry (Formalin/PFA-fixed paraffin-embedded sections)

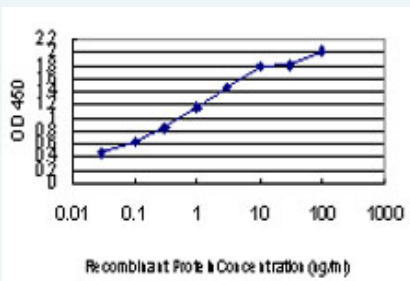


 [enlarge this image](#)

Immunoperoxidase of monoclonal antibody to LLGL2 on formalin-fixed paraffin-embedded human salivary gland. [antibody concentration 1 ug/ml]

 [Protocol Download](#)

Sandwich ELISA (Recombinant protein)



Detection limit for recombinant GST tagged LLGL2 is approximately 0.03ng/ml as a capture antibody.

 [Protocol Download](#)

ELISA

Gene Information

Entrez GeneID: [3993](#)

GeneBank [NM_004524](#)

Accession#:

Protein [NP_004515](#)

Accession#:

Gene Name: LLGL2

Gene Alias: HGL,LGL2

Gene lethal giant larvae homolog 2 (Drosophila)

Description:

Gene Ontology: [Hyperlink](#)

Gene Summary: The lethal (2) giant larvae protein of Drosophila plays a role in asymmetric cell division, epithelial cell polarity, and cell migration. This human gene encodes a protein similar to lethal (2) giant larvae of Drosophila. In fly, the protein's ability to localize cell fate determinants is regulated by the atypical protein kinase C (aPKC). In human, this protein interacts with aPKC-containing complexes and is cortically localized in mitotic cells. Alternative splicing results in multiple transcript variants encoding different isoforms. [provided by RefSeq]

Other human giant larvae homolog,lethal giant larvae homolog 2

Designations:

Gene Pathway

[Tight junction](#)

Related Disease

[Atherosclerosis](#) [Brain Ischemia](#) [Cerebral Hemorrhage](#) [Genetic Predisposition to Disease](#)
[Hypertension](#) [Intracranial Hemorrhages](#) [Stroke](#) [Subarachnoid Hemorrhage](#)