



SZABO SCANDIC

Part of Europa Biosite

Produktinformation



Forschungsprodukte & Biochemikalien



Zellkultur & Verbrauchsmaterial



Diagnostik & molekulare Diagnostik



Laborgeräte & Service

Weitere Information auf den folgenden Seiten!
See the following pages for more information!



Lieferung & Zahlungsart

siehe unsere [Liefer- und Versandbedingungen](#)

Zuschläge

- Mindermengenzuschlag
- Trockeneiszuschlag
- Gefahrgutzuschlag
- Expressversand

SZABO-SCANDIC HandelsgmbH

Quellenstraße 110, A-1100 Wien

T. +43(0)1 489 3961-0

F. +43(0)1 489 3961-7

mail@szabo-scandic.com

www.szabo-scandic.com

[linkedin.com/company/szaboscandic](https://www.linkedin.com/company/szaboscandic) 

LLGL1 polyclonal antibody (A01)

Catalog # : H00003996-A01

規格 : [50 uL]

[List All](#)

Specification

Product Description: Mouse polyclonal antibody raised against a partial recombinant LLGL1.

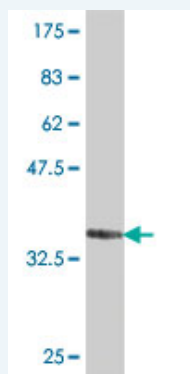
Immunogen: LLGL1 (NP_004131, 911 a.a. ~ 1010 a.a) partial recombinant protein with GST tag.

Sequence: GIASCVFTRHGQGFYLISPSEFERFSLSARNITEPLCSLDINWPRDATQAS
YRIRESPKLSQANGTPSILLAPQSLDGSPDPAHSMGPDTPPEPPEAALSP

Host: Mouse

Reactivity: Human

Quality Control Testing: Antibody Reactive Against Recombinant Protein.



Western Blot detection against Immunogen (37.11 KDa) .

Storage Buffer: 50 % glycerol

Storage Instruction: Store at -20°C or lower. Aliquot to avoid repeated freezing and thawing.

MSDS: [Download](#)

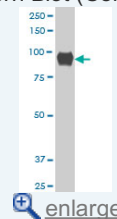
Datasheet: [Download](#)

Applications

Western Blot (Cell lysate)

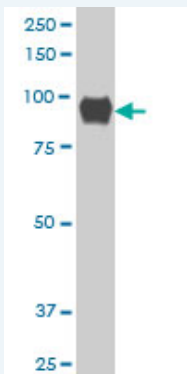
Application Image

Western Blot (Cell lysate)



Western Blot (Recombinant protein)


ELISA



LLGL1 polyclonal antibody (A01), Lot # 060814QCS1 Western Blot analysis of LLGL1 expression in Jurkat (Cat # L017V1).

 [Protocol Download](#)

Western Blot (Recombinant protein)

 [Protocol Download](#)

ELISA

Gene Information

Entrez GeneID: [3996](#)

GeneBank Accession#: [NM_004140](#)

Protein Accession#: [NP_004131](#)

Gene Name: LLGL1

Gene Alias: DLG4,HUGL,HUGL-1,HUGL1,LLGL

Gene Description: lethal giant larvae homolog 1 (Drosophila)

Omim ID: [600966](#)

Gene Ontology: [Hyperlink](#)

Gene Summary: This gene encodes a protein that is similar to a tumor suppressor in Drosophila. The protein is part of a cytoskeletal network and is associated with nonmuscle myosin II heavy chain and a kinase that specifically phosphorylates this protein at serine residues. The gene is located within the Smith-Magenis syndrome region on chromosome 17. [provided by RefSeq]

Other Designations: lethal giant larvae homolog 1

Gene Pathway

[Tight junction](#)

Related Disease

[Cardiovascular Diseases](#) [Diabetes Mellitus, Type 2](#) [Edema](#)