



SZABO SCANDIC

Part of Europa Biosite

Produktinformation



Forschungsprodukte & Biochemikalien



Zellkultur & Verbrauchsmaterial



Diagnostik & molekulare Diagnostik



Laborgeräte & Service

Weitere Information auf den folgenden Seiten!
See the following pages for more information!



Lieferung & Zahlungsart

siehe unsere [Liefer- und Versandbedingungen](#)

Zuschläge

- Mindermengenzuschlag
- Trockeneiszuschlag
- Gefahrgutzuschlag
- Expressversand

SZABO-SCANDIC HandelsgmbH

Quellenstraße 110, A-1100 Wien

T. +43(0)1 489 3961-0

F. +43(0)1 489 3961-7

mail@szabo-scandic.com

www.szabo-scandic.com

[linkedin.com/company/szaboscandic](https://www.linkedin.com/company/szaboscandic) 

LLGL1 monoclonal antibody (M01), clone 5G2

Catalog # : H00003996-M01

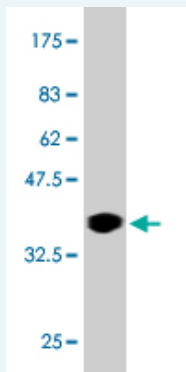
規格 : [100 ug]

[List All](#)

Specification

Product Description:	Mouse monoclonal antibody raised against a partial recombinant LLGL1.
Immunogen:	LLGL1 (NP_004131, 911 a.a. ~ 1010 a.a) partial recombinant protein with GST tag. MW of the GST tag alone is 26 KDa.
Sequence:	GIASCVFTRHGQGFYLISPSEFERFSLARNITEPLCSLDINWPRDATQAS YRIRESPKLSQANGTPSILLAPQSLDGSPDPAHSMGPDTPPEPPEAALSP
Host:	Mouse
Reactivity:	Human
Isotype:	IgG1 Kappa

Quality Control Testing: Antibody Reactive Against Recombinant Protein.



Western Blot detection against Immunogen (36.74 KDa) .

Storage Buffer: In 1x PBS, pH 7.4

Storage Instruction: Store at -20°C or lower. Aliquot to avoid repeated freezing and thawing.

MSDS: [Download](#)

Datasheet: [Download](#)

Publication Reference

- [Hugl1 and hugl2 in mammary epithelial cells: polarity, proliferation, and differentiation.](#) Russ A, Louderbough JM, Zarnescu D, Schroeder JA. PLoS One. 2012;7(10):e47734. doi: 10.1371/journal.pone.0047734. Epub 2012 Oct 23.

Applications

Western Blot (Recombinant protein)

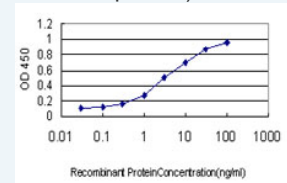
[Protocol Download](#)

Sandwich ELISA (Recombinant protein)

Application Image

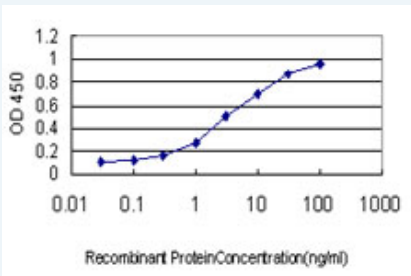
Western Blot (Recombinant protein)

Sandwich ELISA (Recombinant protein)




[enlarge](#)

ELISA



Detection limit for recombinant GST tagged LLGL1 is approximately 0.03ng/ml as a capture antibody.

 [Protocol Download](#)

ELISA

Gene Information

Entrez GeneID: [3996](#)

GeneBank [NM_004140](#)

Accession#:

Protein [NP_004131](#)

Accession#:

Gene Name: LLGL1

Gene Alias: DLG4,HUGL,HUGL-1,HUGL1,LLGL

Gene Description: lethal giant larvae homolog 1 (Drosophila)

Omim ID: [600966](#)

Gene Ontology: [Hyperlink](#)

Gene Summary: This gene encodes a protein that is similar to a tumor suppressor in Drosophila. The protein is part of a cytoskeletal network and is associated with nonmuscle myosin II heavy chain and a kinase that specifically phosphorylates this protein at serine residues. The gene is located within the Smith-Magenis syndrome region on chromosome 17. [provided by RefSeq]

Other Designations: lethal giant larvae homolog 1

Gene Pathway

[Tight junction](#)

Related Disease

[Cardiovascular Diseases](#) [Diabetes Mellitus, Type 2](#) [Edema](#)