



SZABO SCANDIC

Part of Europa Biosite

Produktinformation



Forschungsprodukte & Biochemikalien



Zellkultur & Verbrauchsmaterial



Diagnostik & molekulare Diagnostik



Laborgeräte & Service

Weitere Information auf den folgenden Seiten!
See the following pages for more information!



Lieferung & Zahlungsart

siehe unsere [Liefer- und Versandbedingungen](#)

Zuschläge

- Mindermengenzuschlag
- Trockeneiszuschlag
- Gefahrgutzuschlag
- Expressversand

SZABO-SCANDIC HandelsgmbH

Quellenstraße 110, A-1100 Wien

T. +43(0)1 489 3961-0

F. +43(0)1 489 3961-7

mail@szabo-scandic.com

www.szabo-scandic.com

[linkedin.com/company/szaboscandic](https://www.linkedin.com/company/szaboscandic) 

LMNA purified MaxPab mouse polyclonal antibody (B01P) MaxPab®

Catalog # : H00004000-B01P

規格 : [50 ug]

[List All](#)

Specification

Product Description: Mouse polyclonal antibody raised against a full-length human LMNA protein.

Immunogen: LMNA (NP_733821.1, 1 a.a. ~ 664 a.a) full-length human protein.

Sequence:
 METPSQRRATRSGAQASSTPLSPTRITRLQEKEDLQELNDRDLAVYIDRV
 RSLETENAGLRLRITESEEVVSREVSGIKAAYEALGDARKTLDSVAKER
 ARLQLELSKVREEFKELKARNTKKEGDLIAAQARLKDLEALLNSKEAALS
 TALSEKRTLEGELHDLRGQVAKLEAALGEAKKQLQDEMLRRVDAENRL
 QTMKEELDFQKNYSEELRETKRRHETRLVEIDNGKQREFESRLADALQE
 LRAQHEDQVEQYKKELEKTYSAKLDNARQSAERNSNLVGAHEELQQS
 RIRIDLSAQLSQLQKQLAAKEAKLRDLEDLARERDTSRLLAEKEREM
 AEMRARMQQQLDEYQELLDIKLALDMEIHAYRKLLGEEERLRLSPSPTS
 QRSRGRASSHSQTQGGGSVTKKRKLESTESRSSFSQHARTSGRVAV
 EEVDEEGKFVRLRNKSNEDQSMGNWQIKRQNGDDPLLTYRFPPKFTLK
 AGQVVTIWAAGAGATHSPPTDLVWKAQNTWGCNLSLRTALINSTGEEV
 AMRKLVRVSVTVEDDEDEDGDDLLHHHGHSHCSSSGDPAEYNLRSRTV
 LCGTCGQPADKASASGSGAQVGGPISSGSSASSVTVTRSYRSVGGSG
 GGSFGDNLVTRSYLLGNSSPRTQSPQNCSIM

Host: Mouse

Reactivity: Human

Quality Control Testing: Antibody reactive against mammalian transfected lysate.

Storage Buffer: In 1x PBS, pH 7.4

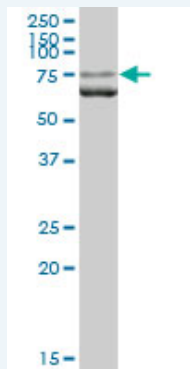
Storage Instruction: Store at -20°C or lower. Aliquot to avoid repeated freezing and thawing.

MSDS:  [Download](#)

Datasheet:  [Download](#)

Applications

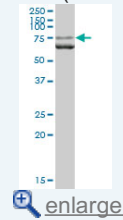
Western Blot (Tissue lysate)



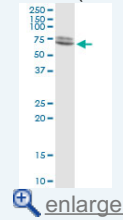
LMNA MaxPab polyclonal antibody. Western Blot analysis of LMNA expression in human pancreas.

Application Image

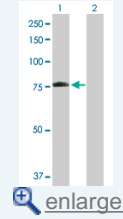
Western Blot (Tissue lysate)



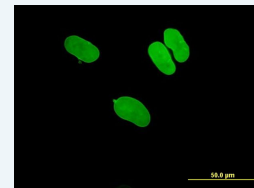
Western Blot (Cell lysate)



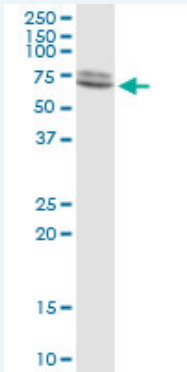
Western Blot (Transfected lysate)



Immunofluorescence

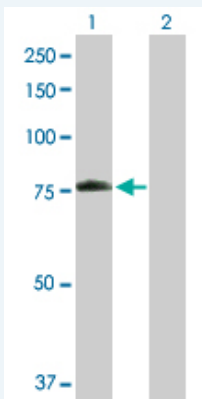


Western Blot (Cell lysate)



LMNA MaxPab polyclonal antibody. Western Blot analysis of LMNA expression in A-431.

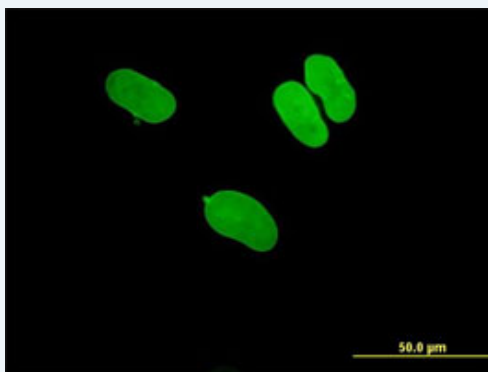
Western Blot (Transfected lysate)




Western Blot analysis of LMNA expression in transfected 293T cell line (H00004000-T01) by LMNA MaxPab polyclonal antibody.

Lane 1: LMNA transfected lysate(73.04 KDa).
Lane 2: Non-transfected lysate.

Immunofluorescence



 enlarge this image

Immunofluorescence of purified MaxPab antibody to LMNA on HeLa cell. [antibody concentration 10 ug/ml]

Gene Information

Entrez GeneID: 4000

GeneBank NM_170707.1
Accession#:

Protein NP_733821.1
Accession#:

Gene Name: LMNA

Gene Alias: CDCD1,CDDC,CMD1A,CMT2B1,EMD2,FPL,FPLD,HGPS,IDC,LDP1,LFP, LGMD1B,LMN1,LMNC,PRO1

Gene Description: lamin A/C

Omim ID: [115200](#), [150330](#), [151660](#), [159001](#), [176670](#), [181350](#), [248370](#), [275210](#), [277700](#), [604929](#), [605588](#), [607920](#), [608056](#)

Gene Ontology: [Hyperlink](#)

Gene Summary: The nuclear lamina consists of a two-dimensional matrix of proteins located next to the inner nuclear membrane. The lamin family of proteins make up the matrix and are highly conserved in evolution. During mitosis, the lamina matrix is reversibly disassembled as the lamin proteins are phosphorylated. Lamin proteins are thought to be involved in nuclear stability, chromatin structure and gene expression. Vertebrate lamins consist of two types, A and B. Through alternate splicing, this gene encodes three type A lamin isoforms. Mutations in this gene lead to several diseases: Emery-Dreifuss muscular dystrophy, familial partial lipodystrophy, limb girdle muscular dystrophy, dilated cardiomyopathy, Charcot-Marie-Tooth disease, and Hutchinson-Gilford progeria syndrome. [provided by RefSeq]

Other Designations: 70 kDa lamin,OTTHUMP00000015843,OTTHUMP00000015848

Gene Pathway

[Arrhythmogenic right ventricular cardiomyopathy \(ARVC\)](#)
[Hypertrophic cardiomyopathy \(HCM\)](#)

Related Disease

[Aging](#), [Premature Alzheimer Disease](#) [Alzheimer disease](#) [Arrhythmia](#) [Atherosclerosis](#) [Atherosclerosis](#) [Atrial Fibrillation](#) [Calcinosis](#) [Cardiomyopathy, Dilated](#) [Cardiovascular Diseases](#) [Cerebrovascular Disorders](#) [Charcot-Marie-Tooth Disease](#) [Cognition](#) [Cognition Disorders](#) [Coronary Artery Disease](#) [Death, Sudden](#) [Diabetes Mellitus, Type 2](#) [Diabetic Nephropathies](#) [Edema](#)

... see more