



SZABO SCANDIC

Part of Europa Biosite

Produktinformation



Forschungsprodukte & Biochemikalien



Zellkultur & Verbrauchsmaterial



Diagnostik & molekulare Diagnostik



Laborgeräte & Service

Weitere Information auf den folgenden Seiten!
See the following pages for more information!



Lieferung & Zahlungsart

siehe unsere [Liefer- und Versandbedingungen](#)

Zuschläge

- Mindermengenzuschlag
- Trockeneiszuschlag
- Gefahrgutzuschlag
- Expressversand

SZABO-SCANDIC HandelsgmbH

Quellenstraße 110, A-1100 Wien

T. +43(0)1 489 3961-0

F. +43(0)1 489 3961-7

mail@szabo-scandic.com

www.szabo-scandic.com

[linkedin.com/company/szaboscandic](https://www.linkedin.com/company/szaboscandic) 

LMNB1 MaxPab mouse polyclonal antibody (B01) MaxPab®

Catalog # : H00004001-B01

規格 : [50 uL]

[List All](#)

Specification

Product Description: Mouse polyclonal antibody raised against a full-length human LMNB1 protein.

Immunogen: LMNB1 (AAH12295.1, 1 a.a. ~ 586 a.a) full-length human protein.

Sequence:
 MATATPVPPRMGSRAGGPTTPLSPTRLSRLQEKEELRELNDR LAVYIDK
 VRSLETENSALQLQVTEREEVGRGLTGLKALYETELADARRALDDTAR
 ERAKLQIELGKCKAEHDQLLLNYAKKESDLNGAQIKLREYEAALNSKDAAL
 ATALGDKKSLEGDLEDLKDQIAQLEASLAAAKQLADETLLKVDLENRCQ
 SLTEDLEFRKSMYEEEEINETRRKHETRLVEVDSGRQIEYKYLAQALHEM
 REQHDAQVRLYKEELEQTYHAKLENARLSSEMNTSTVNSAREELMESRM
 RIESLSSQLSNLQKESRACLERIQELEDLLAKEKDNSRRMLTDKEREMAEI
 RDQMQQQLNDYEQLLDVKLALDMEISAYRKLLQGEEERLKLSPSPSSRV
 TVSRASSRSVTRTRGKRKRV DVEESEASSVSISHASATGNVCIEEIDV
 DGK FIRL KNTSEQDQPMGGWEMIRKIGDTSVSYKYTSRYVLKAGQTVTI
 WAANAGVTASPPTDLIWKQNSWGTGEDVKVILKNSQGEEVAQRSTVF
 KTTIPEEEEEEEEEAGVWVEEELFHQQGT PRASNRSCAIM

Host: Mouse

Reactivity: Human

Quality Control Testing: Antibody reactive against mammalian transfected lysate.

Storage Buffer: No additive

Storage Instruction: Store at -20°C or lower. Aliquot to avoid repeated freezing and thawing.

Note: For IHC and IF applications, antibody purification with Protein A will be needed prior to use.

MSDS:  [Download](#)

Datasheet:  [Download](#)

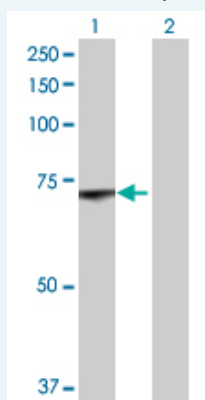
Application Image

Western Blot (Transfected lysate)



Applications


Western Blot (Transfected lysate)



Western Blot analysis of LMNB1 expression in transfected 293T cell line ([H00004001-T01](#)) by LMNB1 MaxPab polyclonal antibody.

Lane 1: LMNB1 transfected lysate(64.46 KDa).

Lane 2: Non-transfected lysate.

 [Protocol Download](#)

Gene Information

Entrez GeneID: [4001](#)

GeneBank Accession#: [BC012295.1](#)

Protein Accession#: [AAH12295.1](#)

Gene Name: LMNB1

Gene Alias: ADLD,LMN,LMN2,LMNB,MGC111419

Gene Description: lamin B1

Omim ID: [150340](#), [169500](#)

Gene Ontology: [Hyperlink](#)

Gene Summary: The nuclear lamina consists of a two-dimensional matrix of proteins located next to the inner nuclear membrane. The lamin family of proteins make up the matrix and are highly conserved in evolution. During mitosis, the lamina matrix is reversibly disassembled as the lamin proteins are phosphorylated. Lamin proteins are thought to be involved in nuclear stability, chromatin structure and gene expression. Vertebrate lamins consist of two types, A and B. This gene encodes one of the two B type proteins, B1. [provided by RefSeq]

Other Designations: -

Related Disease

[Cardiovascular Diseases](#) [Diabetes Mellitus, Type 2](#) [Edema](#) [Multiple Sclerosis](#)

[服務條款](#) | [隱私權政策](#) | [著作及商標](#) | [網站地圖](#)

©2016 亞諾法生技股份有限公司 Abnova Corporation. 版權所有.