



SZABO SCANDIC

Part of Europa Biosite

Produktinformation



Forschungsprodukte & Biochemikalien



Zellkultur & Verbrauchsmaterial



Diagnostik & molekulare Diagnostik



Laborgeräte & Service

Weitere Information auf den folgenden Seiten!
See the following pages for more information!



Lieferung & Zahlungsart

siehe unsere [Liefer- und Versandbedingungen](#)

Zuschläge

- Mindermengenzuschlag
- Trockeneiszuschlag
- Gefahrgutzuschlag
- Expressversand

SZABO-SCANDIC HandelsgmbH

Quellenstraße 110, A-1100 Wien

T. +43(0)1 489 3961-0

F. +43(0)1 489 3961-7

mail@szabo-scandic.com

www.szabo-scandic.com

[linkedin.com/company/szaboscandic](https://www.linkedin.com/company/szaboscandic)

LMNB1 purified MaxPab rabbit polyclonal antibody (D01P) MaxPab®

Catalog # : H00004001-D01P

規格 : [100 ug]

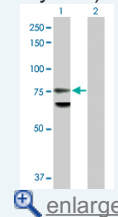
List All

Specification

Product Description:	Rabbit polyclonal antibody raised against a full-length human LMNB1 protein.
Immunogen:	LMNB1 (AAH12295.1, 1 a.a. ~ 586 a.a) full-length human protein.
Sequence:	MATATPVPPRMGSRAGGPTTPLSPTRLSRLQEKEELRELNDR LAVYIDK VRSLETENSALQLQVTEREEVGRGLTGLKALYETELADARRALDDTAR ERAKLQIELGKCKAEHDQLLLNYAKKESDLNGAQIKLREYEAALNSKDAAL ATALGDKKSLEGDLEDLKDQIAQLEASLAAAKQLADETLLKVDLENRCQ SLTEDLEFRKSMYEEEEINETRRKHETRLVEVDSGRQIEYKYLAQALHEM REQHDAQVRLYKEELEQTYHAKLENARLSSEMNTSTVNSAREELMESRM RIESLSSQLSNLQKESRACLERIQELEDLLAKEKDNSRRMLTDKEREMAEI RDQMQQQLNDYEQLLDVKLALDMEISAYRKLLQGEEERLKLSPSPSSRV TVSRASSRSVTRTRGKRKRV DVEESEASSVSISHASATGNVCIEEIDV DGKFIRLKN TSEQDQPMGGWEMIRKIGDTSVSYKYTSRYVLKAGQTVTI WAANAGVTASPPTDLWKNQNSWGTGEDVKVILKNSQGEEVAQRSTVF KTTIPEEEEEEEAAGVWVEEELFHQQGT PRASNRSCAIM
Host:	Rabbit
Reactivity:	Human
Quality Control Testing:	Antibody reactive against mammalian transfected lysate.
Storage Buffer:	In 1x PBS, pH 7.4
Storage Instruction:	Store at -20°C or lower. Aliquot to avoid repeated freezing and thawing.
MSDS:	Download
Datasheet:	Download

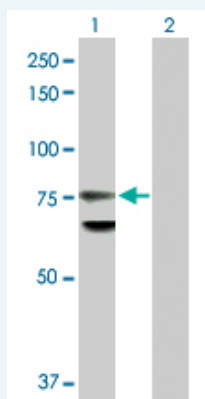
Application Image

Western Blot (Transfected lysate)



Applications

Western Blot (Transfected lysate)



Western Blot analysis of LMNB1 expression in transfected 293T cell line (H00004001-T01) by LMNB1 MaxPab polyclonal antibody.

Lane 1: LMNB1 transfected lysate(66.40 KDa).
Lane 2: Non-transfected lysate.

 [Protocol Download](#)

Gene Information

Entrez GeneID: [4001](#)

**GeneBank
Accession#:** [BC012295.1](#)

**Protein
Accession#:** [AAH12295.1](#)

Gene Name: LMNB1

Gene Alias: ADLD,LMN,LMN2,LMNB,MGC111419

**Gene
Description:** lamin B1

Omim ID: [150340](#), [169500](#)

Gene Ontology: [Hyperlink](#)

Gene Summary: The nuclear lamina consists of a two-dimensional matrix of proteins located next to the inner nuclear membrane. The lamin family of proteins make up the matrix and are highly conserved in evolution. During mitosis, the lamina matrix is reversibly disassembled as the lamin proteins are phosphorylated. Lamin proteins are thought to be involved in nuclear stability, chromatin structure and gene expression. Vertebrate lamins consist of two types, A and B. This gene encodes one of the two B type proteins, B1. [provided by RefSeq]

**Other
Designations:** -

Related Disease

[Cardiovascular Diseases](#) [Diabetes Mellitus, Type 2](#) [Edema](#) [Multiple Sclerosis](#)

[服務條款](#) | [隱私權政策](#) | [著作及商標](#) | [網站地圖](#)

©2016 亞諾法生技股份有限公司 Abnova Corporation. 版權所有.