



SZABO SCANDIC

Part of Europa Biosite

Produktinformation



Forschungsprodukte & Biochemikalien



Zellkultur & Verbrauchsmaterial



Diagnostik & molekulare Diagnostik



Laborgeräte & Service

Weitere Information auf den folgenden Seiten!
See the following pages for more information!



Lieferung & Zahlungsart

siehe unsere [Liefer- und Versandbedingungen](#)

Zuschläge

- Mindermengenzuschlag
- Trockeneiszuschlag
- Gefahrgutzuschlag
- Expressversand

SZABO-SCANDIC HandelsgmbH

Quellenstraße 110, A-1100 Wien

T. +43(0)1 489 3961-0

F. +43(0)1 489 3961-7

mail@szabo-scandic.com

www.szabo-scandic.com

[linkedin.com/company/szaboscandic](https://www.linkedin.com/company/szaboscandic) 

LMO1 polyclonal antibody (A01)

Catalog # : H00004004-A01

規格 : [50 uL]

List All

Specification

Product Description: Mouse polyclonal antibody raised against a partial recombinant LMO1.

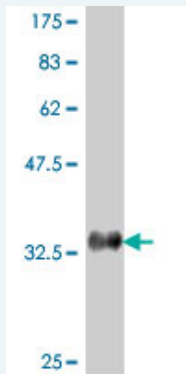
Immunogen: LMO1 (NP_002306, 1 a.a. ~ 90 a.a) partial recombinant protein with GST tag.

Sequence: MMVLDKEDGVPMLSVQPKGKQKGCAGCNRKIKDRYLLKALDKYWHEDC LKACACDCRLGEVGSTLYTKANLILCRRDYLRRLF GTTGNC AA

Host: Mouse

Reactivity: Human

Quality Control Testing: Antibody Reactive Against Recombinant Protein.



Western Blot detection against Immunogen (36.01 KDa) .

Storage Buffer: 50 % glycerol

Storage Instruction: Store at -20°C or lower. Aliquot to avoid repeated freezing and thawing.

MSDS: [Download](#)

Datasheet: [Download](#)

Applications

Western Blot (Recombinant protein)

[Protocol Download](#)

ELISA

Gene Information

Entrez GeneID: [4004](#)

GeneBank Accession#: [NM_002315](#)

Application Image

Western Blot (Recombinant protein)

ELISA

Protein [NP_002306](#)

Accession#:

Gene Name: LMO1

Gene Alias: MGC116692,RBTN1,RHOM1,TTG1

Gene LIM domain only 1 (rhombotin 1)

Description:

Omim ID: [186921](#)

Gene Ontology: [Hyperlink](#)

Gene Summary: LMO1 encodes a cysteine-rich, two LIM domain transcriptional regulator. It is mapped to an area of consistent chromosomal translocation in chromosome 11, disrupting it in T-cell leukemia, although more rarely than the related gene, LMO2 is disrupted. [provided by RefSeq]

Other LIM domain only 1

Designations:

Related Disease

[Osteoporosis Tobacco Use Disorder](#)

[服務條款](#) | [隱私權政策](#) | [著作及商標](#) | [網站地圖](#)

©2016 亞諾法生技股份有限公司 Abnova Corporation. 版權所有.