



# SZABO SCANDIC

Part of Europa Biosite

## Produktinformation



Forschungsprodukte & Biochemikalien



Zellkultur & Verbrauchsmaterial



Diagnostik & molekulare Diagnostik



Laborgeräte & Service

Weitere Information auf den folgenden Seiten!  
See the following pages for more information!



### Lieferung & Zahlungsart

siehe unsere [Liefer- und Versandbedingungen](#)

### Zuschläge

- Mindermengenzuschlag
- Trockeneiszuschlag
- Gefahrgutzuschlag
- Expressversand

### SZABO-SCANDIC HandelsgmbH

Quellenstraße 110, A-1100 Wien

T. +43(0)1 489 3961-0

F. +43(0)1 489 3961-7

[mail@szabo-scandic.com](mailto:mail@szabo-scandic.com)

[www.szabo-scandic.com](http://www.szabo-scandic.com)

[linkedin.com/company/szaboscandic](https://www.linkedin.com/company/szaboscandic) 

## LMO1 monoclonal antibody (M01), clone 4F7

Catalog # : H00004004-M01

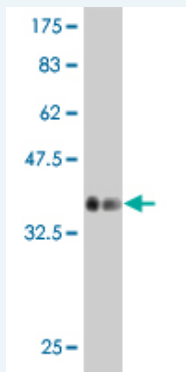
規格 : [ 100 ug ]

List All

### Specification

<b>Product Description:</b>	Mouse monoclonal antibody raised against a partial recombinant LMO1.
<b>Immunogen:</b>	LMO1 (NP_002306, 1 a.a. ~ 90 a.a) partial recombinant protein with GST tag. MW of the GST tag alone is 26 KDa.
<b>Sequence:</b>	MMVLDKEDGVPMLSVQPKGKQKGCAGCNRKIKDRYLLKALDKYWHEDC LKCACDCRLGEVGSTLYTKANLILCRRDYLRFLGTTGNCAA
<b>Host:</b>	Mouse
<b>Reactivity:</b>	Human
<b>Isotype:</b>	IgG2a Kappa

**Quality Control Testing:** Antibody Reactive Against Recombinant Protein.



Western Blot detection against Immunogen (35.64 KDa) .

**Storage Buffer:** In 1x PBS, pH 7.4

**Storage Instruction:** Store at -20°C or lower. Aliquot to avoid repeated freezing and thawing.

**MSDS:** [Download](#)

**Datasheet:** [Download](#)

### Applications

**Western Blot (Recombinant protein)**

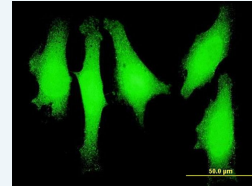
[Protocol Download](#)

**Immunofluorescence**

### Application Image

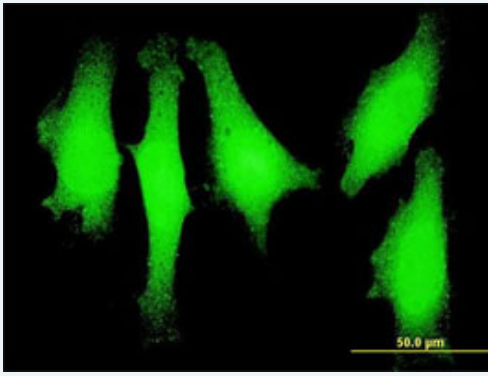
Western Blot (Recombinant protein)

Immunofluorescence



[enlarge](#)

ELISA



[enlarge this image](#)

Immunofluorescence of monoclonal antibody to LMO1 on HeLa cell . [antibody concentration 10 ug/ml]

 [Protocol Download](#)

---

## ELISA

---

## Gene Information

---

**Entrez GeneID:** [4004](#)

**GeneBank  
Accession#:** [NM\\_002315](#)

**Protein  
Accession#:** [NP\\_002306](#)

**Gene Name:** LMO1

**Gene Alias:** MGC116692,RBTN1,RHOM1,TTG1

**Gene  
Description:** LIM domain only 1 (rhombotin 1)

**Omim ID:** [186921](#)

**Gene Ontology:** [Hyperlink](#)

**Gene Summary:** LMO1 encodes a cysteine-rich, two LIM domain transcriptional regulator. It is mapped to an area of consistent chromosomal translocation in chromosome 11, disrupting it in T-cell leukemia, although more rarely than the related gene, LMO2 is disrupted. [provided by RefSeq]

**Other  
Designations:** LIM domain only 1

---

## Related Disease

---

[Osteoporosis](#) [Tobacco Use Disorder](#)

---

[服務條款](#) | [隱私權政策](#) | [著作及商標](#) | [網站地圖](#)

©2016 亞諾法生技股份有限公司 Abnova Corporation. 版權所有.