



SZABO SCANDIC

Part of Europa Biosite

Produktinformation



Forschungsprodukte & Biochemikalien



Zellkultur & Verbrauchsmaterial



Diagnostik & molekulare Diagnostik



Laborgeräte & Service

Weitere Information auf den folgenden Seiten!
See the following pages for more information!



Lieferung & Zahlungsart

siehe unsere [Liefer- und Versandbedingungen](#)

Zuschläge

- Mindermengenzuschlag
- Trockeneiszuschlag
- Gefahrgutzuschlag
- Expressversand

SZABO-SCANDIC HandelsgmbH

Quellenstraße 110, A-1100 Wien

T. +43(0)1 489 3961-0

F. +43(0)1 489 3961-7

mail@szabo-scandic.com

www.szabo-scandic.com

[linkedin.com/company/szaboscandic](https://www.linkedin.com/company/szaboscandic) 

LMO2 monoclonal antibody (M01), clone 6B8

Catalog # : H00004005-M01

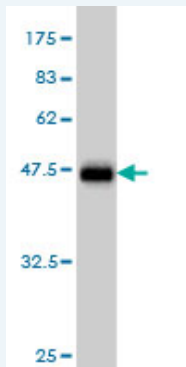
規格 : [100 ug]

[List All](#)

Specification

Product Description:	Mouse monoclonal antibody raised against a full length recombinant LMO2.
Immunogen:	LMO2 (AAH34041, 1 a.a. ~ 158 a.a) full-length recombinant protein with GST tag. MW of the GST tag alone is 26 KDa.
Sequence:	MSSAIERKSLDPSEEPVDEVLLQIPPSLLTCTGGCQQNIGDRYFLKAIDQYW HEDCLSCDLGCRLEGEVGRRLYYKLRKLCRRDYLRPFGQDGLCASC DKRIRAYEMTMRVKDKVYHLECFKCAACQKHFVCGDRYLLINSDIVCEQD IYEWTKINGMI
Host:	Mouse
Reactivity:	Human
Isotype:	IgG1 Kappa

Quality Control Testing: Antibody Reactive Against Recombinant Protein.



Western Blot detection against Immunogen (43.12 KDa) .

Storage Buffer: In 1x PBS, pH 7.4

Storage Instruction: Store at -20°C or lower. Aliquot to avoid repeated freezing and thawing.

MSDS: [Download](#)

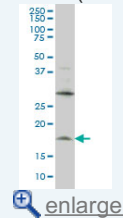
Datasheet: [Download](#)

Applications

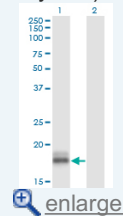
Western Blot (Cell lysate)

Application Image

Western Blot (Cell lysate)



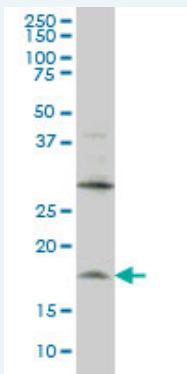
Western Blot (Transfected lysate)



Western Blot (Recombinant protein)

Sandwich ELISA (Recombinant protein)

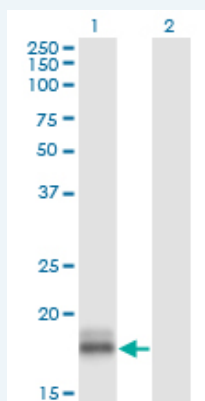
ELISA



LMO2 monoclonal antibody (M01), clone 6B8 Western Blot analysis of LMO2 expression in HL-60 (Cat # L014V1).

 [Protocol Download](#)

Western Blot (Transfected lysate)



Western Blot analysis of LMO2 expression in transfected 293T cell line by LMO2 monoclonal antibody (M01), clone 6B8.

Lane 1: LMO2 transfected lysate(18.4 KDa).

Lane 2: Non-transfected lysate.


 [Protocol Download](#)

Western Blot (Recombinant protein)

 [Protocol Download](#)

Sandwich ELISA (Recombinant protein)

Detection limit for recombinant GST tagged LMO2 is approximately 30ng/ml as a capture antibody.

 [Protocol Download](#)

ELISA

Gene Information

Entrez GeneID: [4005](#)

GeneBank [BC034041](#)
Accession#:

Protein [AAH34041](#)
Accession#:

Gene Name: LMO2

Gene Alias: RBTN2,RBTNL1,RHOM2,TTG2

Gene Description: LIM domain only 2 (rhombotin-like 1)

Omim ID: [180385](#)

Gene Ontology: [Hyperlink](#)

Gene Summary: LMO2 encodes a cysteine-rich, two LIM-domain protein that is required for yolk sac erythropoiesis. The LMO2 protein has a central and crucial role in hematopoietic development and is highly conserved. The LMO2 transcription start site is located approximately 25 kb downstream from the 11p13 T-cell translocation cluster (11p13 ttc), where a number T-cell acute lymphoblastic leukemia-specific translocations occur. Alternative splicing results in multiple transcript variants encoding different isoforms

Other Designations: LIM domain only 2, T-cell translocation gene 2, rhombotin 2, rhombotin-like 1

Related Disease

[Genetic Predisposition to Disease](#) [Hematologic Diseases](#) [Hodgkin Disease](#)
[Lung Neoplasms](#) [Lymphoma, B-Cell](#) [Lymphoma, Follicular](#)
[Lymphoma, Large B-Cell, Diffuse](#) [Lymphoproliferative Disorders](#) [Occupational Diseases](#)
[Pulmonary Disease, Chronic Obstructive](#) [Urinary Bladder Neoplasms](#)
[Waldenstrom Macroglobulinemia](#) [Werner syndrome](#)

[服務條款](#) | [隱私權政策](#) | [著作及商標](#) | [網站地圖](#)

©2016 亞諾法生技股份有限公司 Abnova Corporation. 版權所有.