



# SZABO SCANDIC

Part of Europa Biosite

## Produktinformation



Forschungsprodukte & Biochemikalien



Zellkultur & Verbrauchsmaterial



Diagnostik & molekulare Diagnostik



Laborgeräte & Service

Weitere Information auf den folgenden Seiten!  
See the following pages for more information!



### Lieferung & Zahlungsart

siehe unsere [Liefer- und Versandbedingungen](#)

### Zuschläge

- Mindermengenzuschlag
- Trockeneiszuschlag
- Gefahrgutzuschlag
- Expressversand

### SZABO-SCANDIC HandelsgmbH

Quellenstraße 110, A-1100 Wien

T. +43(0)1 489 3961-0

F. +43(0)1 489 3961-7

[mail@szabo-scandic.com](mailto:mail@szabo-scandic.com)

[www.szabo-scandic.com](http://www.szabo-scandic.com)

[linkedin.com/company/szaboscandic](https://www.linkedin.com/company/szaboscandic) 

## LMO2 monoclonal antibody (M05), clone 4D3

Catalog # : H00004005-M05

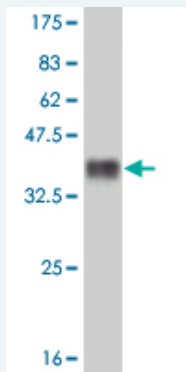
規格 : [ 100 ug ]

[List All](#)

### Specification

<b>Product Description:</b>	Mouse monoclonal antibody raised against a full length recombinant LMO2.
<b>Immunogen:</b>	LMO2 (NP_005565, 16 a.a. ~ 102 a.a) full length recombinant protein with GST tag. MW of the GST tag alone is 26 KDa.
<b>Sequence:</b>	PVDEVLQIPPSLLTCGGCQQNIGDRYFLKAIDQYWHEDCLSCDLGCGRLGEVGRRLYYKLRKLCRRDYLRFLFGQDGLCASCDKRIR
<b>Host:</b>	Mouse
<b>Reactivity:</b>	Human
<b>Isotype:</b>	IgG2a Kappa

**Quality Control Testing:** Antibody Reactive Against Recombinant Protein.



Western Blot detection against Immunogen (35.57 KDa) .

**Storage Buffer:** In 1x PBS, pH 7.4

**Storage Instruction:** Store at -20°C or lower. Aliquot to avoid repeated freezing and thawing.

**MSDS:** [Download](#)

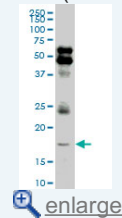
**Datasheet:** [Download](#)

### Applications

Western Blot (Tissue lysate)

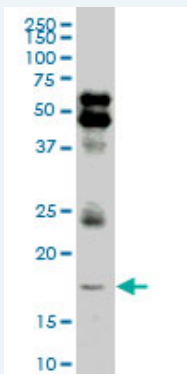
### Application Image

Western Blot (Tissue lysate)



Western Blot (Recombinant protein)


ELISA



LMO2 monoclonal antibody (M05), clone 4D3. Western Blot analysis of LMO2 expression in human spleen.

 [Protocol Download](#)

#### Western Blot (Recombinant protein)

 [Protocol Download](#)

#### ELISA

#### Gene Information

**Entrez GeneID:** [4005](#)

**GeneBank** [NM\\_005574](#)

**Accession#:**

**Protein** [NP\\_005565](#)

**Accession#:**

**Gene Name:** LMO2

**Gene Alias:** RBTN2,RBTN1,RHOM2,TTG2

**Gene** LIM domain only 2 (rhombotin-like 1)

**Description:**

**Omim ID:** [180385](#)

**Gene Ontology:** [Hyperlink](#)

**Gene Summary:** LMO2 encodes a cysteine-rich, two LIM-domain protein that is required for yolk sac erythropoiesis. The LMO2 protein has a central and crucial role in hematopoietic development and is highly conserved. The LMO2 transcription start site is located approximately 25 kb downstream from the 11p13 T-cell translocation cluster (11p13 ttc), where a number T-cell acute lymphoblastic leukemia-specific translocations occur. Alternative splicing results in multiple transcript variants encoding different isoforms

**Other** LIM domain only 2,T-cell translocation gene 2,rhombotin 2,rhombotin-like 1

**Designations:**

#### Related Disease

[Genetic Predisposition to Disease](#) [Hematologic Diseases](#) [Hodgkin Disease](#)  
[Lung Neoplasms](#) [Lymphoma, B-Cell](#) [Lymphoma, Follicular](#)  
[Lymphoma, Large B-Cell, Diffuse](#) [Lymphoproliferative Disorders](#) [Occupational Diseases](#)  
[Pulmonary Disease, Chronic Obstructive](#) [Urinary Bladder Neoplasms](#)  
[Waldenstrom Macroglobulinemia](#) [Werner syndrome](#)

