



SZABO SCANDIC

Part of Europa Biosite

Produktinformation



Forschungsprodukte & Biochemikalien



Zellkultur & Verbrauchsmaterial



Diagnostik & molekulare Diagnostik



Laborgeräte & Service

Weitere Information auf den folgenden Seiten!
See the following pages for more information!



Lieferung & Zahlungsart

siehe unsere [Liefer- und Versandbedingungen](#)

Zuschläge

- Mindermengenzuschlag
- Trockeneiszuschlag
- Gefahrgutzuschlag
- Expressversand

SZABO-SCANDIC HandelsgmbH

Quellenstraße 110, A-1100 Wien

T. +43(0)1 489 3961-0

F. +43(0)1 489 3961-7

mail@szabo-scandic.com

www.szabo-scandic.com

[linkedin.com/company/szaboscandic](https://www.linkedin.com/company/szaboscandic) 

LMX1B monoclonal antibody (M08), clone 1D12

Catalog # : H00004010-M08

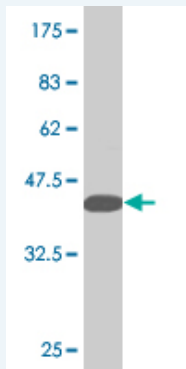
規格 : [100 ug]

[List All](#)

Specification

Product Description:	Mouse monoclonal antibody raised against a partial recombinant LMX1B.
Immunogen:	LMX1B (NP_002307, 1 a.a. ~ 110 a.a) partial recombinant protein with GST tag. MW of the GST tag alone is 26 KDa.
Sequence:	MLDGIKMEEHALRPGPATLGVLLGSDCPHPAVCEGCQRPISDRFLMRVN ESSWHEECLQCAACQQALTTSCYFRDRKLYCKQDYQQLFAAKCSGCM EKIAPTEFVMRALE
Host:	Mouse
Reactivity:	Human
Isotype:	IgG2a Kappa

Quality Control Testing: Antibody Reactive Against Recombinant Protein.



Western Blot detection against Immunogen (37.84 KDa) .

Storage Buffer: In 1x PBS, pH 7.4

Storage Instruction: Store at -20°C or lower. Aliquot to avoid repeated freezing and thawing.

MSDS: [Download](#)

Datasheet: [Download](#)

Applications

Western Blot (Recombinant protein)

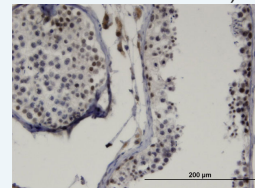
[Protocol Download](#)

Immunohistochemistry (Formalin/PFA-fixed paraffin-embedded sections)

Application Image

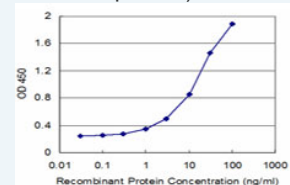
Western Blot (Recombinant protein)

Immunohistochemistry (Formalin/PFA-fixed paraffin-embedded sections)



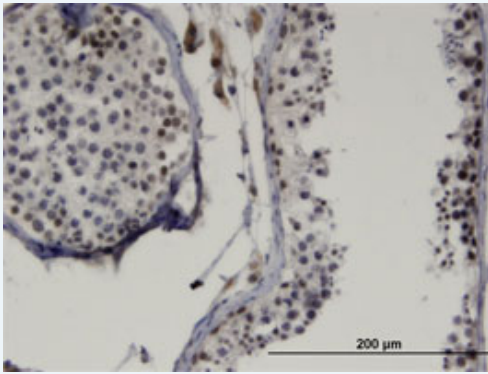
[enlarge](#)

Sandwich ELISA (Recombinant protein)



[enlarge](#)

ELISA

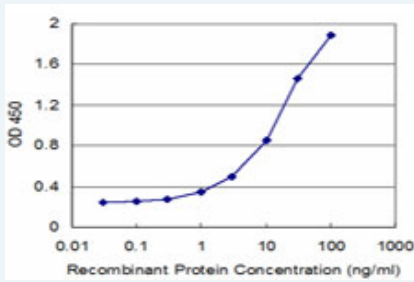


[enlarge this image](#)

Immunoperoxidase of monoclonal antibody to LMX1B on formalin-fixed paraffin-embedded human testis. [antibody concentration 3 ug/ml]

[Protocol Download](#)

Sandwich ELISA (Recombinant protein)



Detection limit for recombinant GST tagged LMX1B is approximately 0.3ng/ml as a capture antibody.

[Protocol Download](#)

ELISA

Gene Information

Entrez GeneID: [4010](#)

GeneBank Accession#: [NM_002316](#)

Protein Accession#: [NP_002307](#)

Gene Name: LMX1B

Gene Alias: LMX1.2,MGC138325,MGC142051,NPS1

Gene Description: LIM homeobox transcription factor 1, beta

Omim ID: [137750](#), [161200](#), [602575](#)

Gene Ontology: [Hyperlink](#)

Other Designations: LIM homeo box transcription factor 1, beta,OTTHUMP00000022153

Related Disease

[Antisocial Personality Disorder](#) [Chromosome Aberrations](#) [Cleft Lip](#) [Cleft Palate](#) [Craniosynostoses](#) [Genetic Diseases, Inborn](#) [Genetic Predisposition to Disease](#) [Glaucoma](#) [Glaucoma, Open-Angle](#) [Ocular Hypertension](#) [Parkinson Disease](#) [Parkinson disease](#) [Schizophrenia](#)

