



# SZABO SCANDIC

Part of Europa Biosite

## Produktinformation



Forschungsprodukte & Biochemikalien



Zellkultur & Verbrauchsmaterial



Diagnostik & molekulare Diagnostik



Laborgeräte & Service

Weitere Information auf den folgenden Seiten!  
See the following pages for more information!



### Lieferung & Zahlungsart

siehe unsere [Liefer- und Versandbedingungen](#)

### Zuschläge

- Mindermengenzuschlag
- Trockeneiszuschlag
- Gefahrgutzuschlag
- Expressversand

### SZABO-SCANDIC HandelsgmbH

Quellenstraße 110, A-1100 Wien

T. +43(0)1 489 3961-0

F. +43(0)1 489 3961-7

[mail@szabo-scandic.com](mailto:mail@szabo-scandic.com)

[www.szabo-scandic.com](http://www.szabo-scandic.com)

[linkedin.com/company/szaboscandic](https://www.linkedin.com/company/szaboscandic) 

## LOR purified MaxPab mouse polyclonal antibody (B01P) MaxPab®

Catalog # : H00004014-B01P

規格 : [ 50 ug ]

[List All](#)

### Specification

**Product Description:** Mouse polyclonal antibody raised against a full-length human LOR protein.

**Immunogen:** LOR (AAH34690.1, 1 a.a. ~ 316 a.a) full-length human protein.

**Sequence:**  
 MSYQKKQPTPQPPVDCVKTSGGGGGGGGGGGGGCGFFGGGGSGG  
 GSSGSGCGYSGGGGYSGGGCGGGSSGGGGGGGGIGCGGGSGGSV  
 KYSGGGSSGGGSGCFSSGGGGSGCFSSGGGGSSGGGSGCFSSGG  
 GGSSGGSGCFSSGGGGFSGQAVQCQSYGGVSSGGSSGGSGCFSS  
 SGGGGSVCGYSGGGSGGGSGCGGGSSGGSGSYVSSQQTQTSC  
 APQPSYGGGSSGGGGSGGSGCFSSGGGGSSGCGGGSSGIGSGCIIS  
 GGGSVCGGGSSGGGGGGSSVGGSGKGVPICHQTQQKQAPTWPS  
 K

**Host:** Mouse

**Reactivity:** Human

**Quality Control Testing:** Antibody reactive against mammalian transfected lysate.

**Storage Buffer:** In 1x PBS, pH 7.4

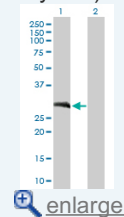
**Storage Instruction:** Store at -20°C or lower. Aliquot to avoid repeated freezing and thawing.

**MSDS:** [Download](#)

**Datasheet:** [Download](#)

### Application Image

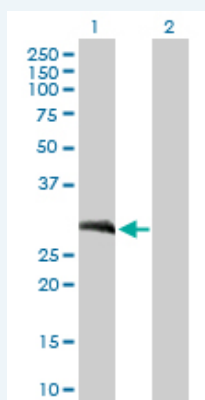
Western Blot (Transfected lysate)



[enlarge](#)

### Applications

Western Blot (Transfected lysate)



Western Blot analysis of LOR expression in transfected 293T cell line (H00004014-T01) by LOR MaxPab polyclonal antibody.

Lane 1: LOR transfected lysate(34.76 KDa).

Lane 2: Non-transfected lysate.

[Protocol Download](#)

## Gene Information

---

**Entrez GeneID:** [4014](#)

---

**GeneBank  
Accession#:** [BC034690.1](#)

---

**Protein  
Accession#:** [AAH34690.1](#)

---

**Gene Name:** LOR

---

**Gene Alias:** MGC111513

---

**Gene  
Description:** loricrin

---

**Omim ID:** [152445](#), [602036](#), [604117](#)

---

**Gene Ontology:** [Hyperlink](#)

---

**Gene Summary:** This gene encodes loricrin, a major protein component of the cornified cell envelope found in terminally differentiated epidermal cells. Mutations in this gene are associated with Vohwinkel's syndrome and progressive symmetric erythrokeratoderma, both inherited skin diseases. [provided by RefSeq]

---

**Other  
Designations:** OTTHUMP00000015823

---

## Related Disease

---

[Cleft Lip](#) [Cleft Palate](#) [Dermatitis](#), [Atopic Genetic Predisposition to Disease](#)

---

[服務條款](#) | [隱私權政策](#) | [著作及商標](#) | [網站地圖](#)

©2016 亞諾法生技股份有限公司 Abnova Corporation. 版權所有.