



SZABO SCANDIC

Part of Europa Biosite

Produktinformation



Forschungsprodukte & Biochemikalien



Zellkultur & Verbrauchsmaterial



Diagnostik & molekulare Diagnostik



Laborgeräte & Service

Weitere Information auf den folgenden Seiten!
See the following pages for more information!



Lieferung & Zahlungsart

siehe unsere [Liefer- und Versandbedingungen](#)

Zuschläge

- Mindermengenzuschlag
- Trockeneiszuschlag
- Gefahrgutzuschlag
- Expressversand

SZABO-SCANDIC HandelsgmbH

Quellenstraße 110, A-1100 Wien

T. +43(0)1 489 3961-0

F. +43(0)1 489 3961-7

mail@szabo-scandic.com

www.szabo-scandic.com

[linkedin.com/company/szaboscandic](https://www.linkedin.com/company/szaboscandic) 

LOXL1 purified MaxPab mouse polyclonal antibody (B01P) MaxPab®

Catalog # : H00004016-B01P

規格 : [50 ug]

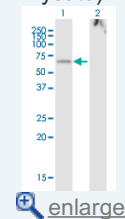
[List All](#)

Specification

| | |
|---------------------------------|--|
| Product Description: | Mouse polyclonal antibody raised against a full-length human LOXL1 protein. |
| Immunogen: | LOXL1 (NP_005567.2, 1 a.a. ~ 574 a.a) full-length human protein. |
| Sequence: | MALARGSRQLGALVWGACLCVLVHGQQAQPGQGSDPARWRQLIQWE NNGQVYLLNSGSEYVPAGPQRSESSSRVLLAGAPQAQRRSHGSPRR RQAPSLPLPGRVGS DTVRGQARHPFGFQQVDPDNWREVAVGDSTGMA RARTSVSQQRHGGSSASSVSASAFASYRQQPSYPQQFPYPQAPFVSQ YENYDPASRTYDQGFVYYRPAGGGVGGAGAAVASAGVIYPYQPRARYE EYGGGEELPEYPPQGFYPAPERPYVPPPPPPDGLDRRYSHSLYSEGT PGFEQAYPDGPEAAQAHGGDPRLGWYPPYANPPPEAYGPPRALEPPY LPVRSSTPPPPGGERNGAQQGRLSVGSVYRPNQNGRGLPDLVDPNY VQASTYVQRAHLYSLRCAAEEKCLASTAYAPEATDYDVRVLLRFPQRVK NQGTA DFLPNRPRHTWEWHSCHQHYSMDEF SHYDLLDAATGKKVAE GHKASFCLEDSTCDFGNLKRYACTSHTQGLSPGCYDTYNADIDCQWIDI TDVQPNGNYLKVHVNPKYIVLESDF TNNVRCNIHYTGRYVSATNCKIVQS |
| Host: | Mouse |
| Reactivity: | Human |
| Quality Control Testing: | Antibody reactive against mammalian transfected lysate. |
| Storage Buffer: | In 1x PBS, pH 7.4 |
| Storage Instruction: | Store at -20°C or lower. Aliquot to avoid repeated freezing and thawing. |
| MSDS: | Download |
| Datasheet: | Download |

Application Image

Western Blot (Transfected lysate)



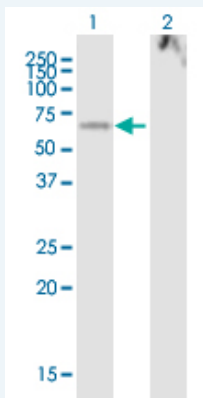
[enlarge](#)

Publication Reference

1. [A common variant mapping to CACNA1A is associated with susceptibility to exfoliation syndrome.](#)
Aung T, Ozaki M, Mizoguchi T, Allingham RR, Li Z, Haripriya A, Nakano S, Uebe S, Harder JM, Chan AS, Lee MC, Burdon KP, Astakhov YS, Abu-Amero KK, Zenteno JC, Nilgun Y, Zarnowski T, Pakravan M, Safieh LA, Jia L, Wang YX, Williams S, Paoli D, Schlotzmann PG, Huang L, Sim KS, Foo JN, Nakano M, Ikeda Y, Kumar RS, Ueno M, Manabe SI, Hayashi K, Kazama S, Ideta R, Mori Y, Miyata K, Sugiyama K, Higashide T, Chihara E, Inoue K, Ishiko S, Yoshida A, Yanagi M, Kiuchi Y, Aihara M, Ohashi T, Sakurai T, SugiNat Genet. 2015 Feb 23. doi: 10.1038/ng.3226.
2. [LOXL1 Deficiency in the Lamina Cribrosa as Candidate Susceptibility Factor for a Pseudoexfoliation-Specific Risk of Glaucoma.](#)
Schlotzer-Schrehardt U, Hammer CM, Krysta AW, Hofmann-Rummelt C, Pasutto F, Sasaki T, Kruse FE, Zenkel M. Ophthalmology. 2012 May 23.

Applications

Western Blot (Transfected lysate)



Western Blot analysis of LOXL1 expression in transfected 293T cell line ([H00004016-T01](#)) by LOXL1 MaxPab polyclonal antibody.

Lane 1: LOXL1 transfected lysate(63.14 KDa).
Lane 2: Non-transfected lysate.

 [Protocol Download](#)

Gene Information

Entrez GeneID: [4016](#)

GeneBank Accession#: [NM_005576.2](#)

Protein Accession#: [NP_005567.2](#)

Gene Name: LOXL1

Gene Alias: LOL,LOXL

Gene Description: lysyl oxidase-like 1

Omim ID: [153456](#), [177650](#)

Gene Ontology: [Hyperlink](#)

Gene Summary: This gene encodes a member of the lysyl oxidase gene family. The prototypic member of the family is essential to the biogenesis of connective tissue, encoding an extracellular copper-dependent amine oxidase that catalyses the first step in the formation of crosslinks in collagens and elastin. A highly conserved amino acid sequence at the C-terminus end appears to be sufficient for amine oxidase activity, suggesting that each family member may retain this function. The N-terminus is poorly conserved and may impart additional roles in developmental regulation, senescence, tumor suppression, cell growth control, and chemotaxis to each member of the family. [provided by RefSeq]

Other Designations: lysyl oxidase homolog 1

Related Disease

[Aneurysm, Dissecting Atherosclerosis Cardiovascular Diseases Cataract Exfoliation Syndrome Fetal Membranes, Premature Rupture Genetic Predisposition to Disease Glaucoma Glaucoma, Angle-Closure Glaucoma, Open-Angle Intracranial Aneurysm Low Tension Glaucoma Pigmentation Disorders Premature Birth Tobacco Use Disorder Ventricular Dysfunction, Left](#)

