



SZABO SCANDIC

Part of Europa Biosite

Produktinformation



Forschungsprodukte & Biochemikalien



Zellkultur & Verbrauchsmaterial



Diagnostik & molekulare Diagnostik



Laborgeräte & Service

Weitere Information auf den folgenden Seiten!
See the following pages for more information!



Lieferung & Zahlungsart

siehe unsere [Liefer- und Versandbedingungen](#)

Zuschläge

- Mindermengenzuschlag
- Trockeneiszuschlag
- Gefahrgutzuschlag
- Expressversand

SZABO-SCANDIC HandelsgmbH

Quellenstraße 110, A-1100 Wien

T. +43(0)1 489 3961-0

F. +43(0)1 489 3961-7

mail@szabo-scandic.com

www.szabo-scandic.com

[linkedin.com/company/szaboscandic](https://www.linkedin.com/company/szaboscandic) 



LOXL1 purified MaxPab rabbit polyclonal antibody (D01P) MaxPab®

Catalog # : H00004016-D01P

規格 : [100 ug]

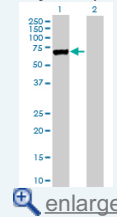
List All

Specification

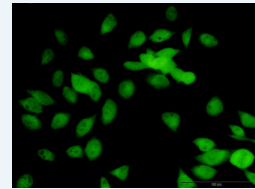
Product Description:	Rabbit polyclonal antibody raised against a full-length human LOXL1 protein.
Immunogen:	LOXL1 (NP_005567.2, 1 a.a. ~ 574 a.a) full-length human protein.
Sequence:	MALARGSRQLGALVWGACLCVLVHGQQAQPGQGSDPARWRQLIQWE NNGQVYLLNSGSEYVPAGPQRSESSRVLLAGAPQAQRRSHGSPRR RQAPSLPLPGRVGS DTVRGQARHPFGFQQVDPNWREVAVGDSTGMA RARTSVSQQRHGGSASSVSASAFASYRQQPSYPQQFPYPQAPFVSQ YENYDPASRTYDQGFVYYRPAAGGGVGGAGAAVASAGVIYPYQPRARYE EYGGGEELPEYPPQGFYPAPERPYVPPPPPPDGLDRRYSHSLYSEGT PGFEQAYPDGPEAAQAHGGDPRLGWYPPYANPPPEAYGPPRALEPPY LPVRSSDTPPPGGERNGAQQGRLSVGSVYRPNQNGRGLPDLVPDPNY VQASTYVQRAHLYSLRCAAEEKCLASTAYAPEATDYDVRVLLRFPQRVK NQGTADFLPNRPRHTWEWHSCHQHYHSMDEF SHYDLLDAATGKKVAE GHKASFCLEDSTCDFGNLKRYACTSHTQGLSPGCYDTYNADIDCQWIDI TDVQPNGNYLKVHVNPKYIVLESDF TNNVRCNIHYTGRYVSATNCKIVQS
Host:	Rabbit
Reactivity:	Human
Quality Control Testing:	Antibody reactive against mammalian transfected lysate.
Storage Buffer:	In 1x PBS, pH 7.4
Storage Instruction:	Store at -20°C or lower. Aliquot to avoid repeated freezing and thawing.
MSDS:	 Download
Datasheet:	 Download

Application Image

Western Blot (Transfected lysate)



Immunofluorescence

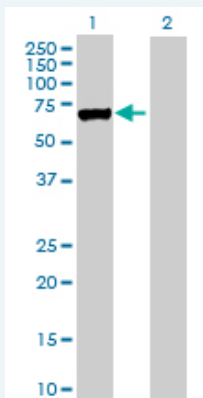


Publication Reference

1. [Gremlin Utilizes Canonical and Non-Canonical TGFβ Signaling to Induce Lysyl Oxidase \(LOX\) Genes in Human Trabecular Meshwork Cells.](#)
Sethi A, Wordinger RJ, Clark AF. *Exp Eye Res.* 2013 Jun 5. pii: S0014-4835(13)00130-9. doi: 10.1016/j.exer.2013.05.011.
2. [Transforming Growth Factor Beta Induces Extracellular Matrix Protein Crosslinking Lysyl Oxidase \(LOX\) Genes in Human Trabecular Meshwork Cells.](#)
Sethi A, Mao W, Wordinger RJ, Clark AF. *Invest Ophthalmol Vis Sci.* 2011 May 5. [Epub ahead of print]

Applications

Western Blot (Transfected lysate)

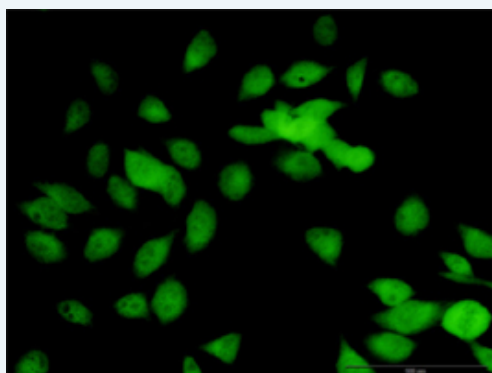


Western Blot analysis of LOXL1 expression in transfected 293T cell line ([H00004016-T01](#)) by LOXL1 MaxPab polyclonal antibody.

Lane 1: LOXL1 transfected lysate(63.10 KDa).
Lane 2: Non-transfected lysate.

[Protocol Download](#)

Immunofluorescence



enlarge this image

Immunofluorescence of purified MaxPab antibody to LOXL1 on HeLa cell. [antibody concentration 10 ug/ml]

[Protocol Download](#)

Gene Information

Entrez GeneID: [4016](#)

GeneBank [NM_005576.2](#)
Accession#:

Protein [NP_005567.2](#)
Accession#:

Gene Name: LOXL1

Gene Alias: LOL,LOXL

Gene lysyl oxidase-like 1
Description:

Omim ID: [153456](#), [177650](#)

Gene Ontology: [Hyperlink](#)

Gene Summary: This gene encodes a member of the lysyl oxidase gene family. The prototypic member of the family is essential to the biogenesis of connective tissue, encoding an extracellular copper-dependent amine oxidase that catalyses the first step in the formation of crosslinks in collagens and elastin. A highly conserved amino acid sequence at the C-terminus end appears to be sufficient for amine oxidase activity, suggesting that each family member may retain this function. The N-terminus is poorly conserved and may impart additional roles in

developmental regulation, senescence, tumor suppression, cell growth control, and chemotaxis to each member of the family. [provided by RefSeq]

Other lysyl oxidase homolog 1
Designations:

Related Disease

[Aneurysm, Dissecting](#) [Atherosclerosis](#) [Cardiovascular Diseases](#) [Cataract](#)
[Exfoliation Syndrome](#) [Fetal Membranes, Premature Rupture](#)
[Genetic Predisposition to Disease](#) [Glaucoma](#) [Glaucoma](#) [Glaucoma, Angle-Closure](#)
[Glaucoma, Open-Angle](#) [Intracranial Aneurysm](#) [Low Tension Glaucoma](#)
[Pigmentation Disorders](#) [Premature Birth](#) [Tobacco Use Disorder](#)
[Ventricular Dysfunction, Left](#)

[服務條款](#) | [隱私權政策](#) | [著作及商標](#) | [網站地圖](#)

©2016 亞諾法生技股份有限公司 Abnova Corporation. 版權所有.