



# SZABO SCANDIC

Part of Europa Biosite

## Produktinformation



Forschungsprodukte & Biochemikalien



Zellkultur & Verbrauchsmaterial



Diagnostik & molekulare Diagnostik



Laborgeräte & Service

Weitere Information auf den folgenden Seiten!  
See the following pages for more information!



### Lieferung & Zahlungsart

siehe unsere [Liefer- und Versandbedingungen](#)

### Zuschläge

- Mindermengenzuschlag
- Trockeneiszuschlag
- Gefahrgutzuschlag
- Expressversand

### SZABO-SCANDIC HandelsgmbH

Quellenstraße 110, A-1100 Wien

T. +43(0)1 489 3961-0

F. +43(0)1 489 3961-7

[mail@szabo-scandic.com](mailto:mail@szabo-scandic.com)

[www.szabo-scandic.com](http://www.szabo-scandic.com)

[linkedin.com/company/szaboscandic](https://www.linkedin.com/company/szaboscandic) 

## LOXL1 293T Cell Transient Overexpression Lysate(Denatured)

Catalog # : H00004016-T01

規格 : [ 100 uL ]

[List All](#)

### Specification

**Transfected Cell Line:** 293T

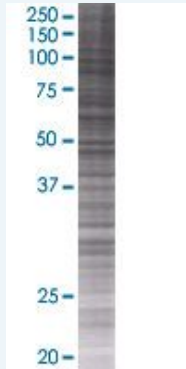
**Plasmid:** pCMV-LOXL1 full-length

**Host:** Human

**Theoretical MW (kDa):** 63.25

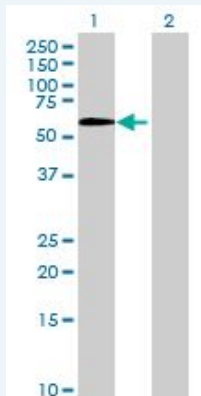
**Quality Control Testing:** Transient overexpression cell lysate was tested with Anti-LOXL1 antibody ([H00004016-B01](#)) by Western Blots.

#### SDS-PAGE Gel



LOXL1 transfected lysate.

#### Western Blot



Lane 1: LOXL1 transfected lysate ( 63.25 KDa)

Lane 2: Non-transfected lysate.

**Storage Buffer:** 1X Sample Buffer (50 mM Tris-HCl, 2% SDS, 10% glycerol, 300 mM 2-mercaptoethanol, 0.01% Bromophenol blue)

**Storage Instruction:** Store at -80°C. Aliquot to avoid repeated freezing and thawing.

**MSDS:**  [Download](#)

### Applications

### Application Image

Western Blot

## Western Blot

### Gene Information

Entrez GeneID: [4016](#)

GeneBank [NM\\_005576.2](#)  
Accession#:

Protein [NP\\_005567.2](#)  
Accession#:

Gene Name: LOXL1

Gene Alias: LOL,LOXL

Gene Description: lysyl oxidase-like 1

Omim ID: [153456](#), [177650](#)

Gene Ontology: [Hyperlink](#)

**Gene Summary:** This gene encodes a member of the lysyl oxidase gene family. The prototypic member of the family is essential to the biogenesis of connective tissue, encoding an extracellular copper-dependent amine oxidase that catalyses the first step in the formation of crosslinks in collagens and elastin. A highly conserved amino acid sequence at the C-terminus end appears to be sufficient for amine oxidase activity, suggesting that each family member may retain this function. The N-terminus is poorly conserved and may impart additional roles in developmental regulation, senescence, tumor suppression, cell growth control, and chemotaxis to each member of the family. [provided by RefSeq]

Other Designations: lysyl oxidase homolog 1

### Related Disease

[Aneurysm, Dissecting Atherosclerosis Cardiovascular Diseases Cataract Exfoliation Syndrome Fetal Membranes, Premature Rupture Genetic Predisposition to Disease Glaucoma Glaucoma Glaucoma, Angle-Closure Glaucoma, Open-Angle Intracranial Aneurysm Low Tension Glaucoma Pigmentation Disorders Premature Birth Tobacco Use Disorder Ventricular Dysfunction, Left](#)

[服務條款](#) | [隱私權政策](#) | [著作及商標](#) | [網站地圖](#)

©2016 亞諾法生技股份有限公司 Abnova Corporation. 版權所有.