



SZABO SCANDIC

Part of Europa Biosite

Produktinformation



Forschungsprodukte & Biochemikalien



Zellkultur & Verbrauchsmaterial



Diagnostik & molekulare Diagnostik



Laborgeräte & Service

Weitere Information auf den folgenden Seiten!
See the following pages for more information!



Lieferung & Zahlungsart

siehe unsere [Liefer- und Versandbedingungen](#)

Zuschläge

- Mindermengenzuschlag
- Trockeneiszuschlag
- Gefahrgutzuschlag
- Expressversand

SZABO-SCANDIC HandelsgmbH

Quellenstraße 110, A-1100 Wien

T. +43(0)1 489 3961-0

F. +43(0)1 489 3961-7

mail@szabo-scandic.com

www.szabo-scandic.com

[linkedin.com/company/szaboscandic](https://www.linkedin.com/company/szaboscandic) 

LOXL2 polyclonal antibody (A01)

Catalog # : H00004017-A01

規格 : [50 uL]

List All

Specification

Product Description: Mouse polyclonal antibody raised against a partial recombinant LOXL2.

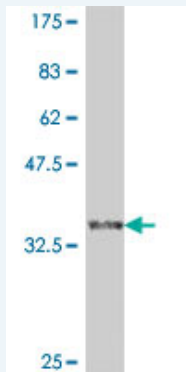
Immunogen: LOXL2 (NP_002309, 675 a.a. ~ 773 a.a) partial recombinant protein with GST tag.

Sequence: NFGDQGITMGCWDMYRHDIDCQWVDITDVPPGDYLFQVWINPNFEVAES
DYSNNIMKCRSRYDGHRIWWMYNCHIGGSFSEETEKKFEHFSGLLNQLSP

Host: Mouse

Reactivity: Human

Quality Control Testing: Antibody Reactive Against Recombinant Protein.



Western Blot detection against Immunogen (37 KDa) .

Storage Buffer: 50 % glycerol

Storage Instruction: Store at -20°C or lower. Aliquot to avoid repeated freezing and thawing.

MSDS: [Download](#)

Datasheet: [Download](#)

Publication Reference

1. [Constitutional Nephrin Deficiency in Conditionally Immortalized Human Podocytes Induced Epithelial-Mesenchymal Transition, Supported by B-Catenin/NF-kappa B Activation: A Consequence of Cell Junction Impairment?](#)
Ghiggeri GM, Gigante M, Donato AD. International Journal of Nephrology, vol. 2013, Article ID 457490, 15 pages, 2013. doi:10.1155/2013/457490

Applications

Western Blot (Recombinant protein)

[Protocol Download](#)

ELISA

Application Image

Western Blot (Recombinant protein)

ELISA

Gene Information

Entrez GeneID: [4017](#)

GeneBank Accession#: [NM_002318](#)

Protein Accession#: [NP_002309](#)

Gene Name: LOXL2

Gene Alias: LOR2,WS9-14

Gene Description: lysyl oxidase-like 2

Omim ID: [606663](#)

Gene Ontology: [Hyperlink](#)

Gene Summary: This gene encodes a member of the lysyl oxidase gene family. The prototypic member of the family is essential to the biogenesis of connective tissue, encoding an extracellular copper-dependent amine oxidase that catalyses the first step in the formation of crosslinks in collagens and elastin. A highly conserved amino acid sequence at the C-terminus end appears to be sufficient for amine oxidase activity, suggesting that each family member may retain this function. The N-terminus is poorly conserved and may impart additional roles in developmental regulation, senescence, tumor suppression, cell growth control, and chemotaxis to each member of the family. [provided by RefSeq]

Other Designations: lysyl oxidase homolog 2, lysyl oxidase related 2

Related Disease

[Genetic Predisposition to Disease Intracranial Aneurysm Long QT Syndrome Long QT syndrome Torsades de Pointes](#)