



SZABO SCANDIC

Part of Europa Biosite

Produktinformation



Forschungsprodukte & Biochemikalien



Zellkultur & Verbrauchsmaterial



Diagnostik & molekulare Diagnostik



Laborgeräte & Service

Weitere Information auf den folgenden Seiten!
See the following pages for more information!



Lieferung & Zahlungsart

siehe unsere [Liefer- und Versandbedingungen](#)

Zuschläge

- Mindermengenzuschlag
- Trockeneiszuschlag
- Gefahrgutzuschlag
- Expressversand

SZABO-SCANDIC HandelsgmbH

Quellenstraße 110, A-1100 Wien

T. +43(0)1 489 3961-0

F. +43(0)1 489 3961-7

mail@szabo-scandic.com

www.szabo-scandic.com

[linkedin.com/company/szaboscandic](https://www.linkedin.com/company/szaboscandic) 

LOXL2 monoclonal antibody (M01), clone 5D2

Catalog # : H00004017-M01

規格 : [100 ug]

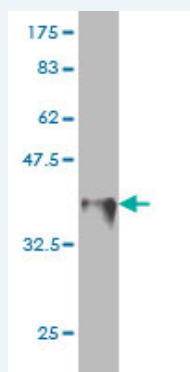
[List All](#)

Specification

Product Description:	Mouse monoclonal antibody raised against a partial recombinant LOXL2.
Immunogen:	LOXL2 (NP_002309, 675 a.a. ~ 773 a.a) partial recombinant protein with GST tag. MW of the GST tag alone is 26 KDa.
Sequence:	NFGDQGITMGCWDMYRHDIDCQWVDITDVPPGDYLFQVWINPNFEVAES DYSNNIMKCRSRYDGHRIWWMYNCHIGGSFSEETEKKFEHFSGLLNQLSP
Host:	Mouse
Reactivity:	Human
Isotype:	IgG2b Kappa

Quality Control Antibody Reactive Against Recombinant Protein.

Testing:



Western Blot detection against Immunogen (36.63 KDa) .

Storage Buffer: In 1x PBS, pH 7.4

Storage Instruction: Store at -20°C or lower. Aliquot to avoid repeated freezing and thawing.

MSDS: [Download](#)

Datasheet: [Download](#)

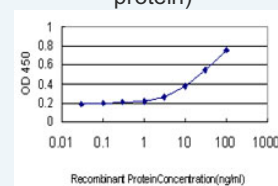
Publication Reference

- [Reduced nuclear and ectopic cytoplasmic expression of lysyl oxidase-like 2 is associated with lymph node metastasis and poor prognosis in esophageal squamous cell carcinoma.](#)
Li TY, Xu LY, Wu ZY, Liao LD, Shen JH, Xu XE, Du ZP, Zhao Q, Li EM. Hum Pathol. 2011 Dec 26.
- [Epithelial-Mesenchymal Transition Induced by Hepatitis C Virus Core Protein in Cholangiocarcinoma.](#)
Li T, Li D, Cheng L, Wu H, Gao Z, Liu Z, Jiang W, Gao YH, Tian F, Zhao L, Wang S. Ann Surg Oncol. 2010 Feb 17. [Epub ahead of print]
- [Reciprocal regulation of LOX and LOXL2 expression during cell adhesion and terminal](#)

Application Image

Western Blot (Recombinant protein)

Sandwich ELISA (Recombinant protein)



[enlarge](#)

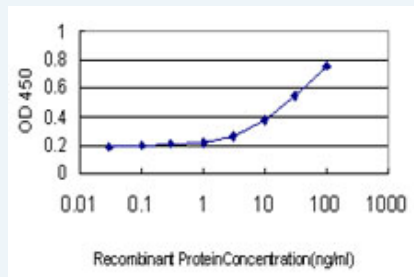
ELISA

Applications

Western Blot (Recombinant protein)

 [Protocol Download](#)

Sandwich ELISA (Recombinant protein)



Detection limit for recombinant GST tagged LOXL2 is approximately 0.3ng/ml as a capture antibody.

 [Protocol Download](#)

ELISA

Gene Information

Entrez GeneID: [4017](#)

GeneBank [NM_002318](#)

Accession#:

Protein [NP_002309](#)

Accession#:

Gene Name: LOXL2

Gene Alias: LOR2,WS9-14

Gene lysyl oxidase-like 2

Description:

Omim ID: [606663](#)

Gene Ontology: [Hyperlink](#)

Gene Summary: This gene encodes a member of the lysyl oxidase gene family. The prototypic member of the family is essential to the biogenesis of connective tissue, encoding an extracellular copper-dependent amine oxidase that catalyses the first step in the formation of crosslinks in collagens and elastin. A highly conserved amino acid sequence at the C-terminus end appears to be sufficient for amine oxidase activity, suggesting that each family member may retain this function. The N-terminus is poorly conserved and may impart additional roles in developmental regulation, senescence, tumor suppression, cell growth control, and chemotaxis to each member of the family. [provided by RefSeq]

Other lysyl oxidase homolog 2,lysyl oxidase related 2

Designations:

Related Disease

[Genetic Predisposition to Disease Intracranial Aneurysm Long QT Syndrome](#)
[Long QT syndrome Torsades de Pointes](#)

