



SZABO SCANDIC

Part of Europa Biosite

Produktinformation



Forschungsprodukte & Biochemikalien



Zellkultur & Verbrauchsmaterial



Diagnostik & molekulare Diagnostik



Laborgeräte & Service

Weitere Information auf den folgenden Seiten!
See the following pages for more information!



Lieferung & Zahlungsart

siehe unsere [Liefer- und Versandbedingungen](#)

Zuschläge

- Mindermengenzuschlag
- Trockeneiszuschlag
- Gefahrgutzuschlag
- Expressversand

SZABO-SCANDIC HandelsgmbH

Quellenstraße 110, A-1100 Wien

T. +43(0)1 489 3961-0

F. +43(0)1 489 3961-7

mail@szabo-scandic.com

www.szabo-scandic.com

[linkedin.com/company/szaboscandic](https://www.linkedin.com/company/szaboscandic) 



LPL purified MaxPab mouse polyclonal antibody (B01P) MaxPab®

Catalog # : H00004023-B01P

規格 : [50 ug]

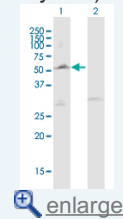
[List All](#)


Specification

Product Description:	Mouse polyclonal antibody raised against a full-length human LPL protein.
Immunogen:	LPL (NP_000228.1, 1 a.a. ~ 475 a.a) full-length human protein.
Sequence:	MESKALLVLT LAVWLQSLTASRGGVAAADQRRDFIDIESKFALRTPEDTA EDTCHLIPGVAESVATCFNHSSKTFMVIHGWTVTGMYESWVPKLVAAL YKREPDSNVIVDWLSRAQEHYPVSAGYTKLVGQDVARFINWMEEFNY PLDNVHLLGYSLGAHAAGIAGSLTNKKVNRITGLDPAGPNFEYAEAPSRL SPDDADFVDVLHTFTRGSPGRSIGIQKPVGHVDIYPNGGTFQPGCNIGEA IRVIAERGLGDVDQLVKCSHERSIHLFIDSLNNEENPSKAYRCSSKEAFEK GLCLSCRKNRCNNLGYEINKVRAKRSSKMYLKTRSQMPYKVFHYQVKIHF SGTESEHTNQAFEISLYGTVAESENIPFTLPEVSTNKTYSFLLIYTEVDIGE LLMLKWKWSDSYFSDSDWWSSPGFAIQKIRVKAGETQKKVIFCSREKV SHLQKKGKAPAVFVKCHDKSLNKKSG
Host:	Mouse
Reactivity:	Human
Quality Control Testing:	Antibody reactive against mammalian transfected lysate.
Storage Buffer:	In 1x PBS, pH 7.4
Storage Instruction:	Store at -20°C or lower. Aliquot to avoid repeated freezing and thawing.
MSDS:	 Download
Datasheet:	 Download

Application Image

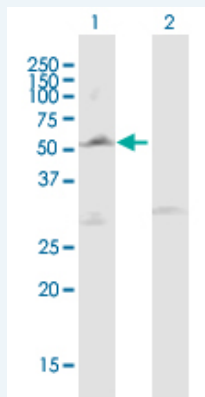
Western Blot (Transfected lysate)



 enlarge

Applications

Western Blot (Transfected lysate)



Western Blot analysis of LPL expression in transfected 293T cell line ([H00004023-T01](#)) by LPL MaxPab polyclonal antibody.

Lane 1: LPL transfected lysate(52.25 KDa).
Lane 2: Non-transfected lysate.

Gene Information

Entrez GeneID: [4023](#)

**GeneBank
Accession#:** [NM_000237.1](#)

**Protein
Accession#:** [NP_000228.1](#)

Gene Name: LPL

Gene Alias: HDLCQ11,LIPD

**Gene
Description:** lipoprotein lipase

Omim ID: [144250](#), [238600](#), [609708](#)

Gene Ontology: [Hyperlink](#)

Gene Summary: LPL encodes lipoprotein lipase, which is expressed in heart, muscle, and adipose tissue. LPL functions as a homodimer, and has the dual functions of triglyceride hydrolase and ligand/bridging factor for receptor-mediated lipoprotein uptake. Severe mutations that cause LPL deficiency result in type I hyperlipoproteinemia, while less extreme mutations in LPL are linked to many disorders of lipoprotein metabolism. [provided by RefSeq]

**Other
Designations:** -

Gene Pathway

[Alzheimer's disease](#) [Glycerolipid metabolism](#) [PPAR signaling pathway](#)

Related Disease

[Albuminuria](#) [Alzheimer Disease](#) [Alzheimer disease](#) [Amyotrophic Lateral Sclerosis](#)
[Amyotrophic lateral sclerosis](#) [Angina Pectoris](#) [Angina, Unstable](#) [Arteriosclerosis](#)
[Atherosclerosis](#) [Atherosclerosis](#) [Birth Weight](#) [Body Weight](#) [Brain Ischemia](#) [Breast cancer](#)
[Breast Diseases](#) [Breast Neoplasms](#) [Calcinosis](#) [Cardiovascular Diseases](#)
[Carotid Artery Diseases](#)

... see more