



SZABO SCANDIC

Part of Europa Biosite

Produktinformation



Forschungsprodukte & Biochemikalien



Zellkultur & Verbrauchsmaterial



Diagnostik & molekulare Diagnostik



Laborgeräte & Service

Weitere Information auf den folgenden Seiten!
See the following pages for more information!



Lieferung & Zahlungsart

siehe unsere [Liefer- und Versandbedingungen](#)

Zuschläge

- Mindermengenzuschlag
- Trockeneiszuschlag
- Gefahrgutzuschlag
- Expressversand

SZABO-SCANDIC HandelsgmbH

Quellenstraße 110, A-1100 Wien

T. +43(0)1 489 3961-0

F. +43(0)1 489 3961-7

mail@szabo-scandic.com

www.szabo-scandic.com

[linkedin.com/company/szaboscandic](https://www.linkedin.com/company/szaboscandic) 

LPL (Human) IP-WB Antibody Pair

Catalog # : H00004023-PW1

規格 : [1 Set]

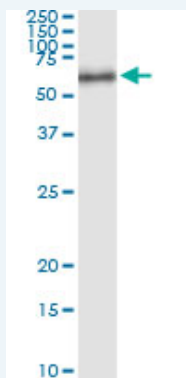
[List All](#)

Specification

Product Description: This IP-WB antibody pair set comes with one antibody for immunoprecipitation and another to detect the precipitated protein in western blot.

Reactivity: Human

Quality Control Testing: Immunoprecipitation-Western Blot (IP-WB)



Immunoprecipitation of LPL transfected lysate using rabbit polyclonal anti-LPL and Protein A Magnetic Bead ([U0007](#)), and immunoblotted with mouse purified polyclonal anti-LPL.

Supplied Product: Antibody pair set content:
 1. Antibody pair for IP: rabbit polyclonal anti-LPL (300 ul)
 2. Antibody pair for WB: mouse purified polyclonal anti-LPL (50 ug)

Storage Instruction: Store reagents of the antibody pair set at -20°C or lower. Please aliquot to avoid repeated freeze thaw cycle. Reagents should be returned to -20°C storage immediately after use.

MSDS:  [Download](#)

Applications

Immunoprecipitation-Western Blot

 [Protocol Download](#)

Gene Information

Entrez GeneID: [4023](#)

Gene Name: LPL

Gene Alias: HDLCQ11, LIPD

Gene Description: lipoprotein lipase

Omim ID: [144250](#), [238600](#), [609708](#)

Gene Ontology: [Hyperlink](#)

Application Image

Immunoprecipitation-Western Blot

Gene Summary: LPL encodes lipoprotein lipase, which is expressed in heart, muscle, and adipose tissue. LPL functions as a homodimer, and has the dual functions of triglyceride hydrolase and ligand/bridging factor for receptor-mediated lipoprotein uptake. Severe mutations that cause LPL deficiency result in type I hyperlipoproteinemia, while less extreme mutations in LPL are linked to many disorders of lipoprotein metabolism. [provided by RefSeq]

Other Designations: -

Gene Pathway

[Alzheimer's disease](#) [Glycerolipid metabolism](#) [PPAR signaling pathway](#)

Related Disease

[Albuminuria](#) [Alzheimer Disease](#) [Alzheimer disease](#) [Amyotrophic Lateral Sclerosis](#) [Amyotrophic lateral sclerosis](#) [Angina Pectoris](#) [Angina, Unstable](#) [Arteriosclerosis](#) [Atherosclerosis](#) [Atherosclerosis](#) [Birth Weight](#) [Body Weight](#) [Brain Ischemia](#) [Breast cancer](#) [Breast Diseases](#) [Breast Neoplasms](#) [Calcinosis](#) [Cardiovascular Diseases](#) [Carotid Artery Diseases](#)

... see more

[服務條款](#) | [隱私權政策](#) | [著作及商標](#) | [網站地圖](#)

©2016 亞諾法生技股份有限公司 Abnova Corporation. 版權所有.